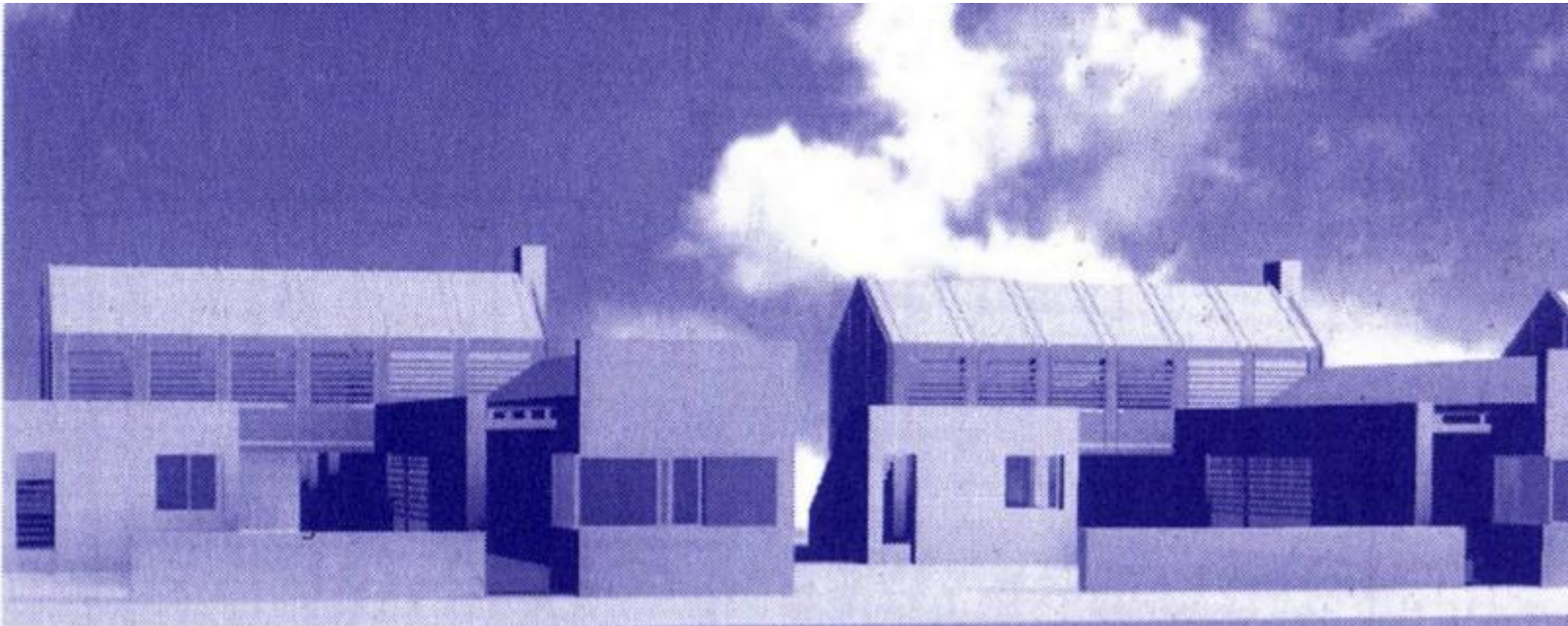
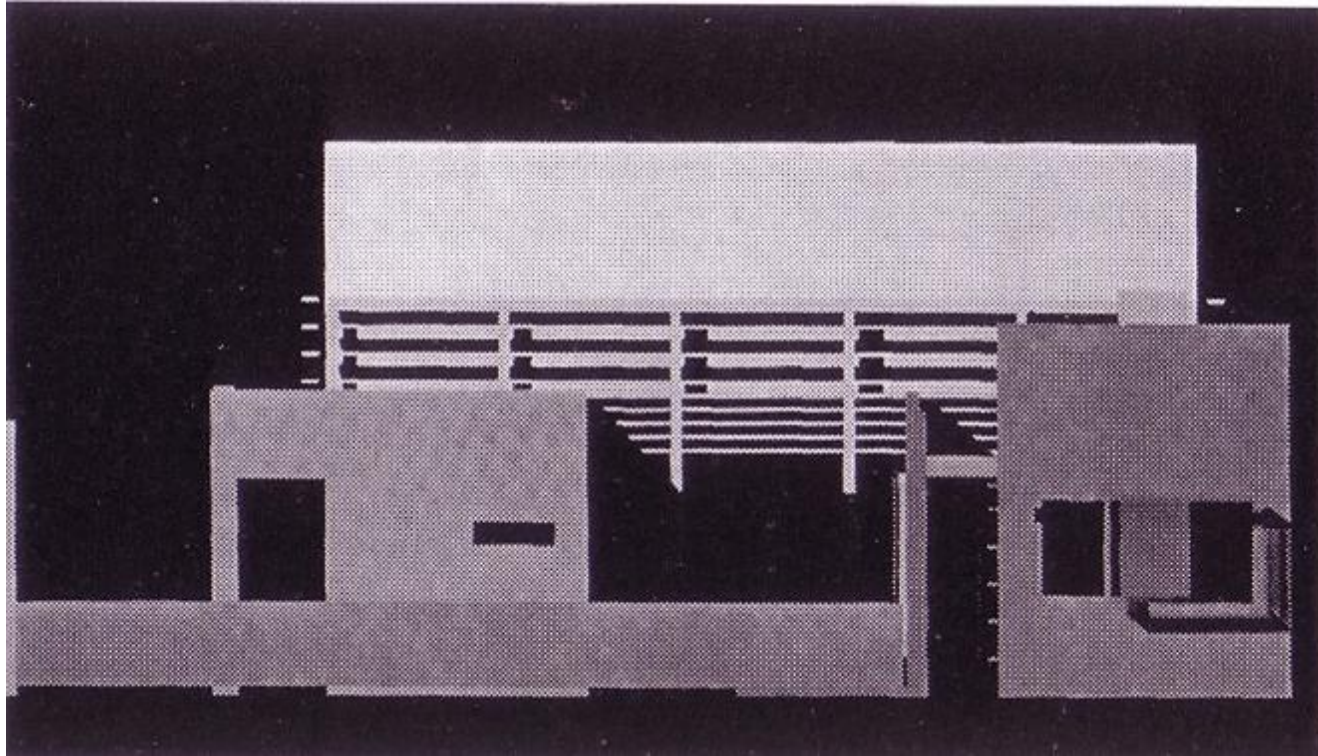


Domaćinska kuća-konkurs

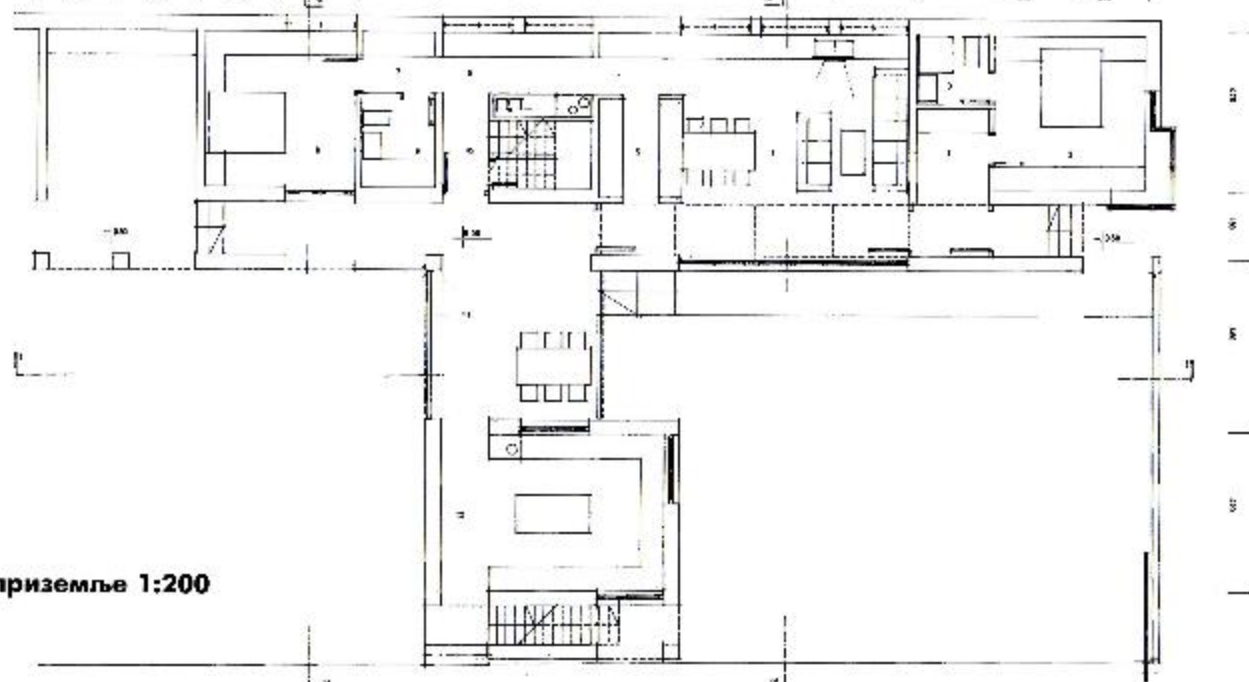


равничарска војвођанска

 спрат 1:200

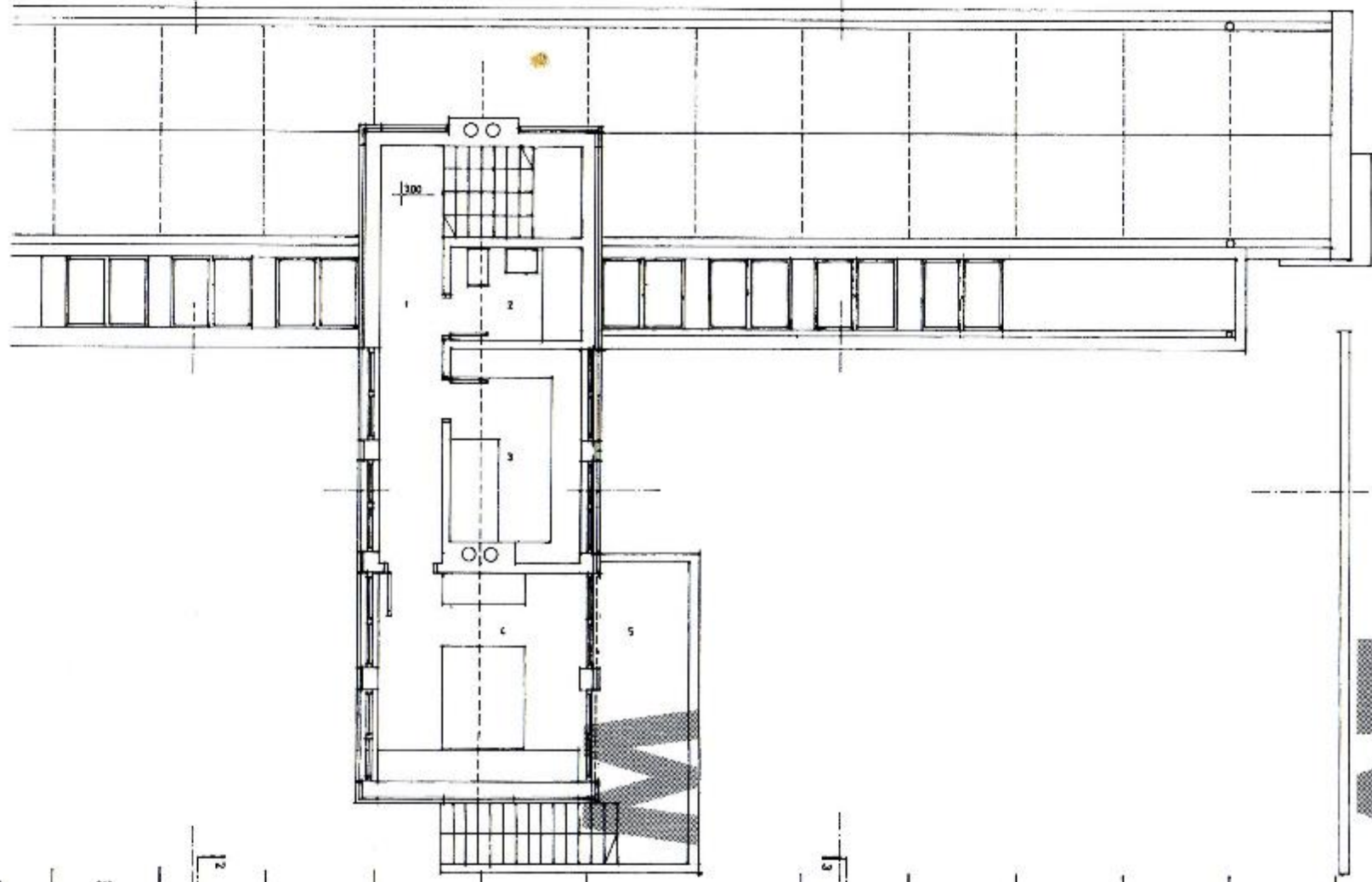


приземље 1:200



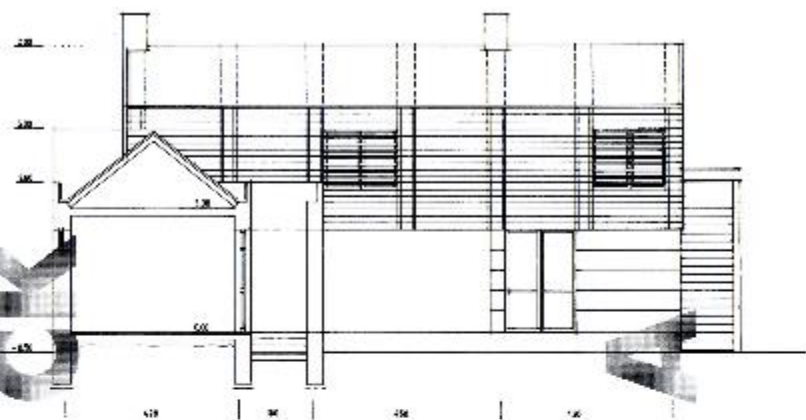
равничарска | војвођанска

210 210

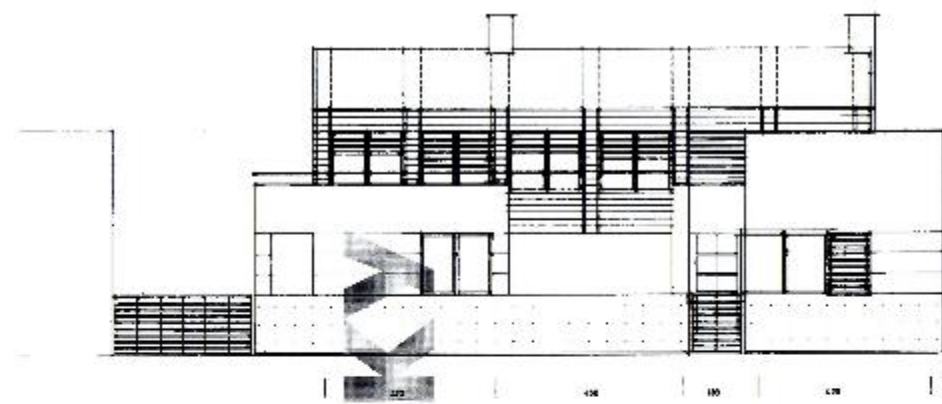


ДО

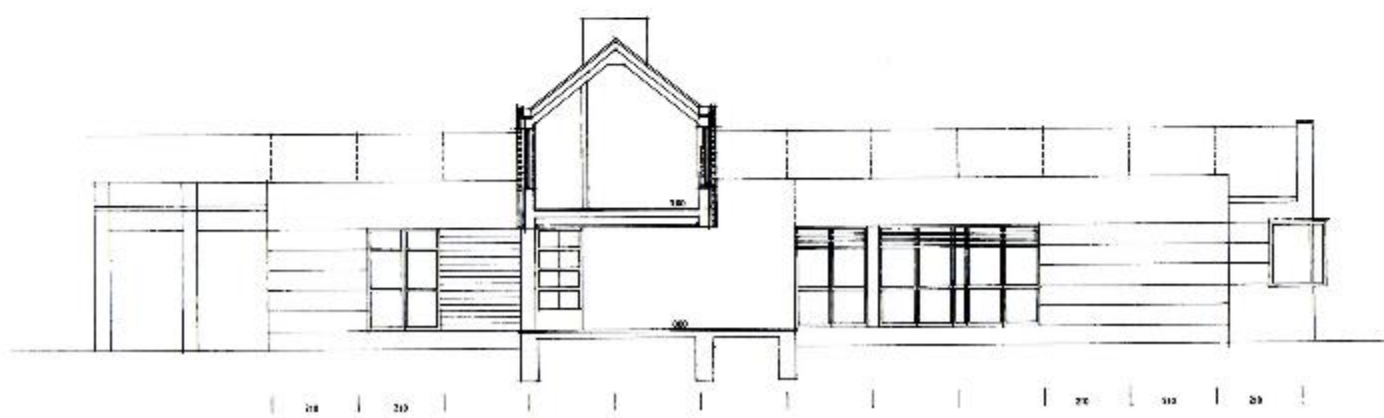
спрат 1:200



пресек 3-3/изглед из дворишта 1:200

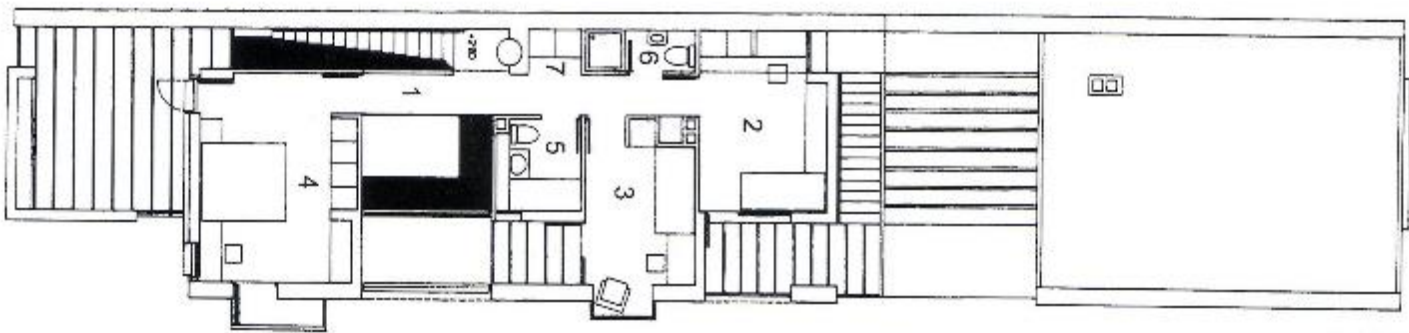
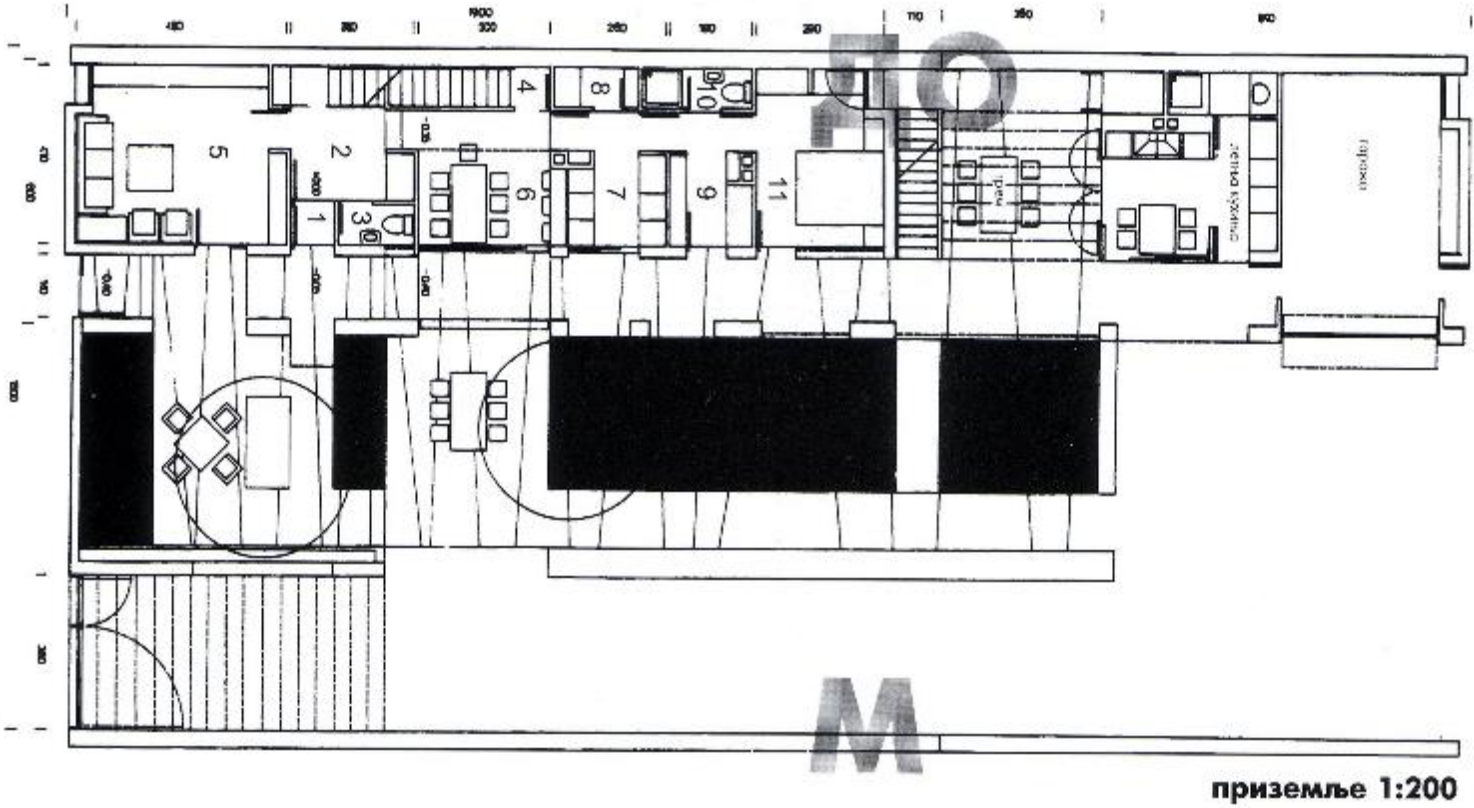


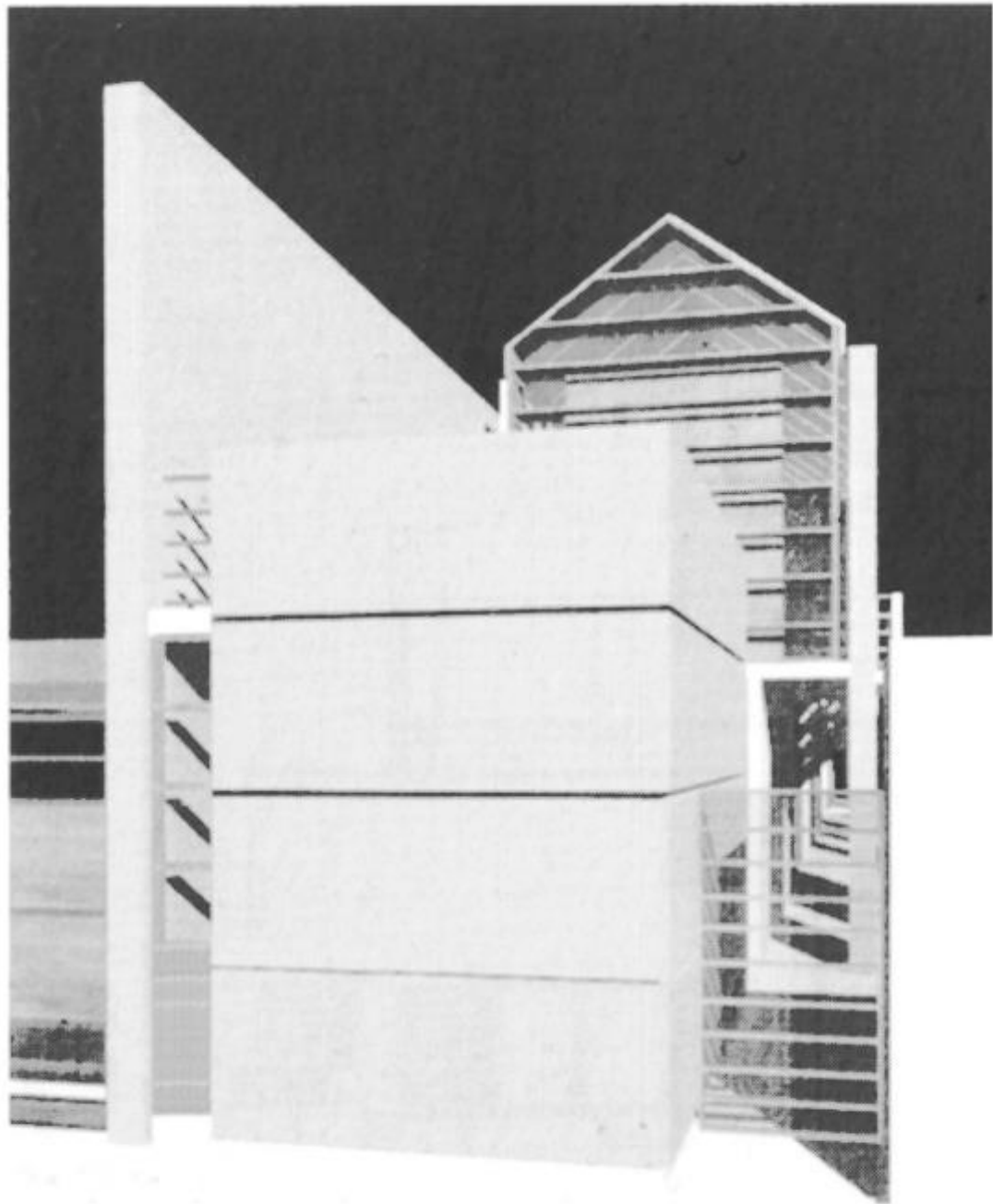
улични изглед 1:200

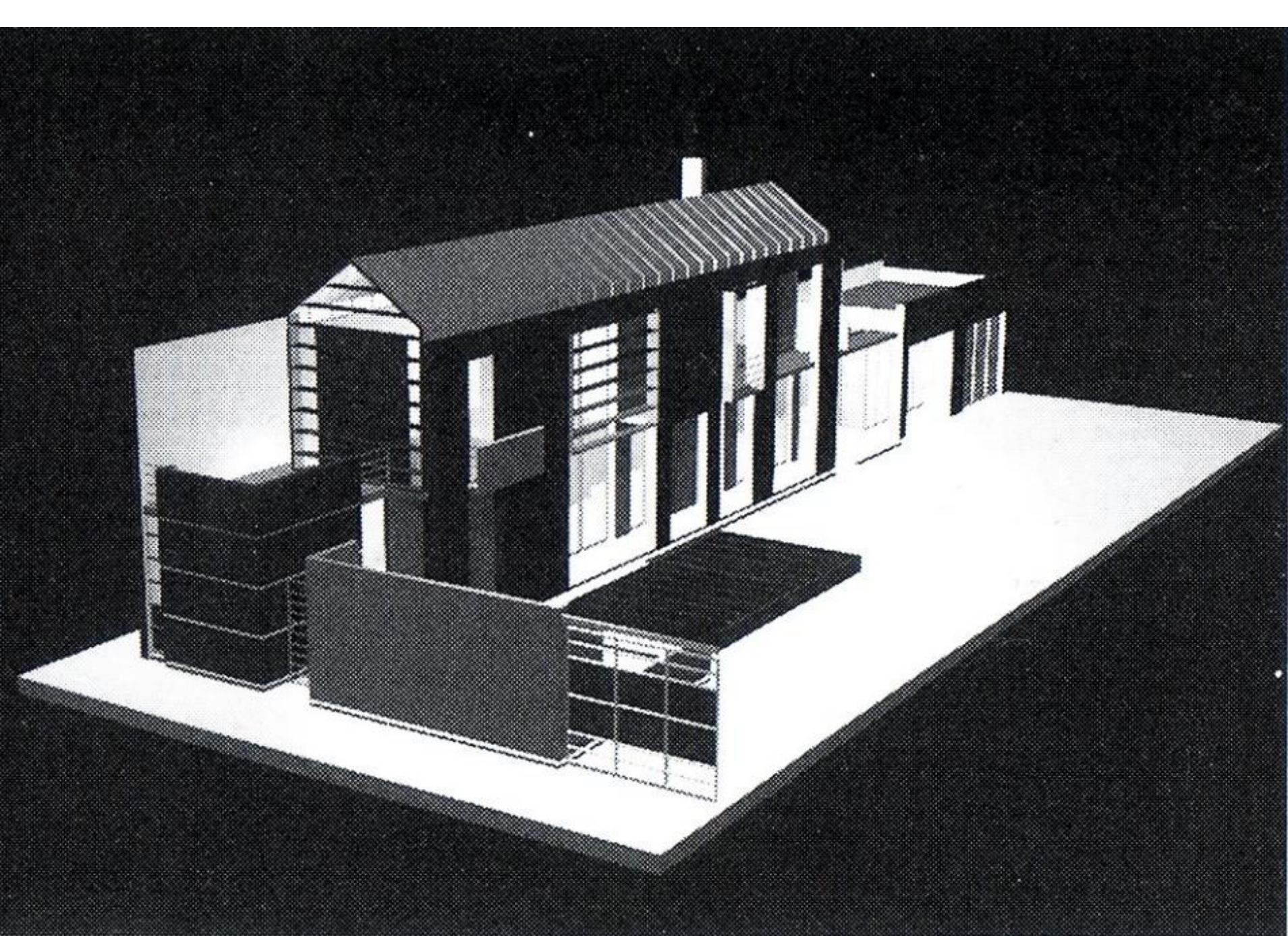


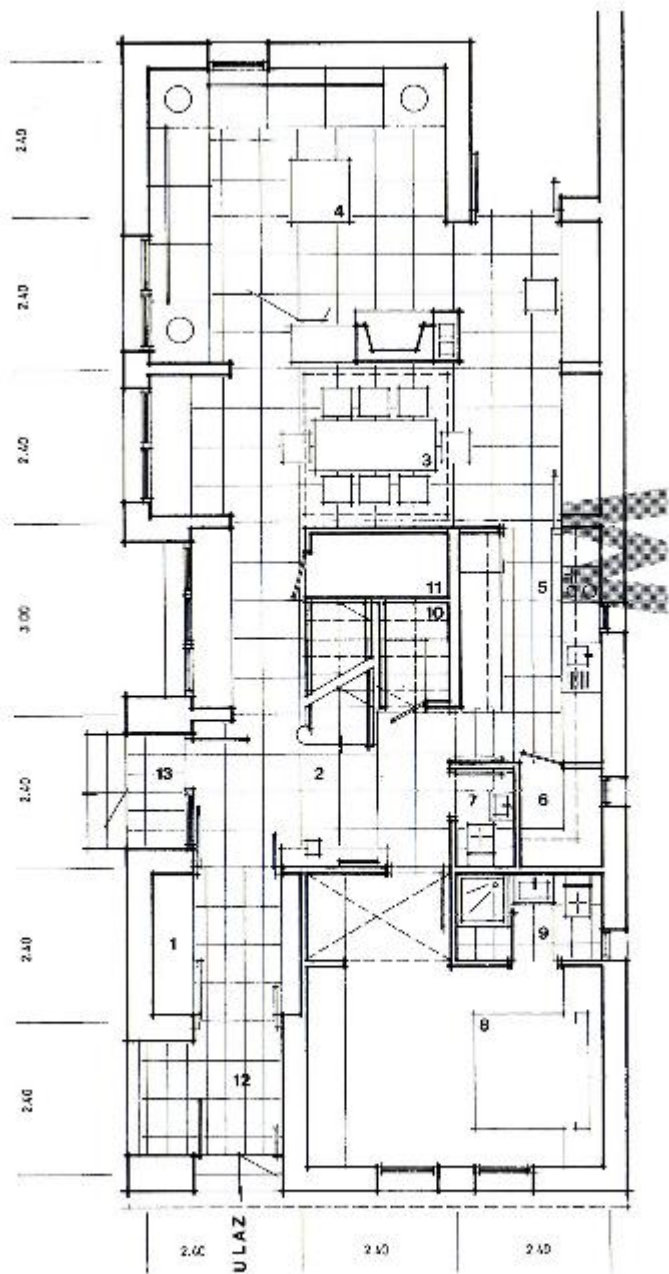
пресек 1-1 1:200

равничарска – војвођанска кућа

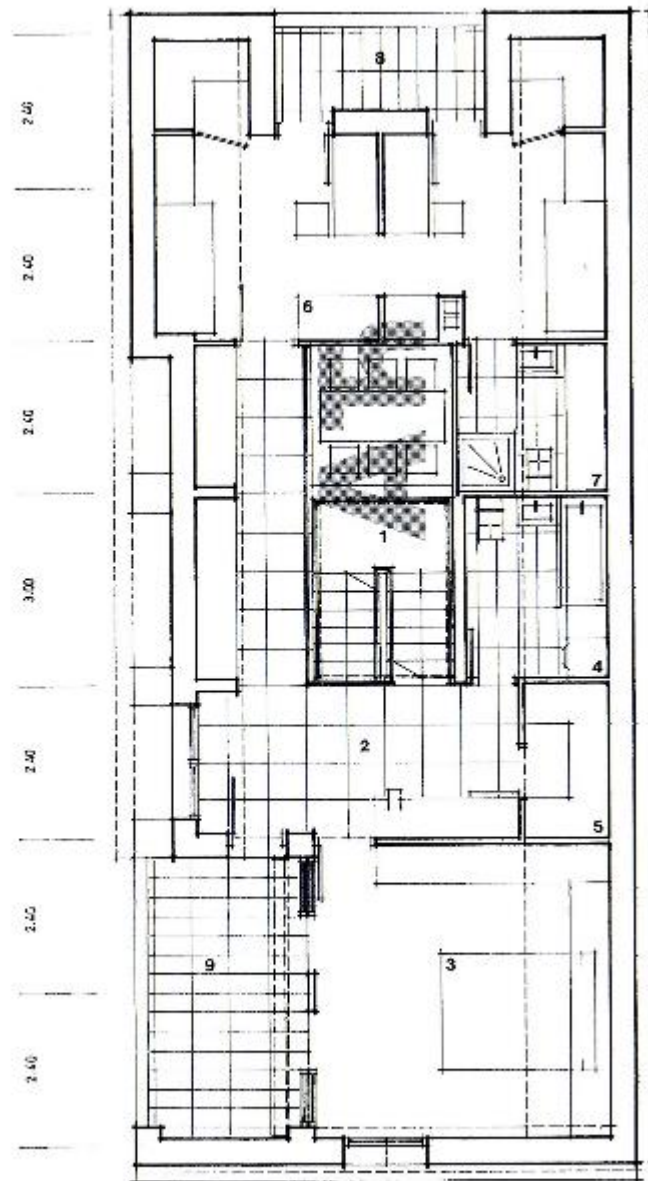




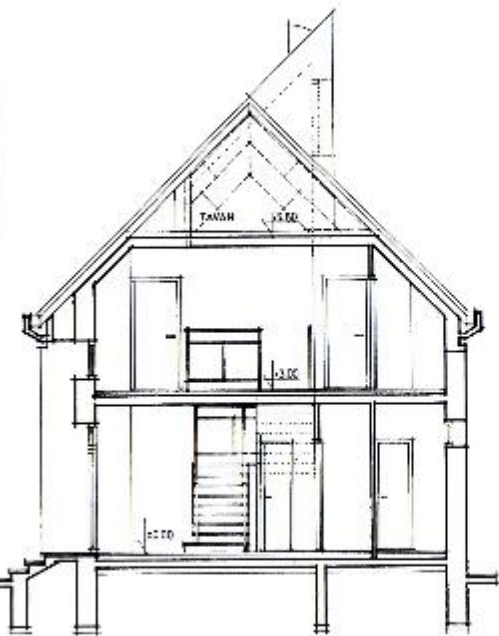




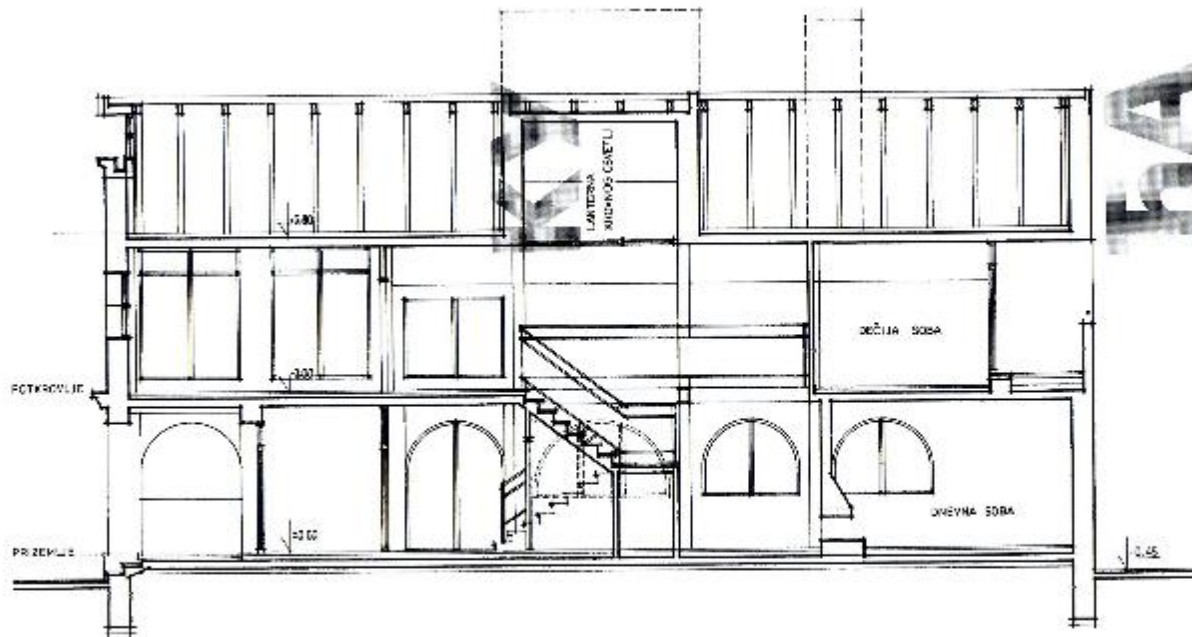
приземље 1:150



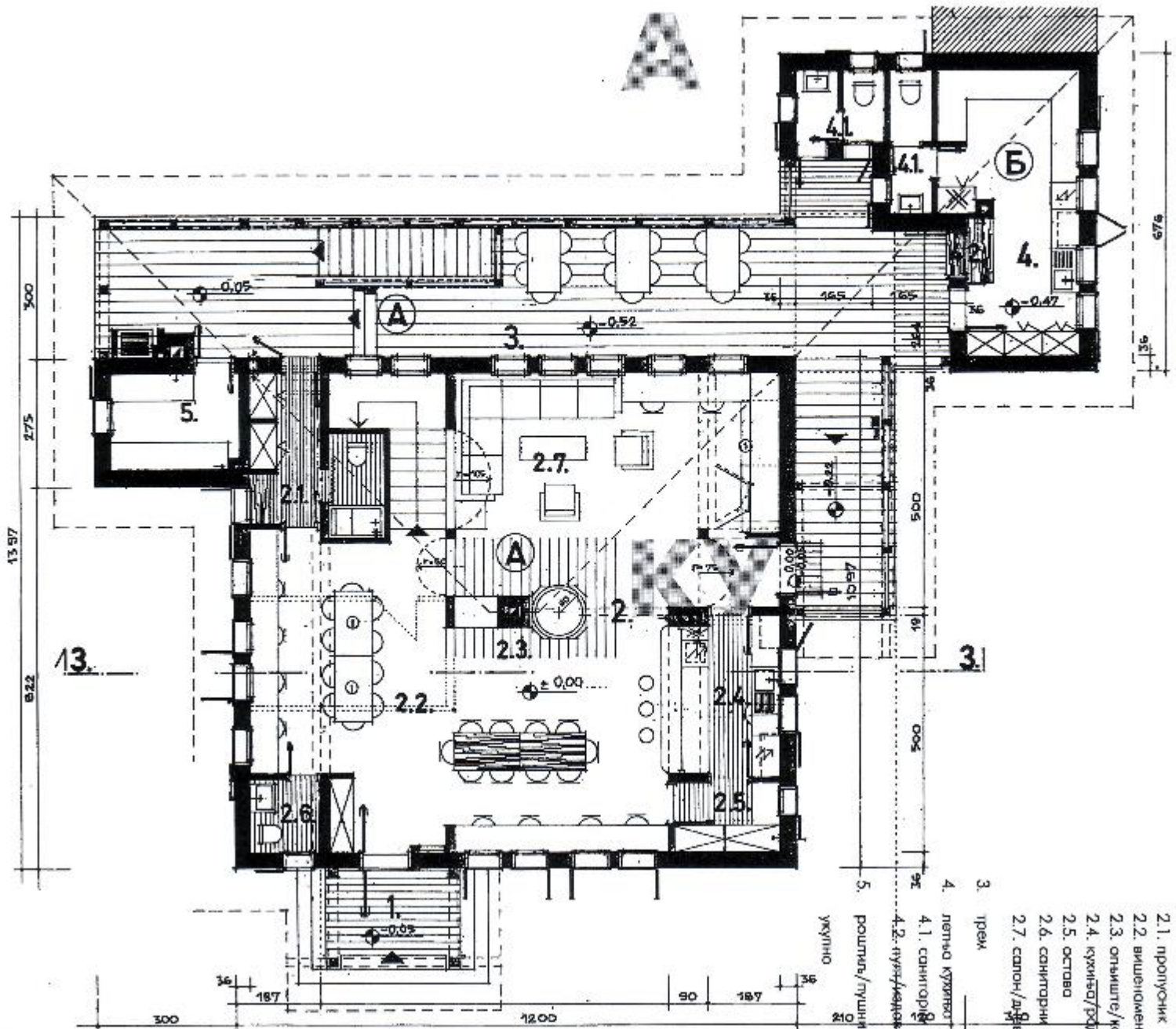
поткровље 1:150



попречни пресек 1:150



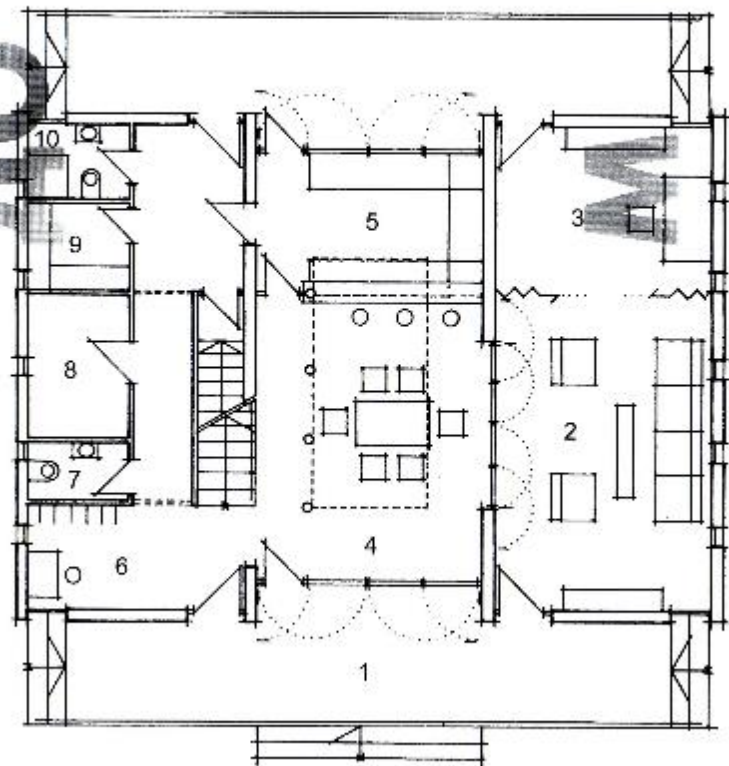
подужни пресек 1:150



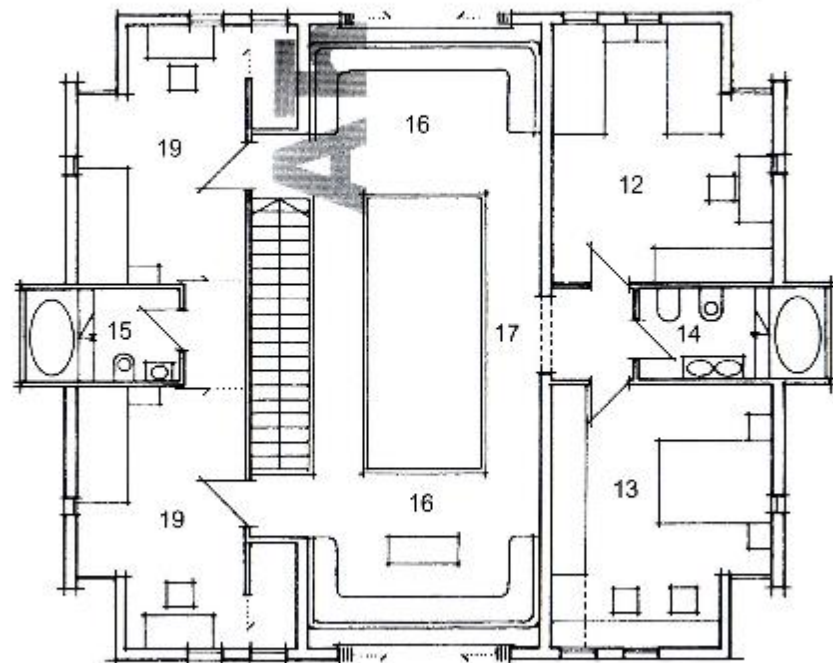
приземље

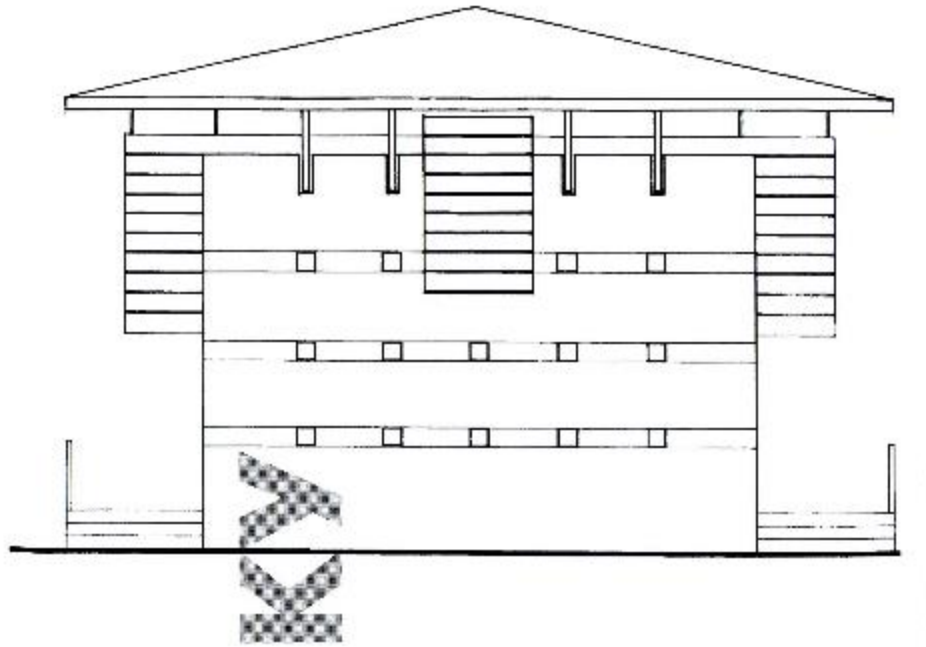
1. улазни трем
2. дн. бордовак/угол
 2.1. пролунок
 2.2. вишенденск
 2.3. опашите/ком
 2.4. кухиња/родик
 2.5. остава
 2.6. санитарни чв
 2.7. салон/дворник
3. трем
4. летња кухиња
 4.1. санитарни чв
 4.2. туалет/кадаван
5. роштил/пушница
 укупно

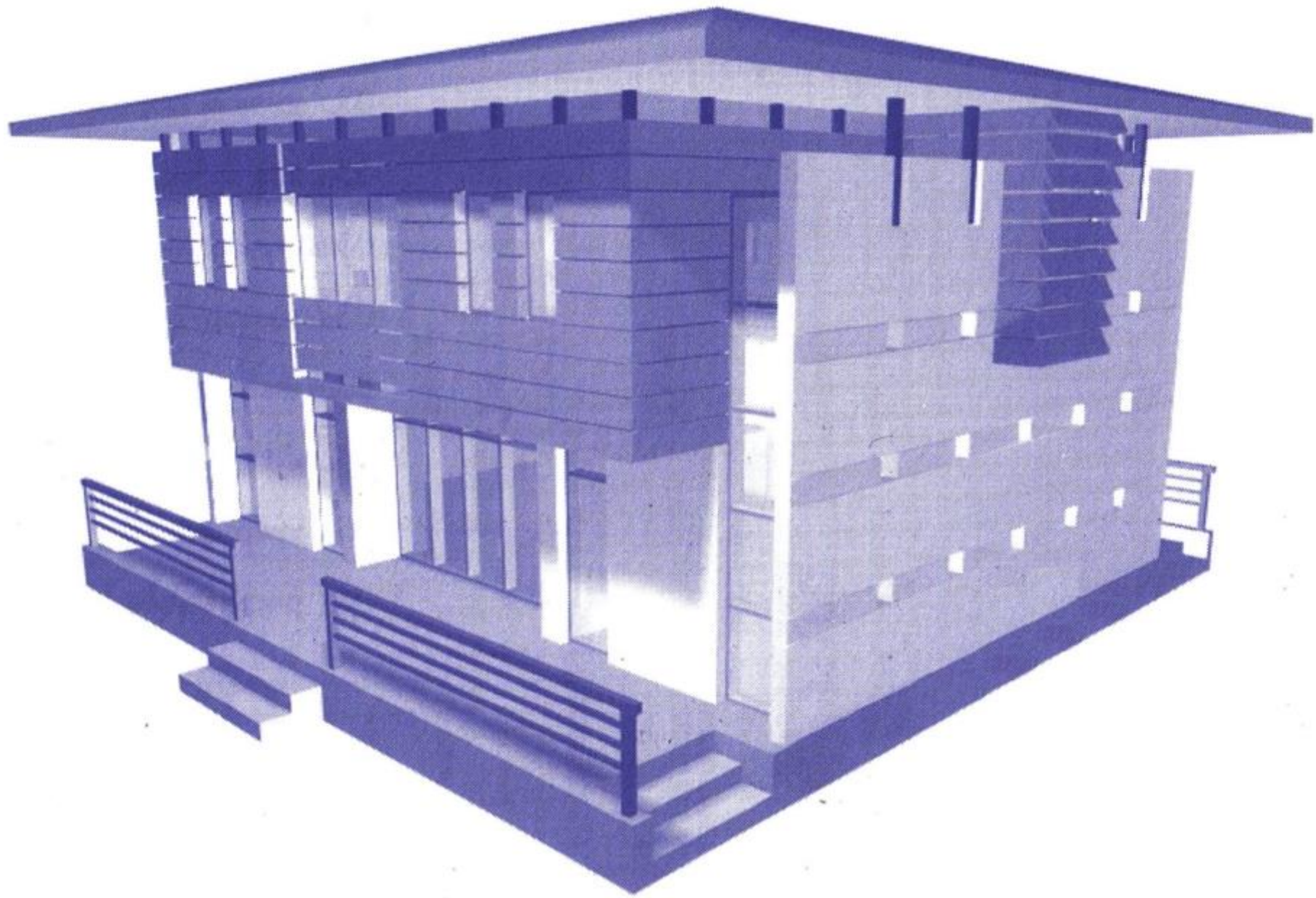
приземље 1:150

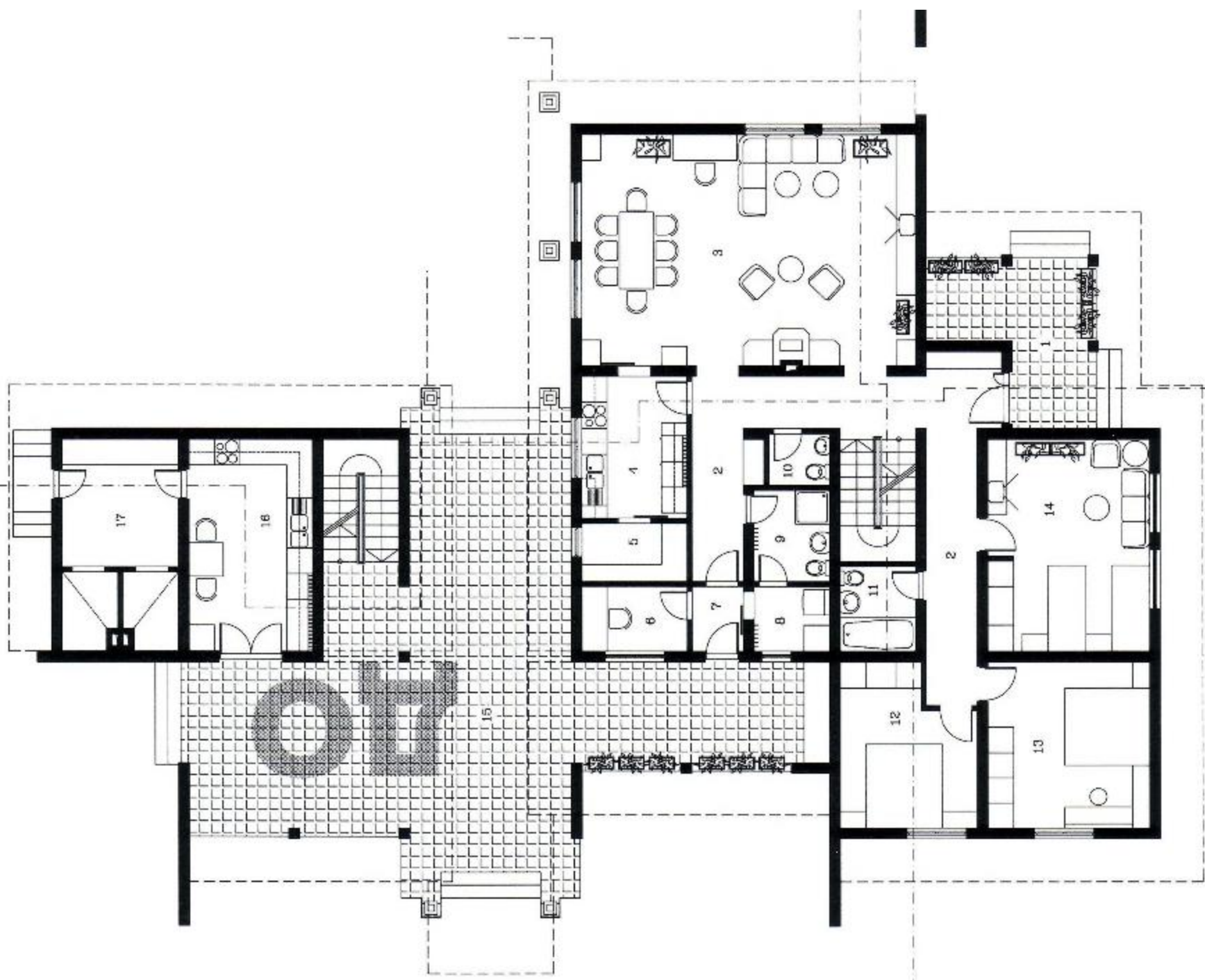


спрат 1:150









приземље 1:200

1:200

210

210

210

210

210

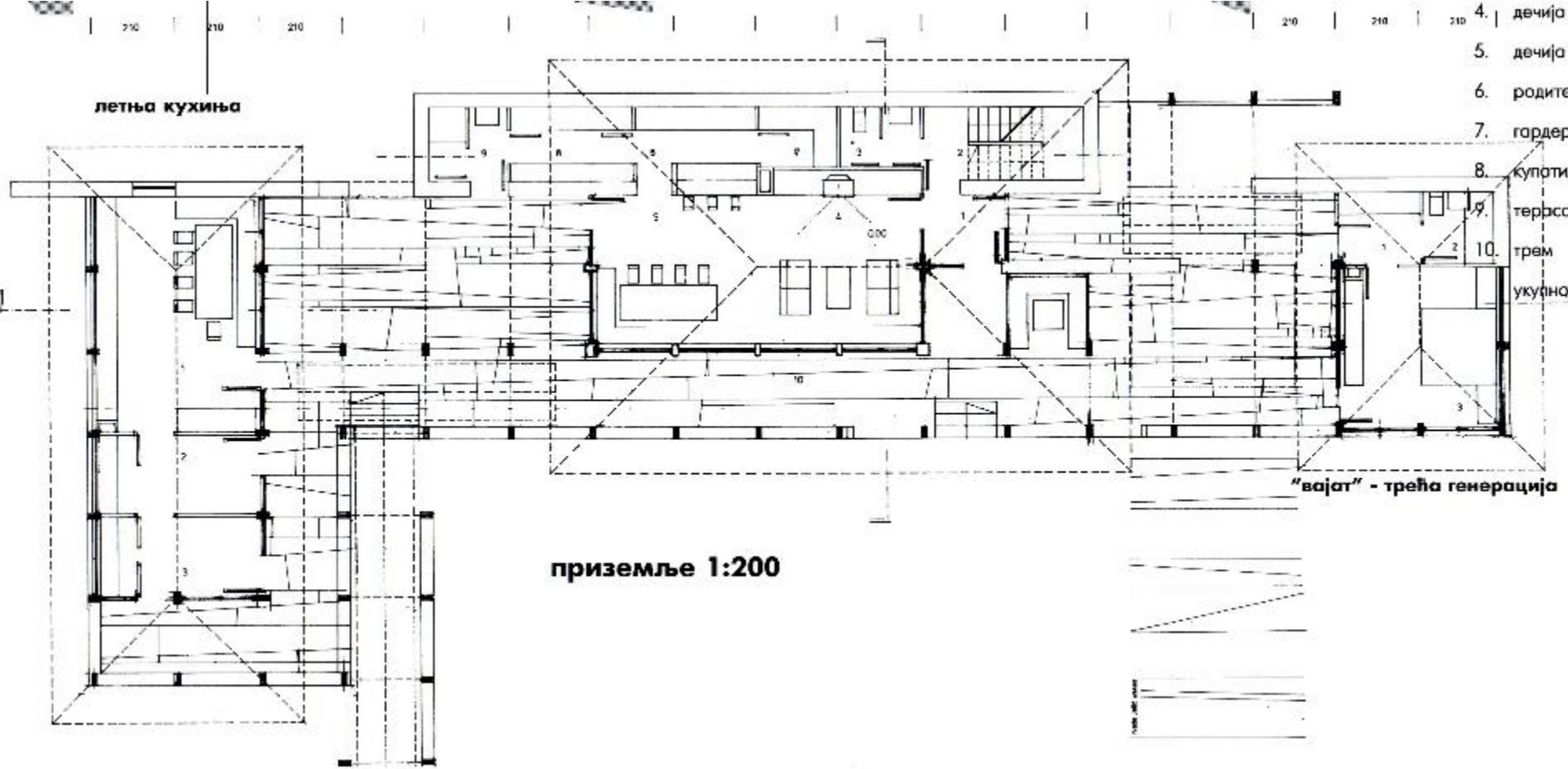
210

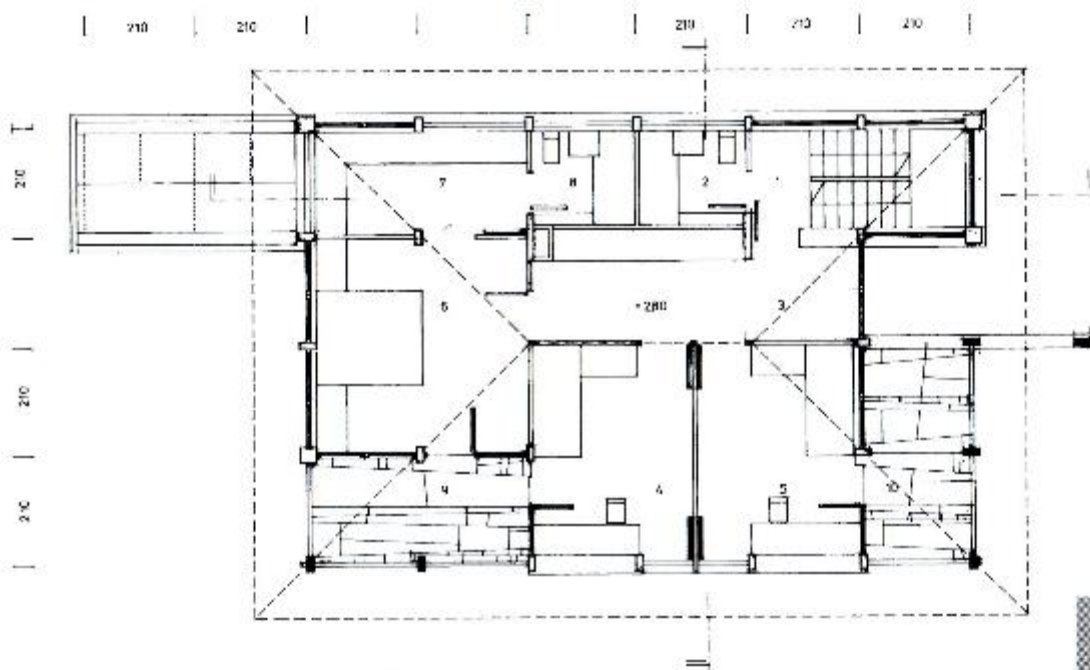
летња кухиња

приземље 1:200

- 4. дечија сп
 - 5. дечија сп
 - 6. родитељ
 - 7. гардероб
 - 8. купатило
 - 9. тераса
 - 10. трем
- укупно

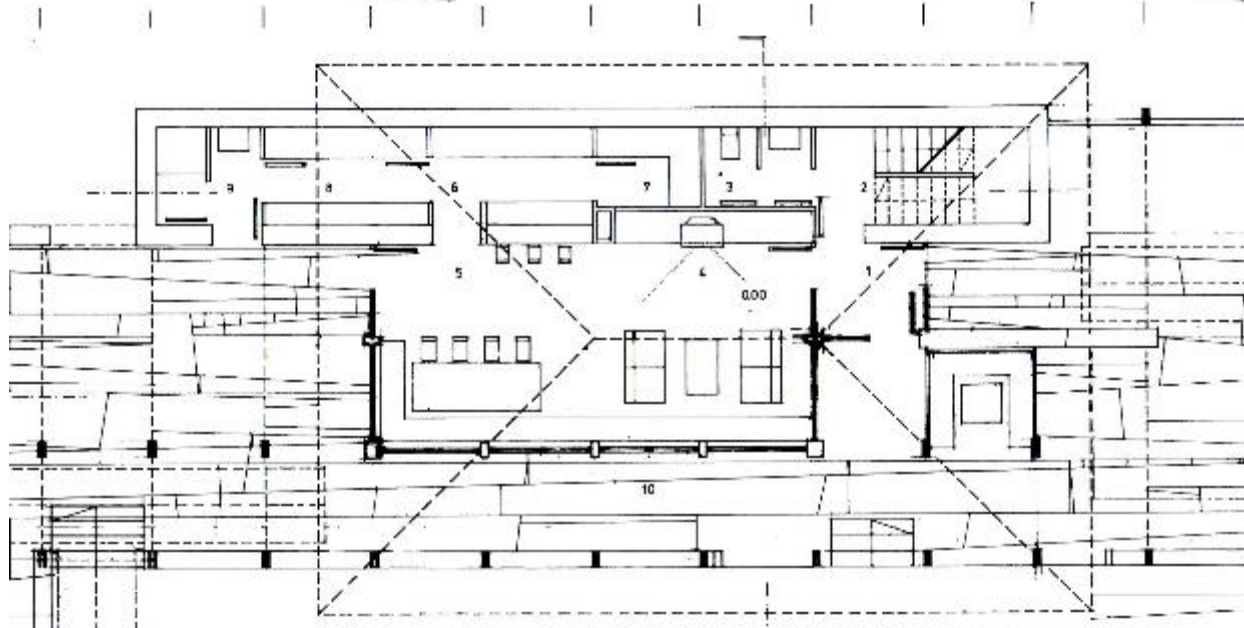
"вајат" - трећа генерација

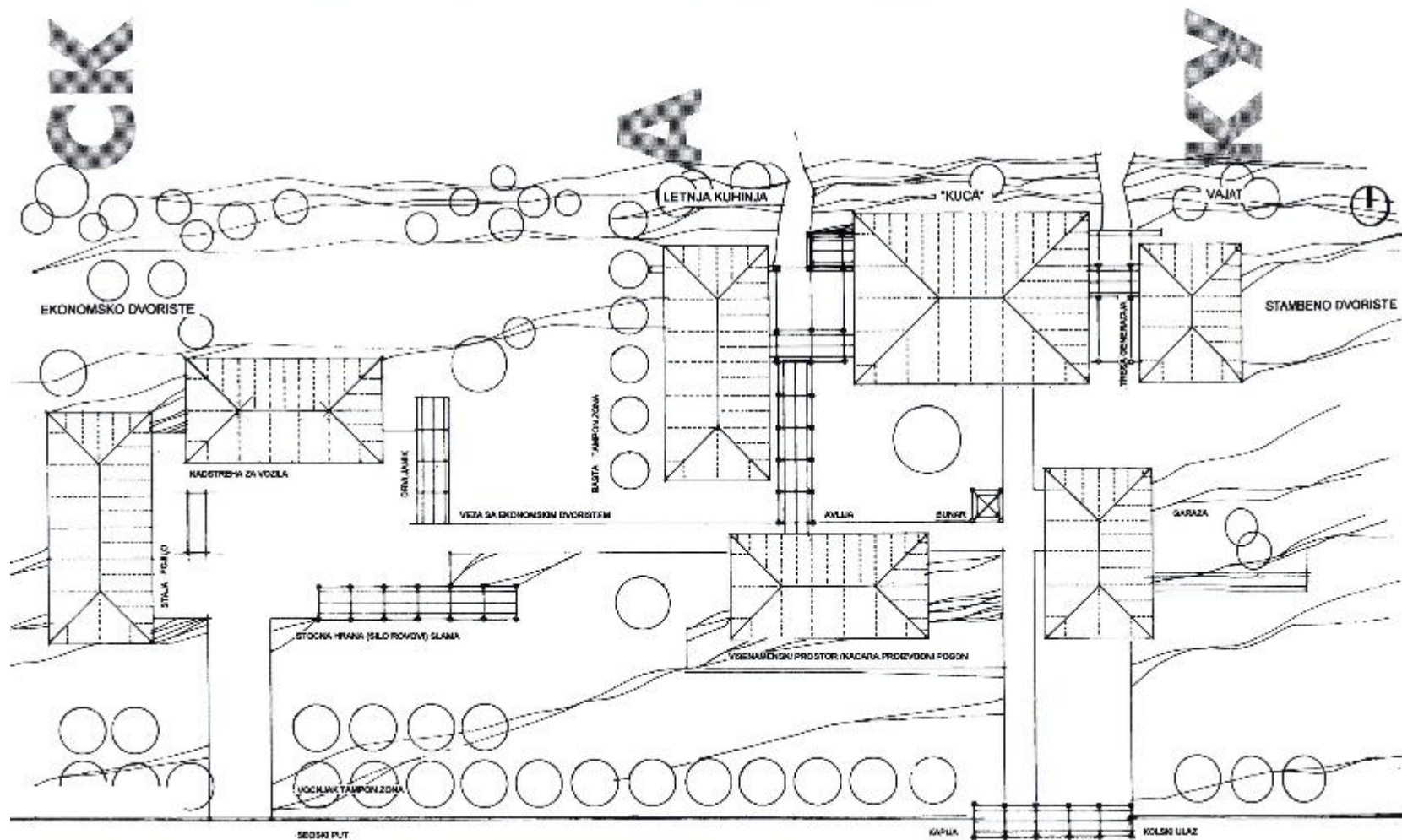
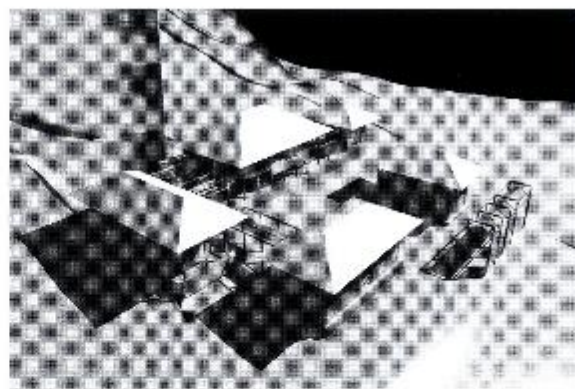
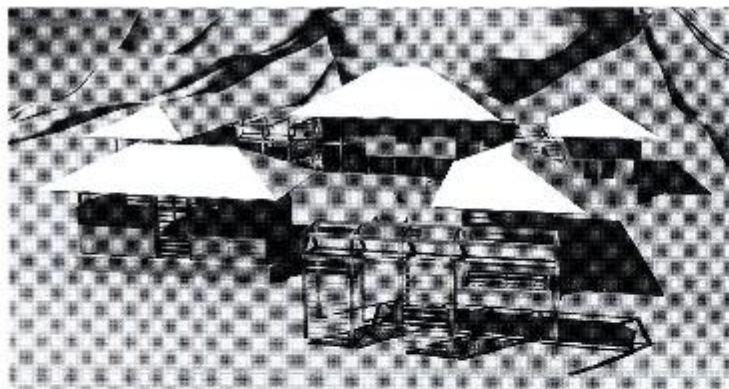




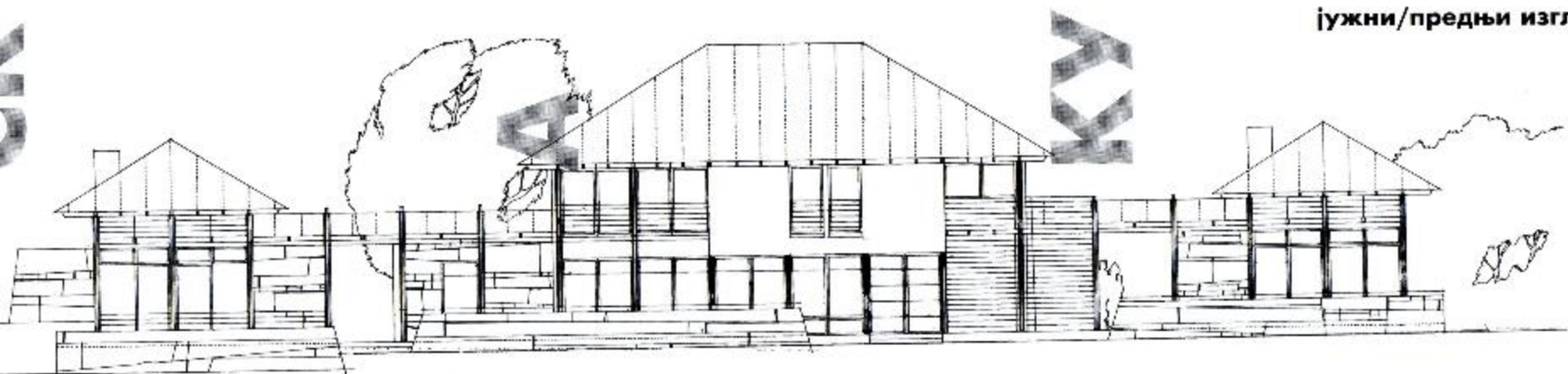
спрат 1:200

AT

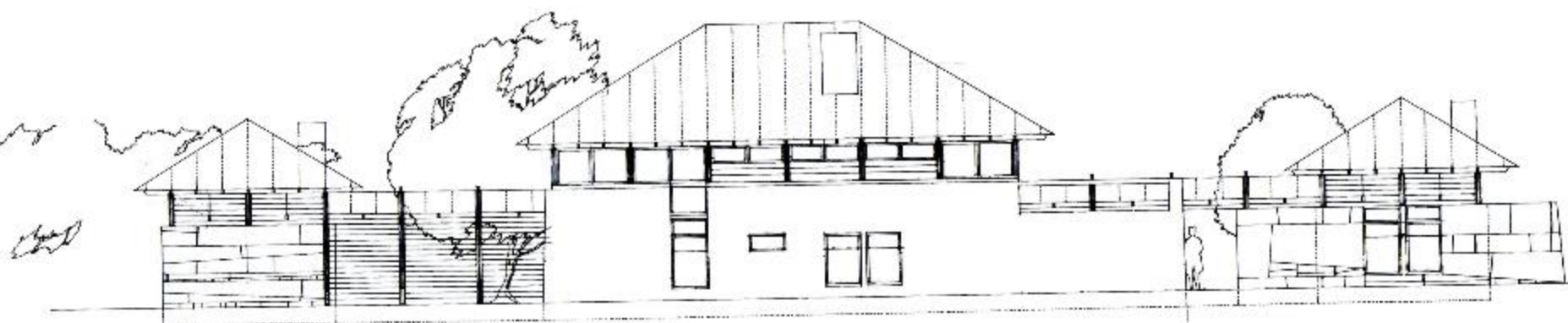




јужни/предњи изглед



северни/задњи изглед



ДО

М

приземље 1:15

