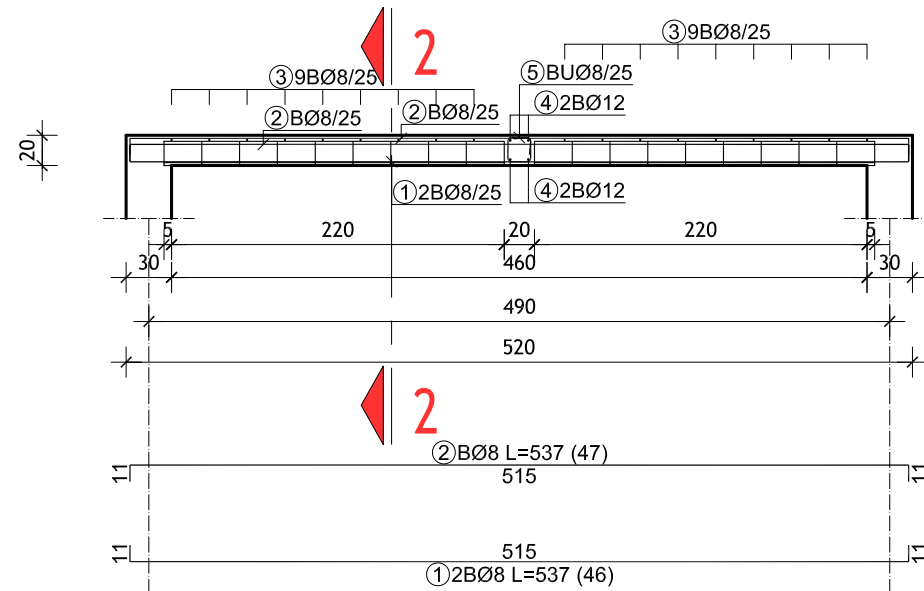
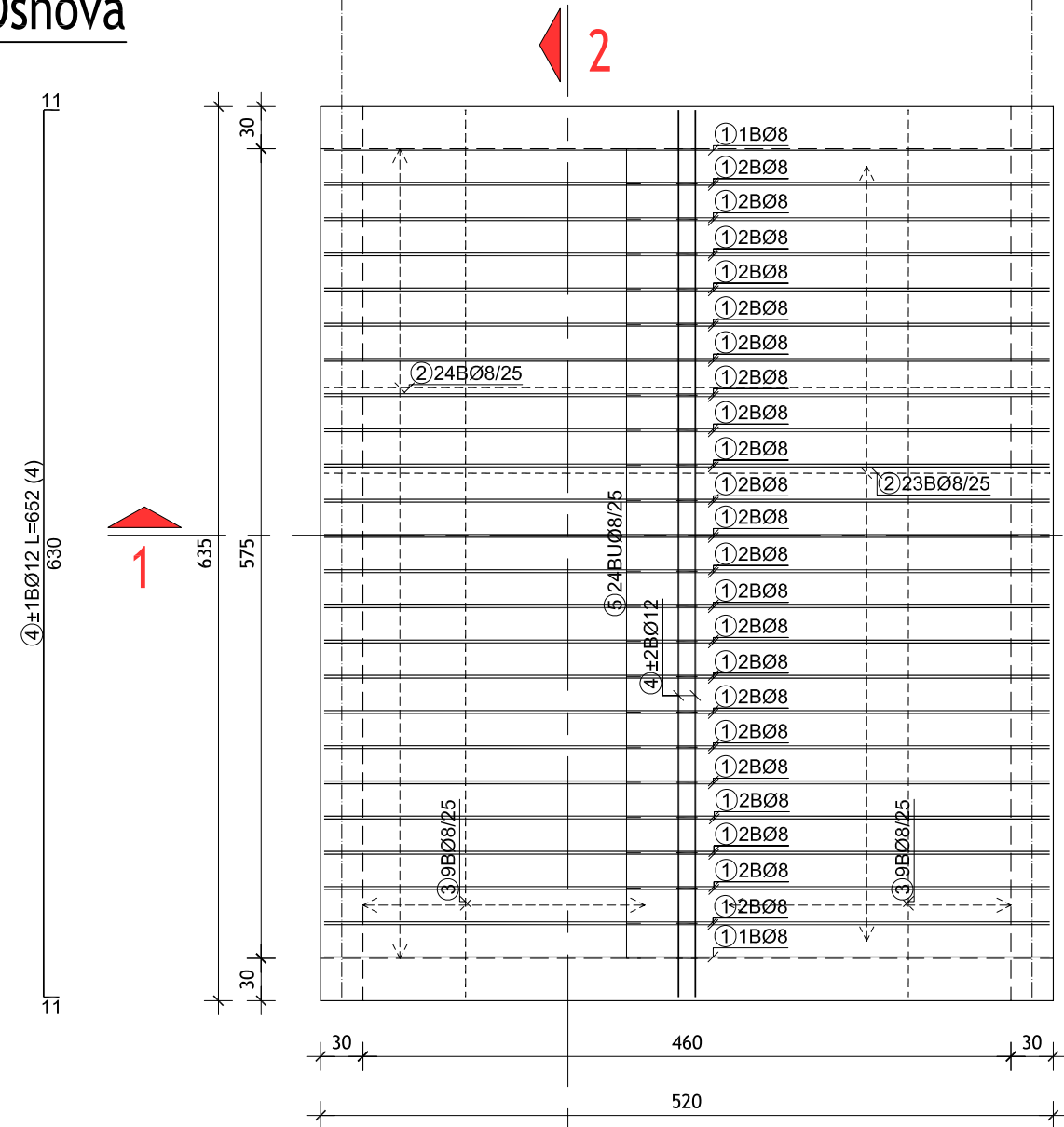


# Presek 1-1



# Osnova

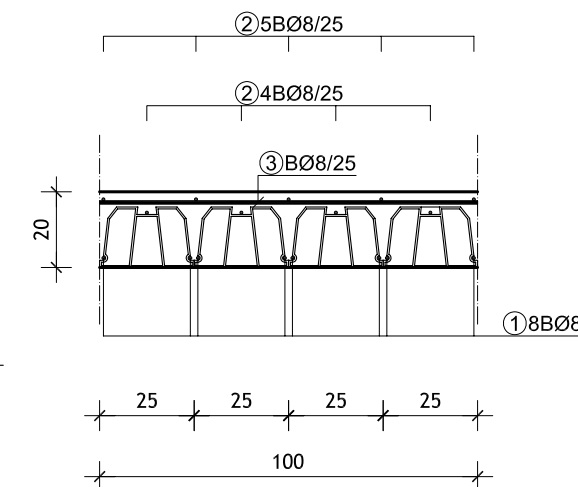


# POS P101 - MSK "MONTA"

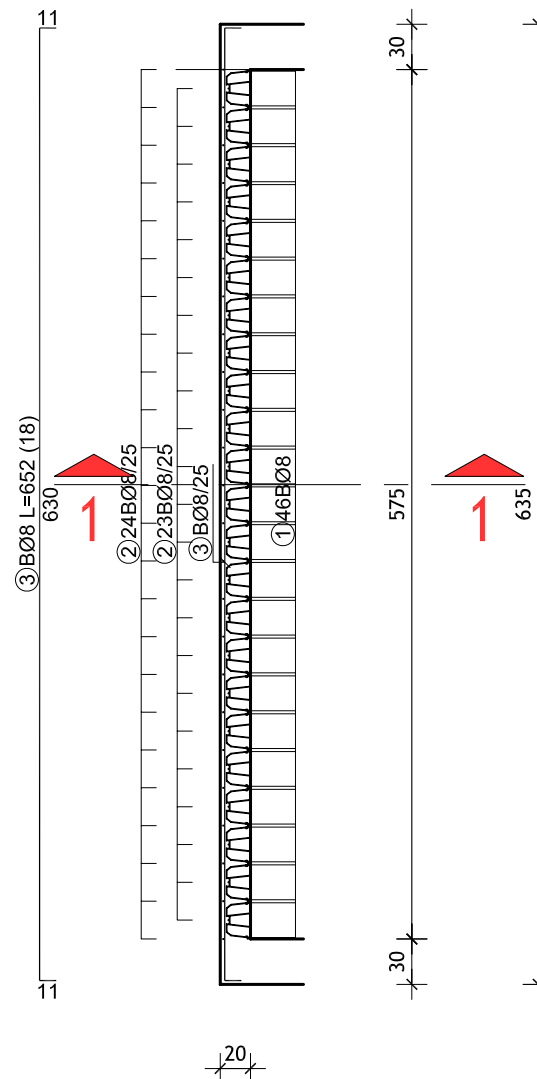
## PLAN ARMATURE

### POS P101

# Presek 2-2 R 1:20



# Presek 2-2



Šipke - specifikacija					
ozn.	oblik i mere [cm]	Ø	lg [m]	n [kom]	lgn [m]
POS P101-TM (1 kom)					
1	11	8	5.37	46	247.02
2	11	8	5.37	47	252.39
3	11	8	6.52	18	117.36
4	11	12	6.52	4	26.08
5	15	8	0.80	24	19.20

Šipke - rekapitulacija			
Ø [mm]	lgn [m]	Jedinična težina [kg/m]	Težina [kg]
B500B			
8	635.97	0.41	257.57
12	26.08	0.91	23.76
Ukupno			281.33

BETON | **MB30**  
 ARMATURA | **B500B**

GRADEVINSKO-ARHITEKTONSKI FAKULTET UNIVERZITET U NIŠU			
Niš, ul. Aleksandra Medvedeba br.14			
PREDMET	BETONSKE KONSTRUKCIJE 2		
SEMESTRALNI RAD	ZADATAK 5.A.		
KANDIDAT	PREDMETNI NASTAVNIK	dr Predrag Blagojević, dipl.inž.grad.	
BROJ INDEKSA	ASISTENT	dr Darko Živković, dipl.inž.grad.	
CRTEŽ	POS P101 - MSK "MONTA"		ASISTENT
	PLAN ARMATURE		Aleksandar Šutanovac, dipl.inž.grad.
	RAZMERA	ŠKOLASKA	BROJ LISTA
	1 : 50	2019/2020.	1