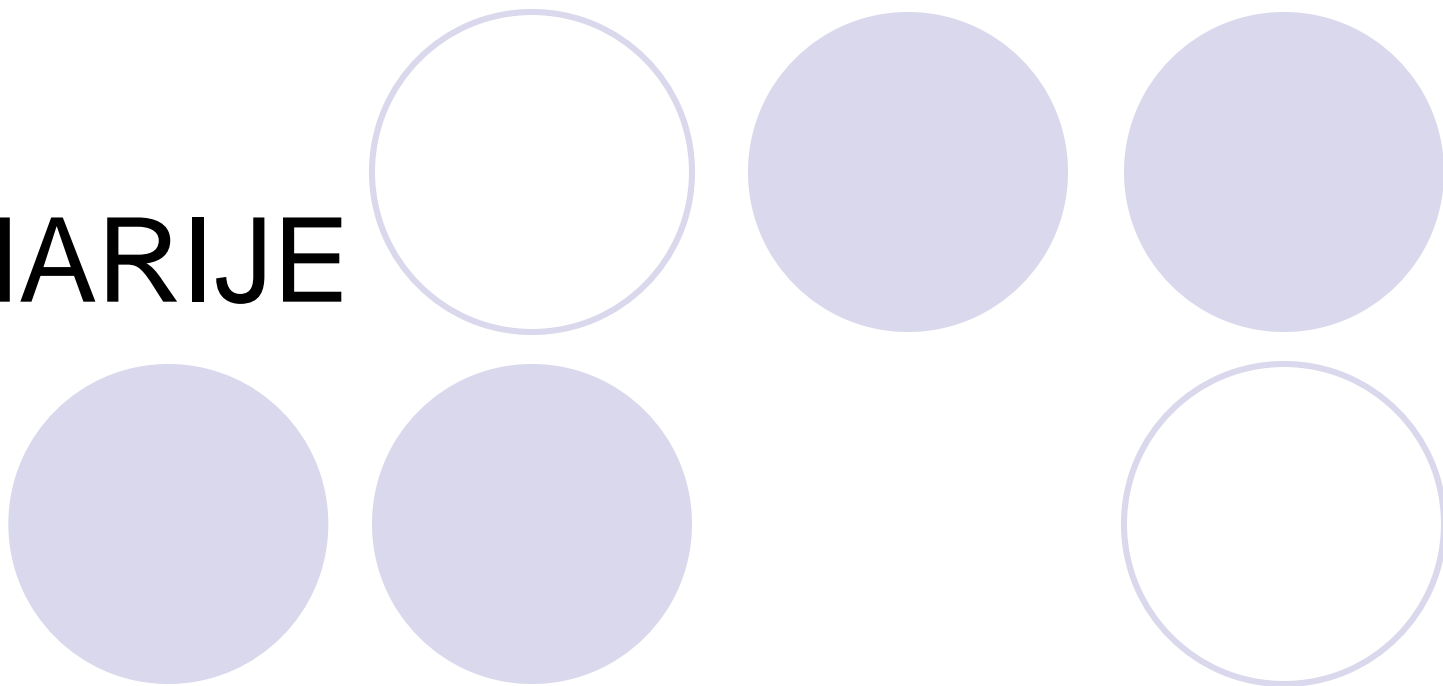
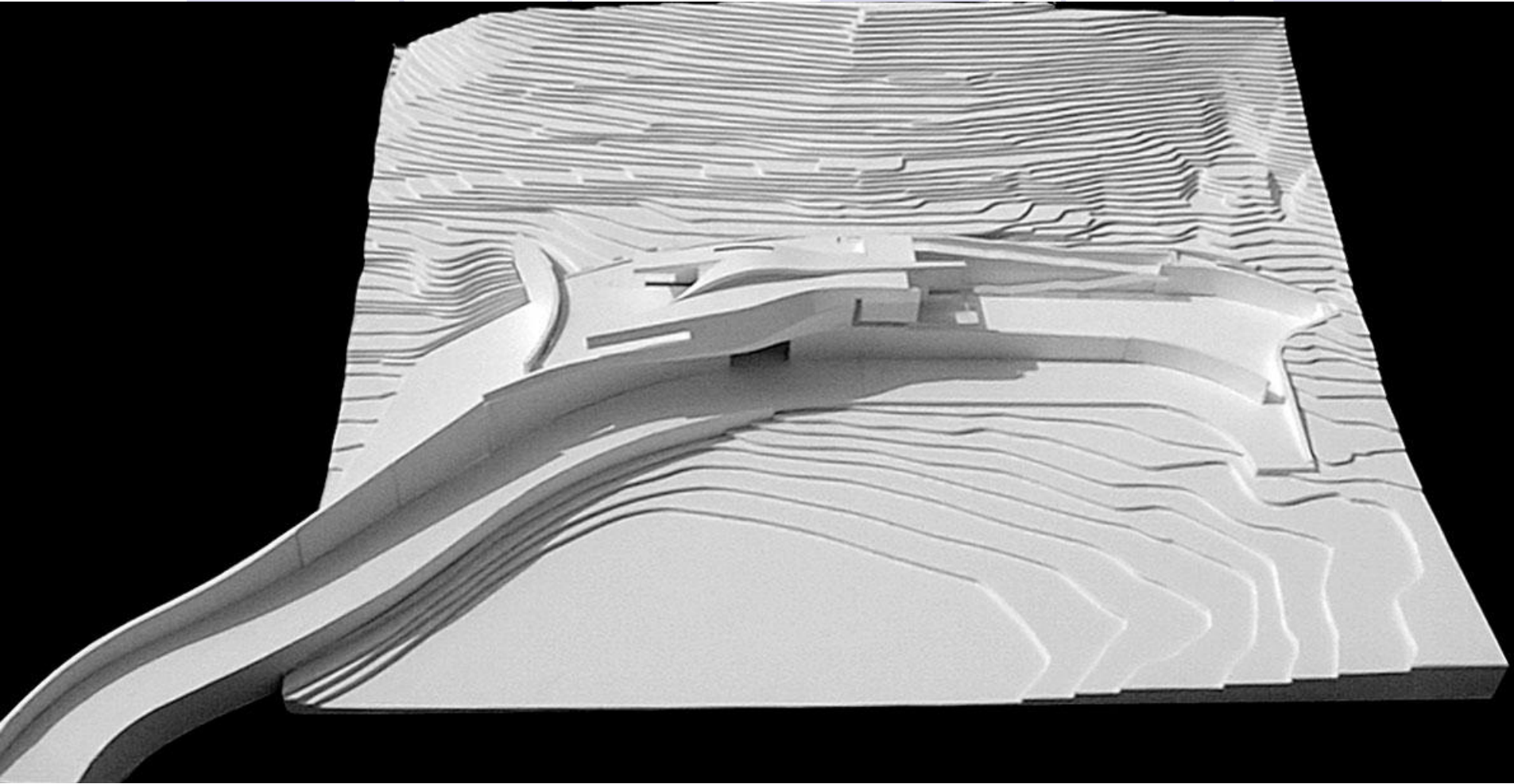
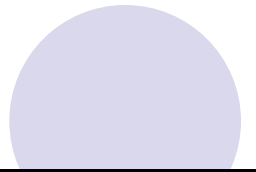
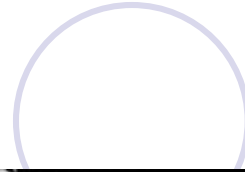
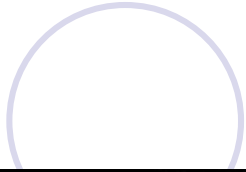
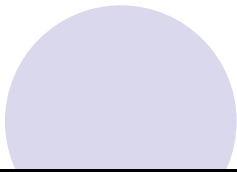
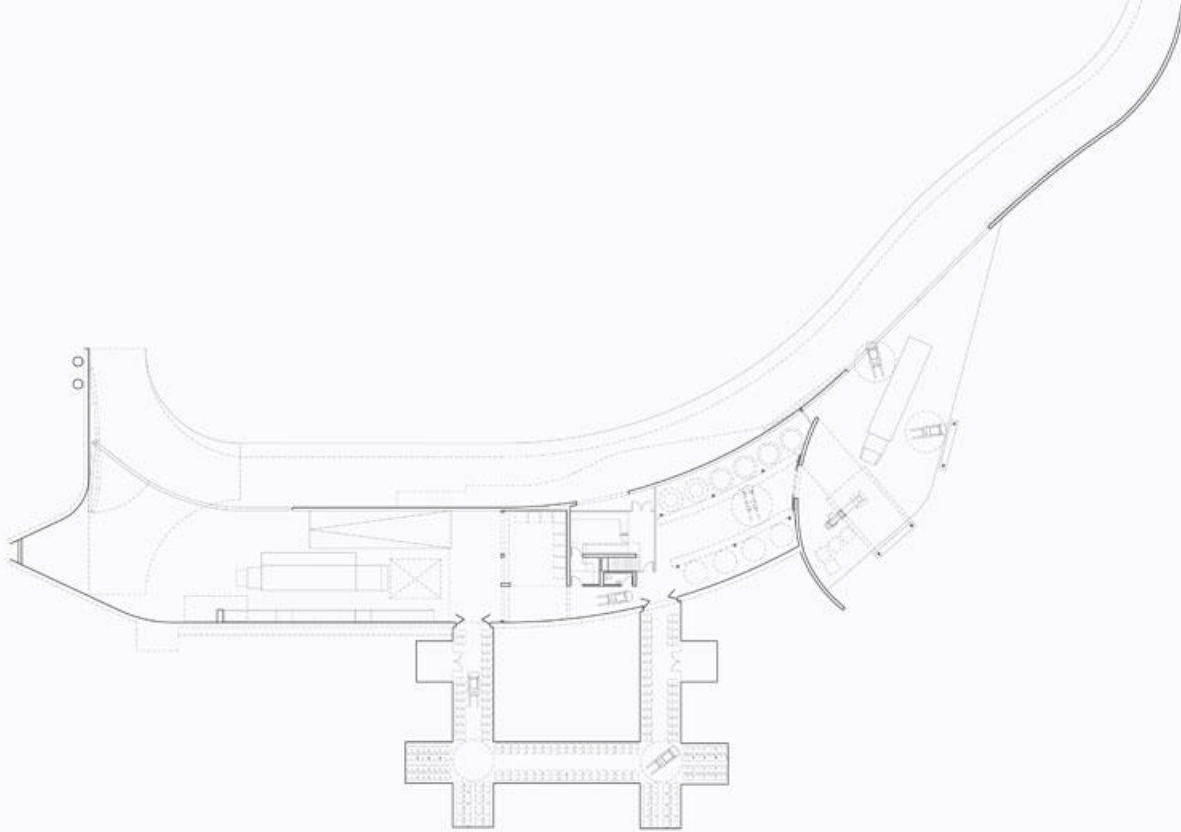


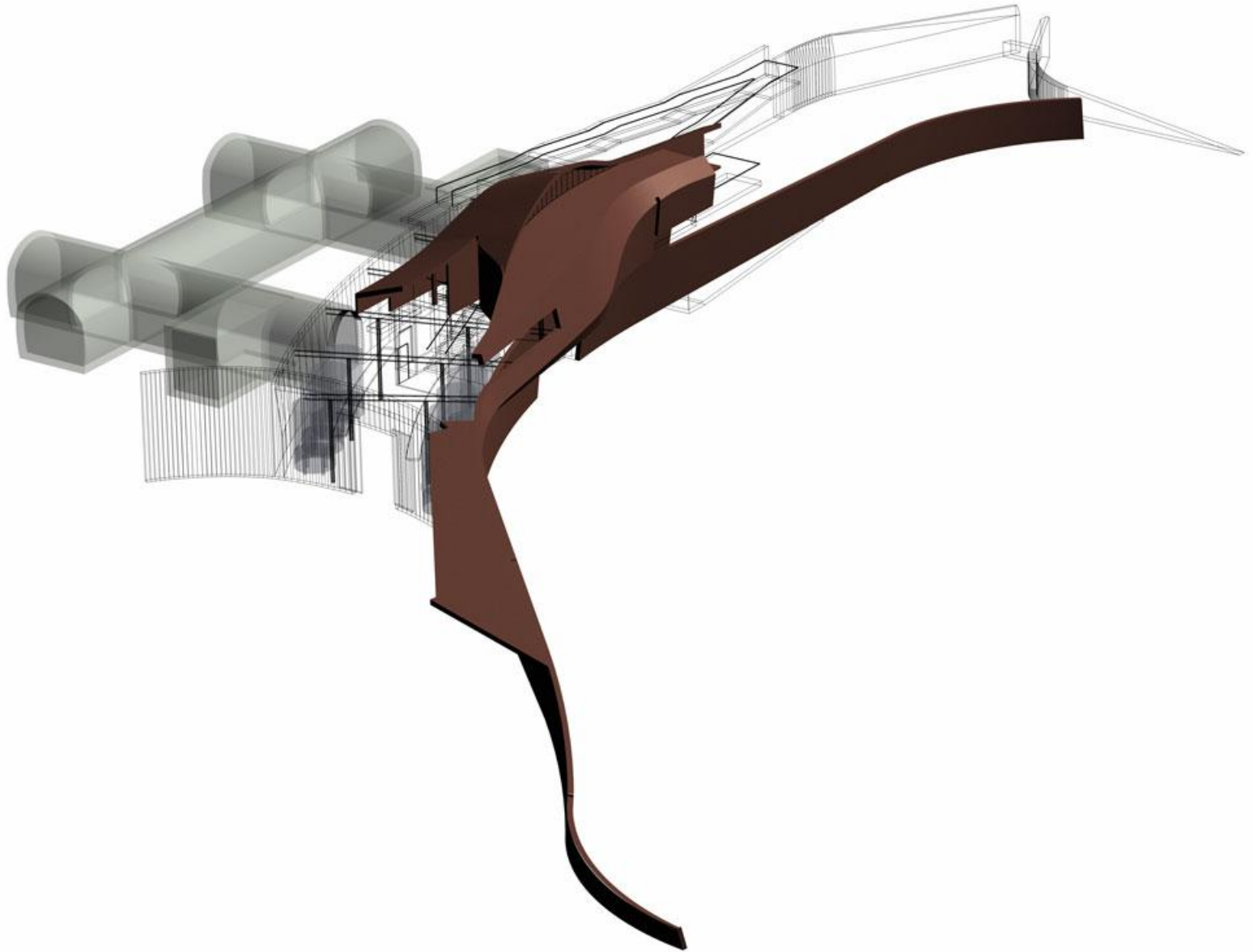
VINARIJE

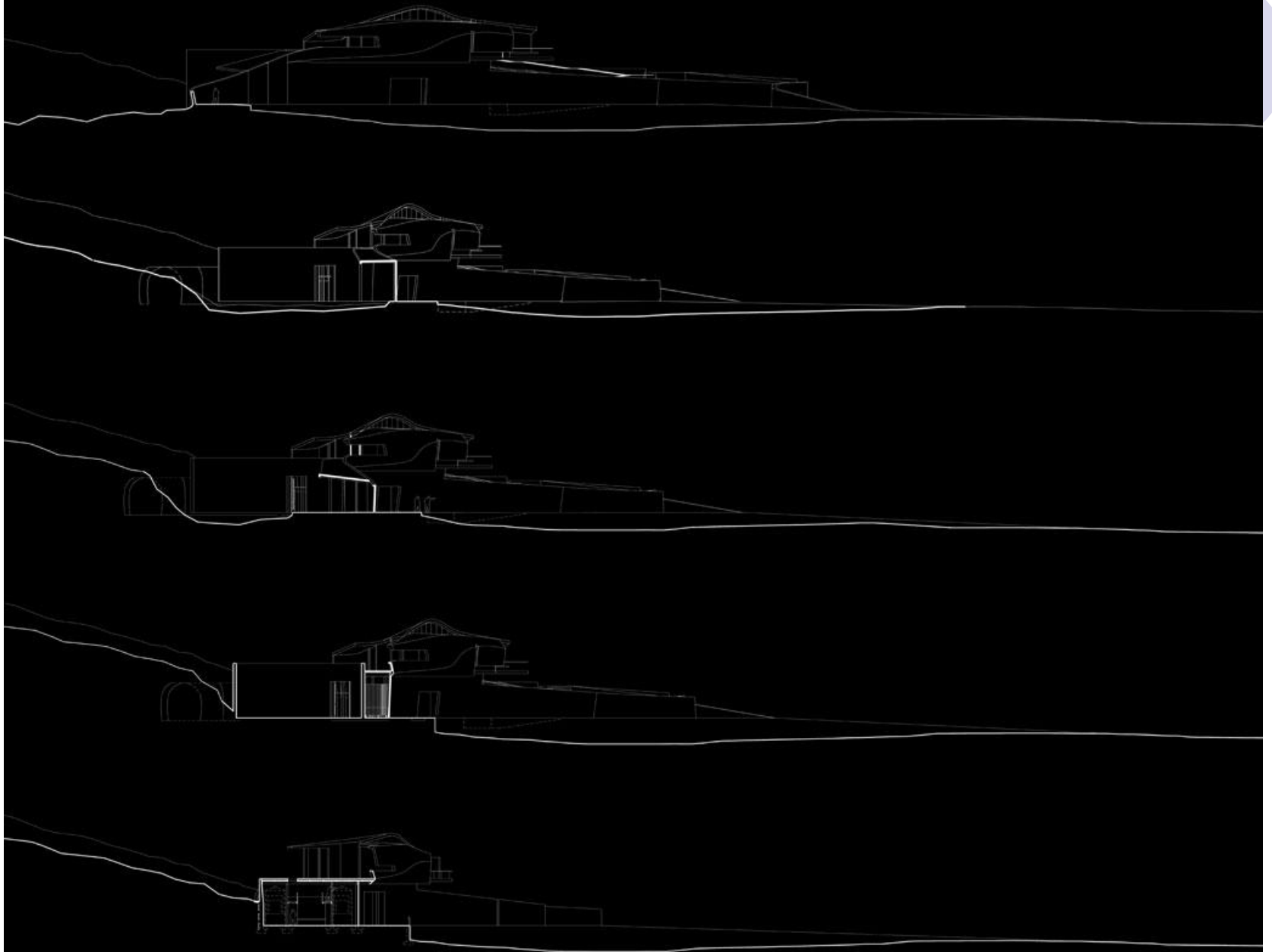


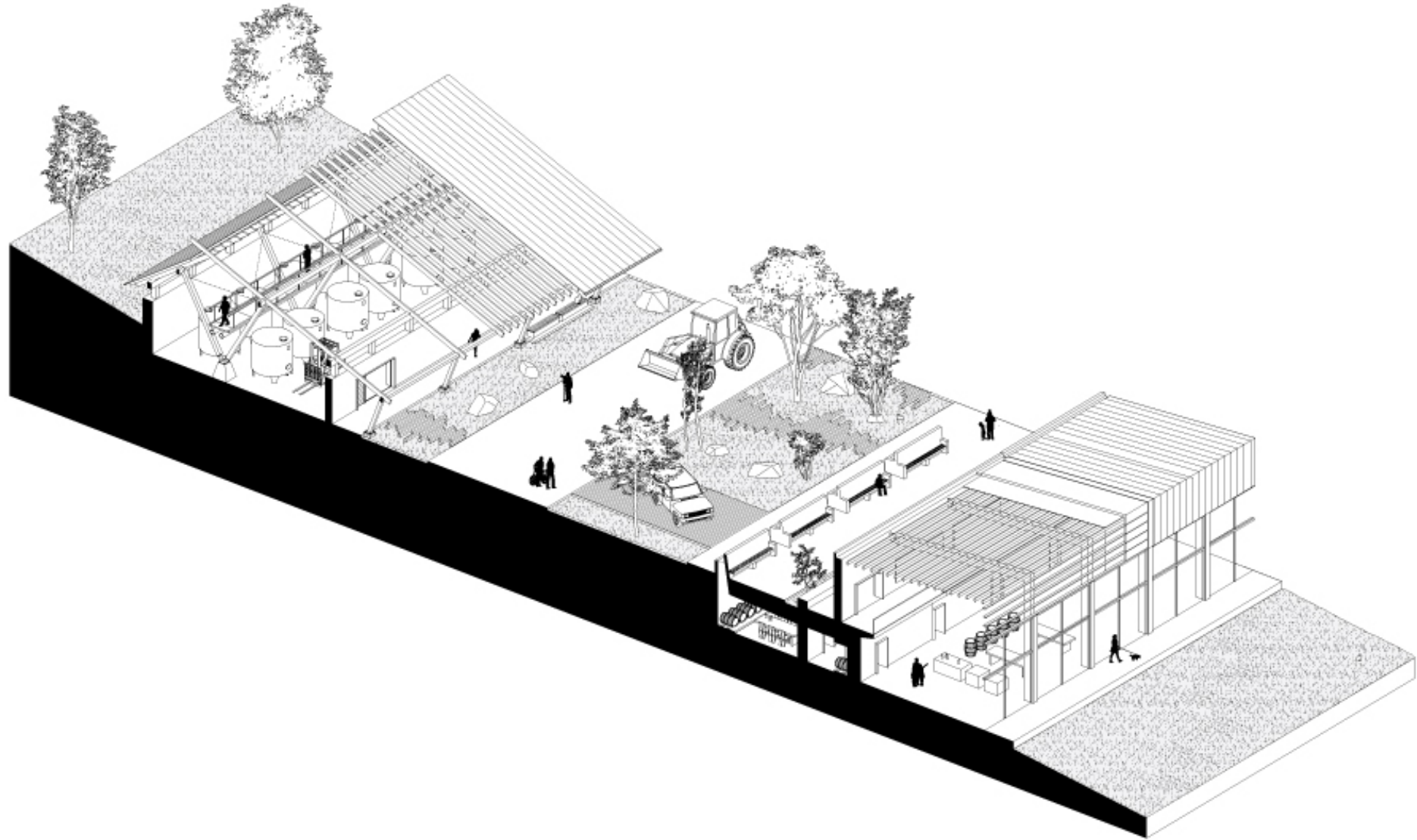


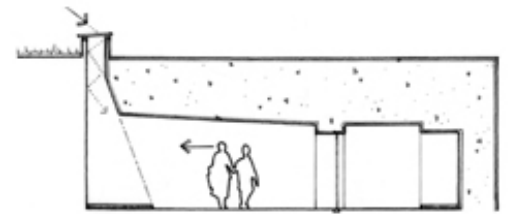
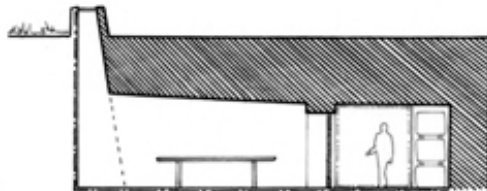
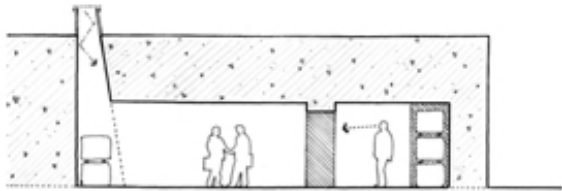
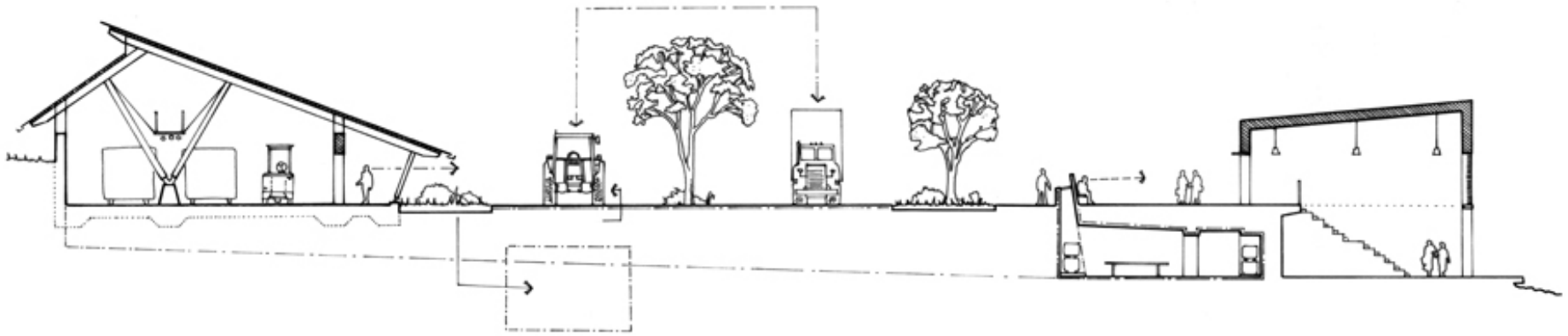


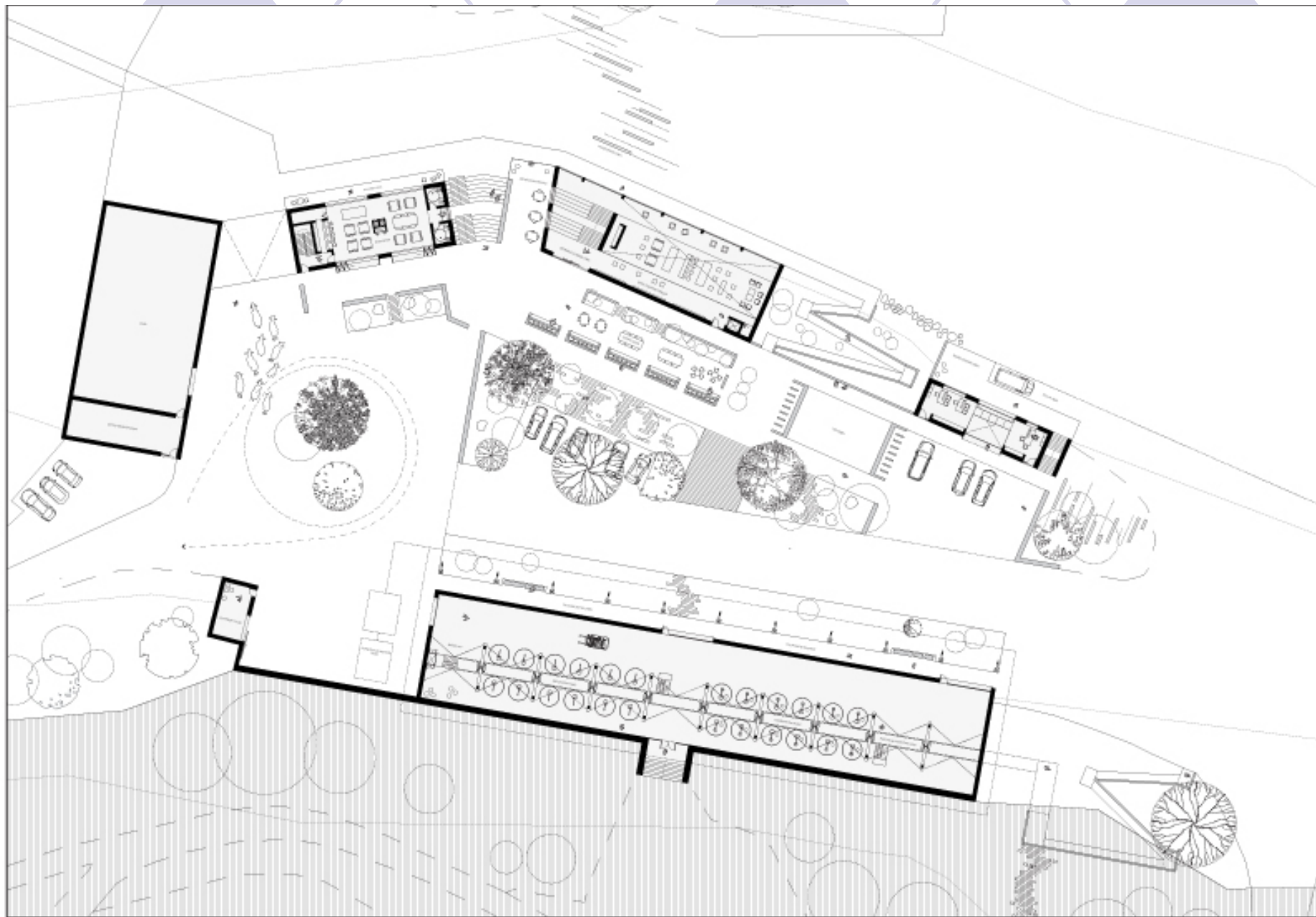
AZALEA SPRINGS WINERY

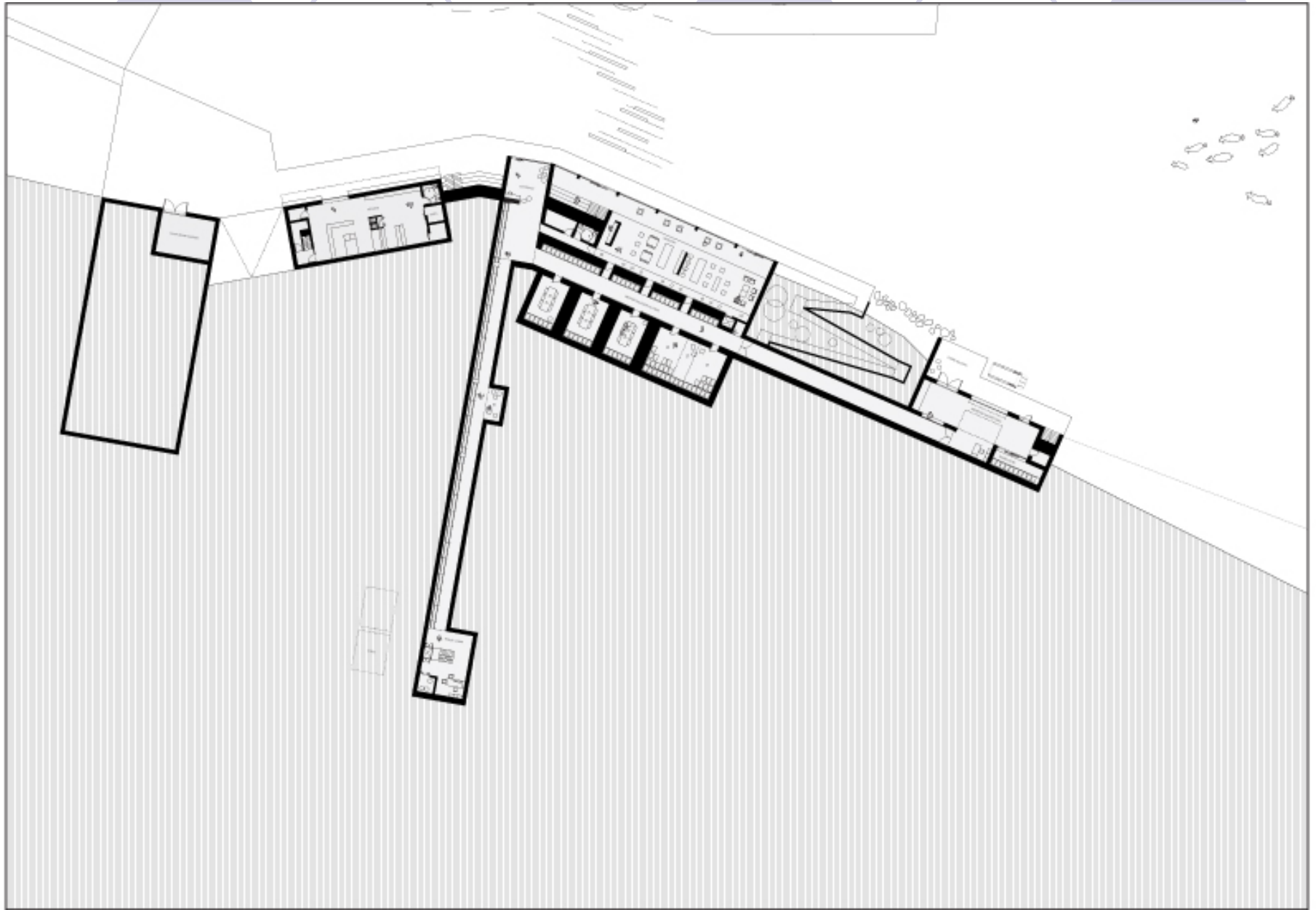




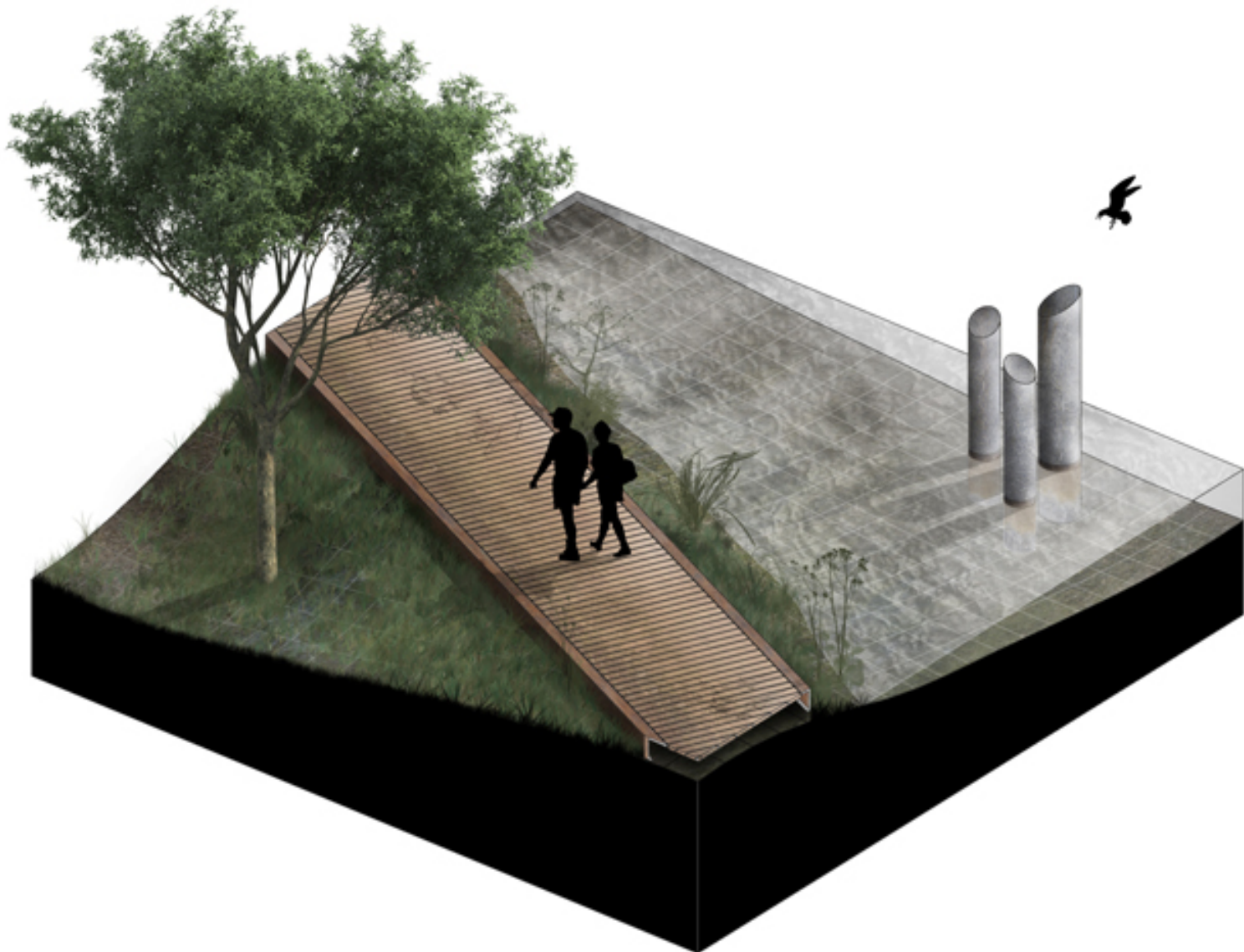














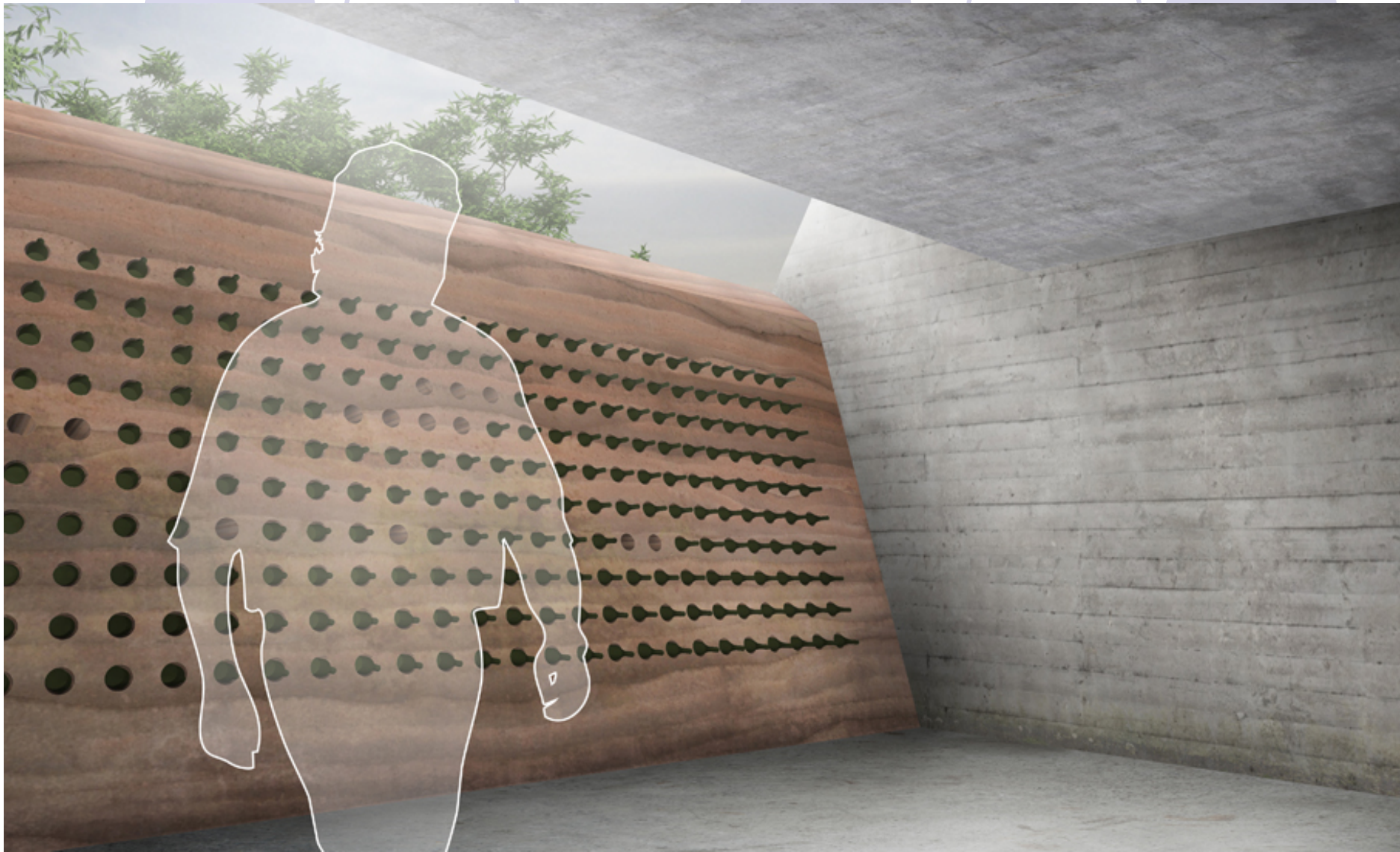
TASTING PAVILION AXONOMETRIC

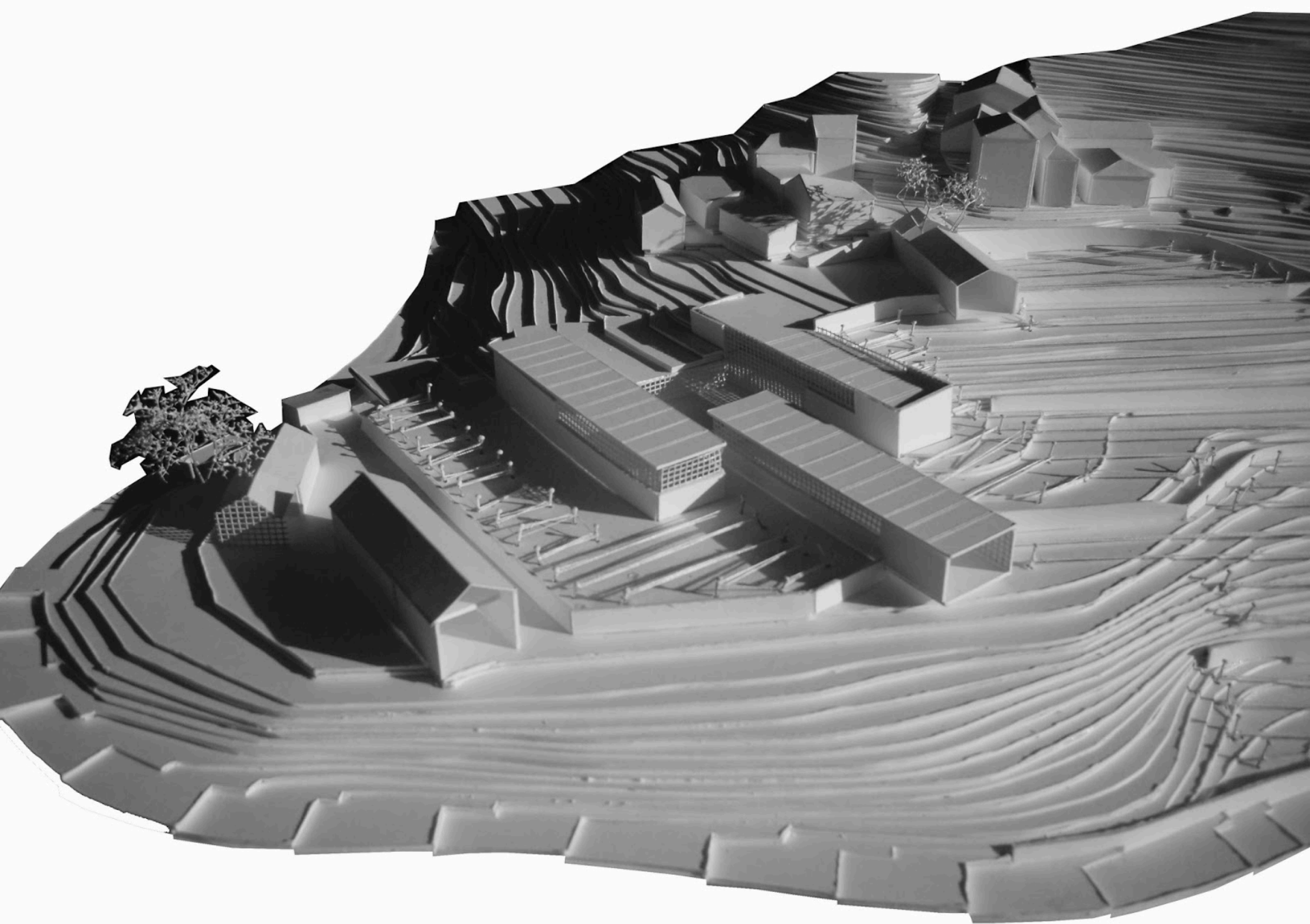
SCALE 1:150

Functionally the pavilion provides a place to entertaining with some basic services. The pavilion holds a store of wine bottles for tasting and tour groups. Set into the rear retaining wall the bottles stay cool while remaining on show to the visitors.

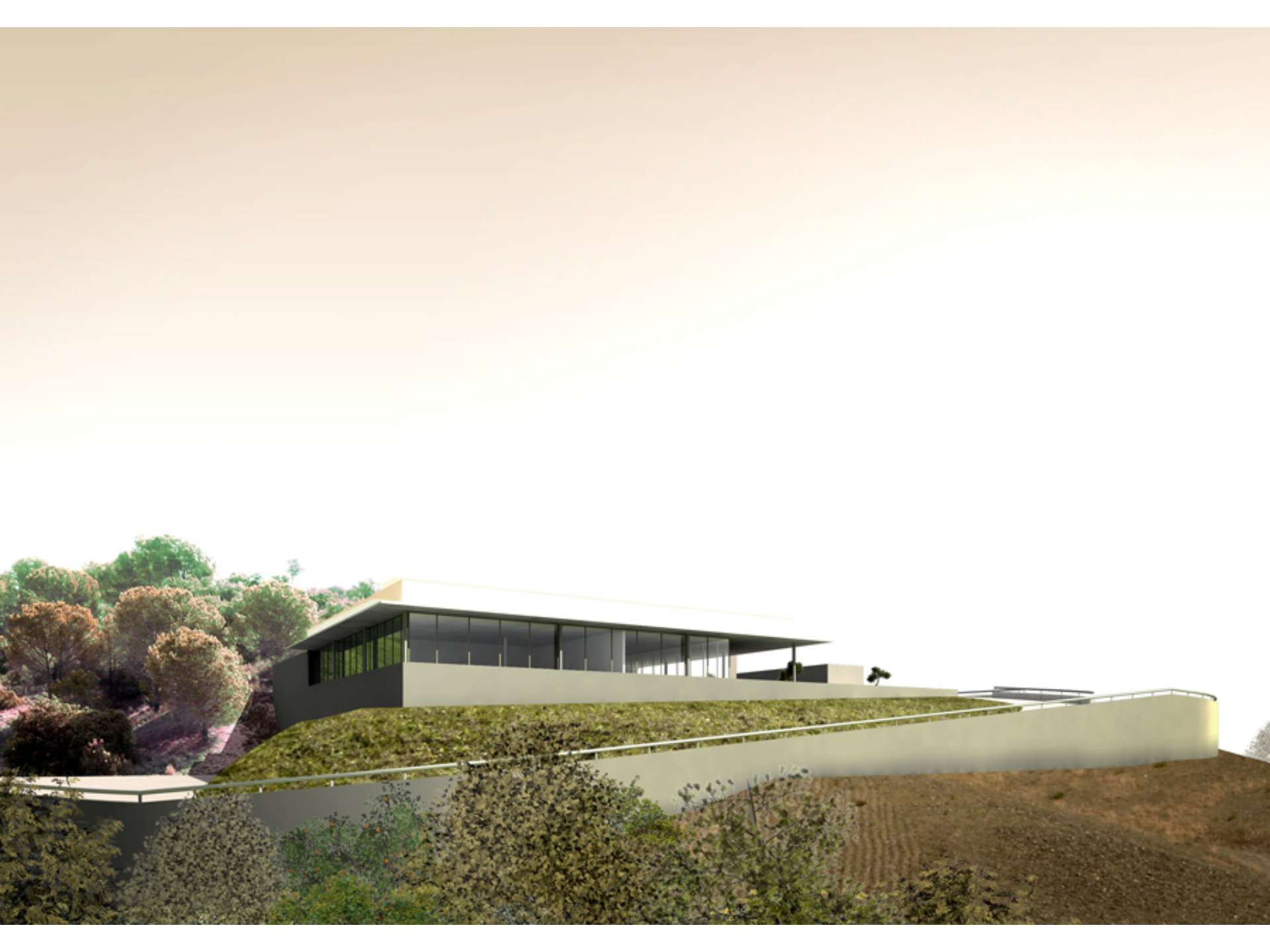
The pavilion and courtyard follow the natural slope of the site, emphasising the importance of topography to terroir.







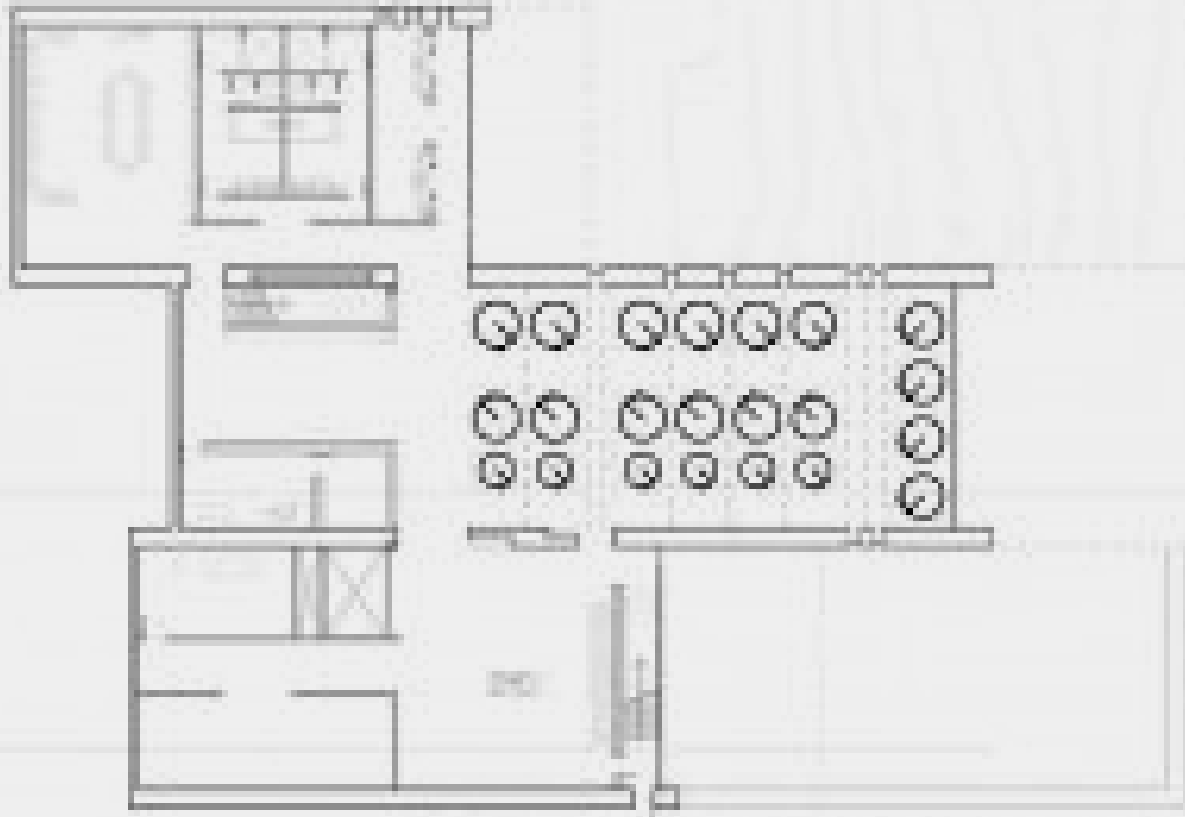




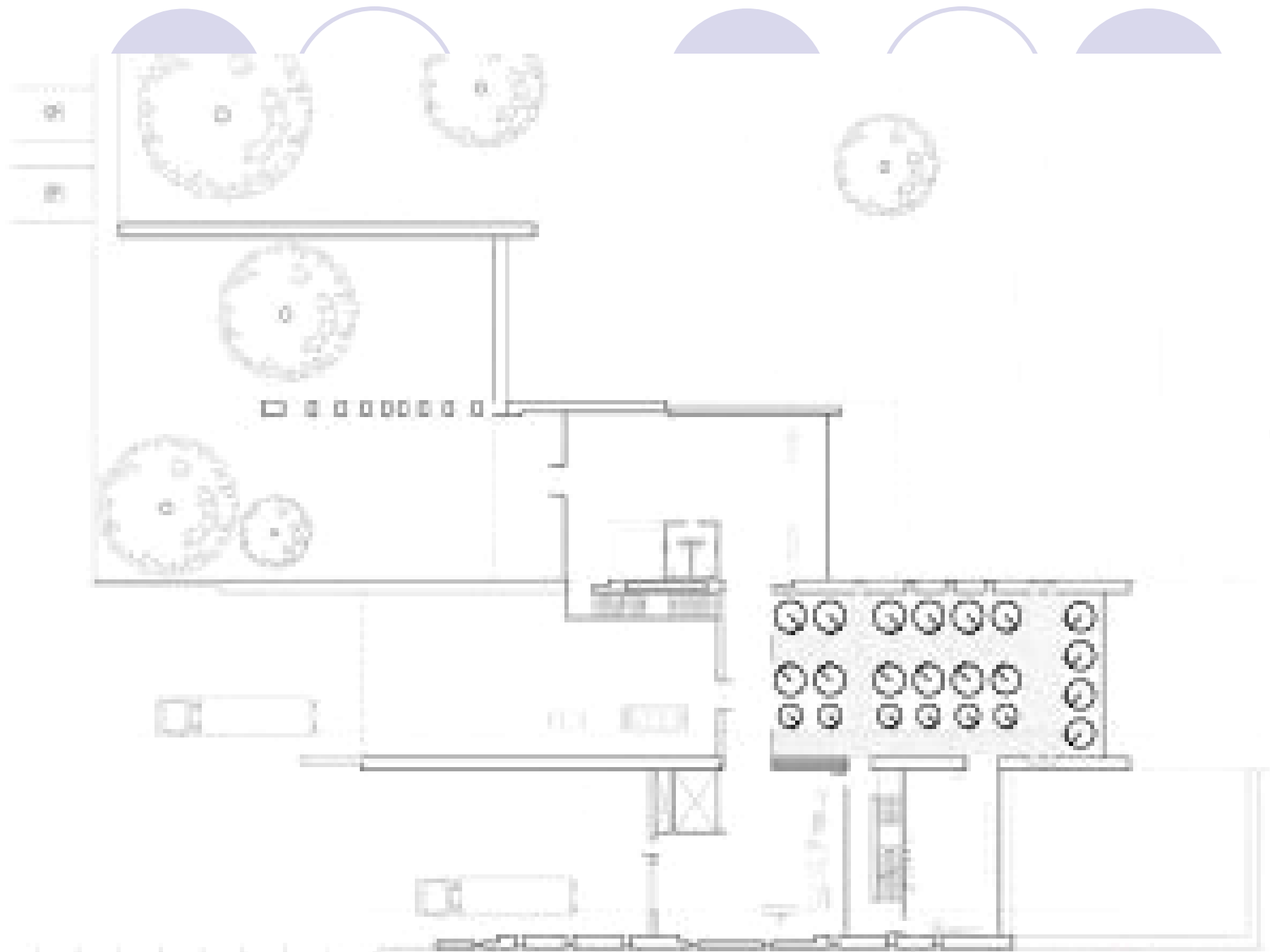


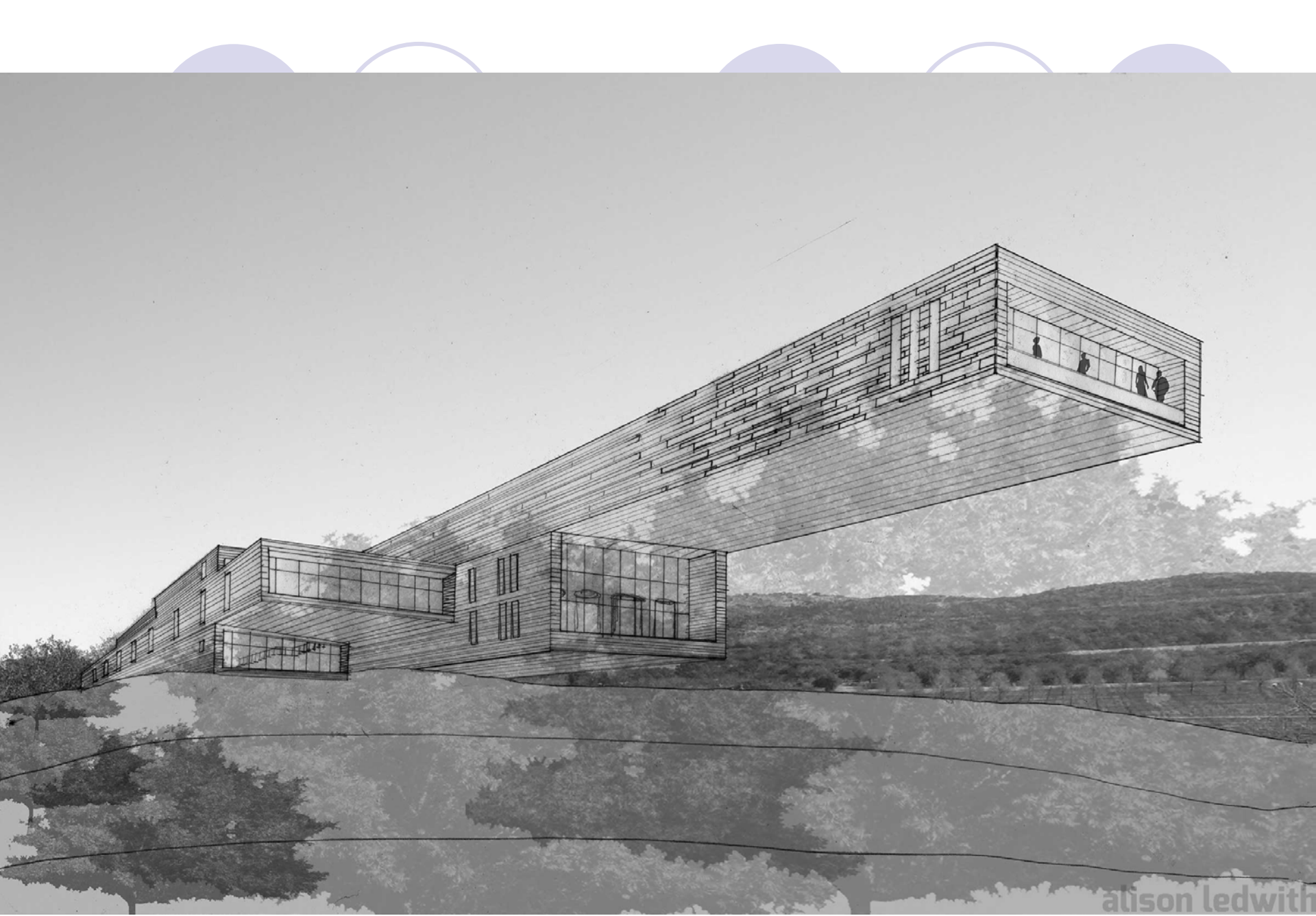




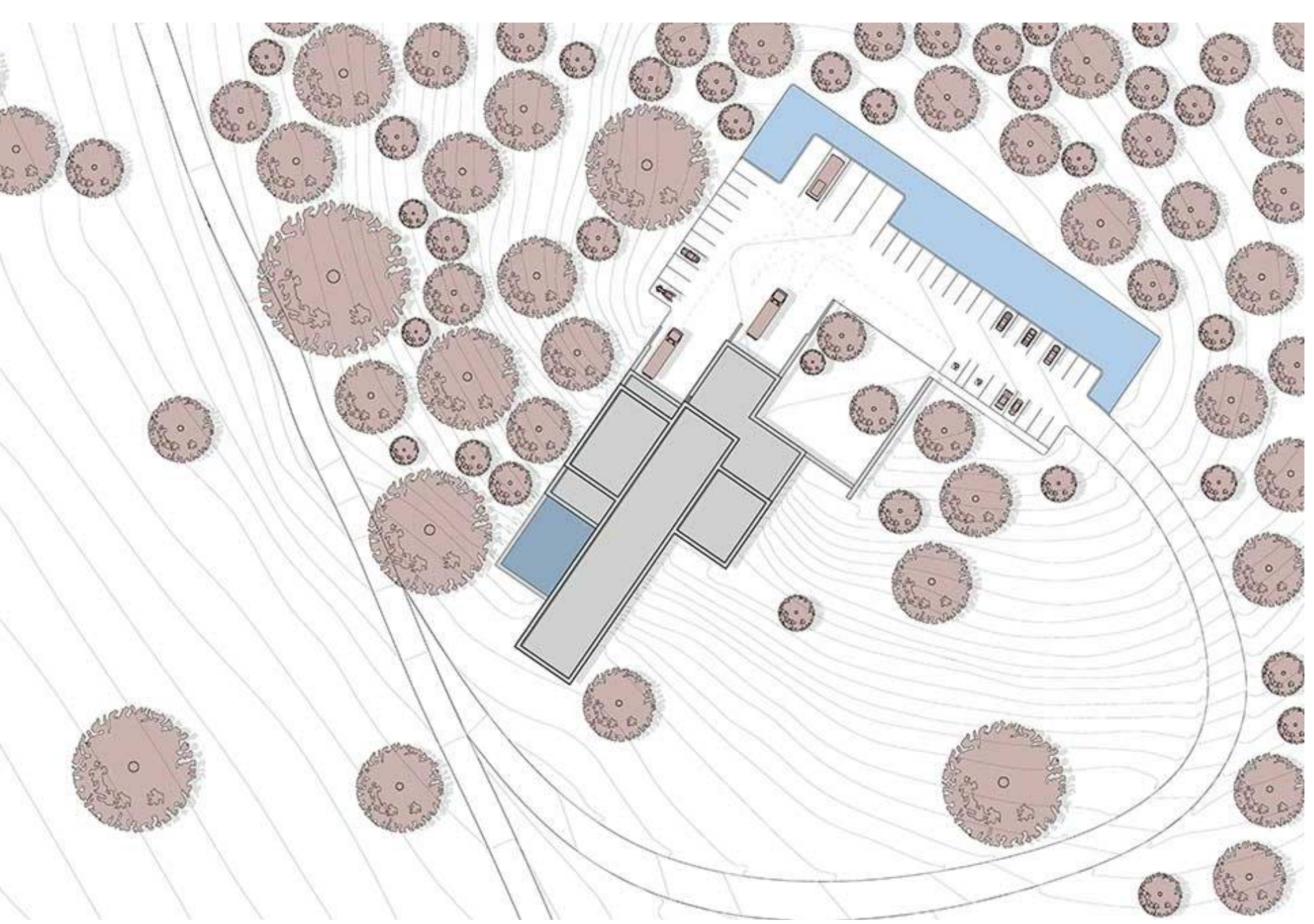


alison ledwith

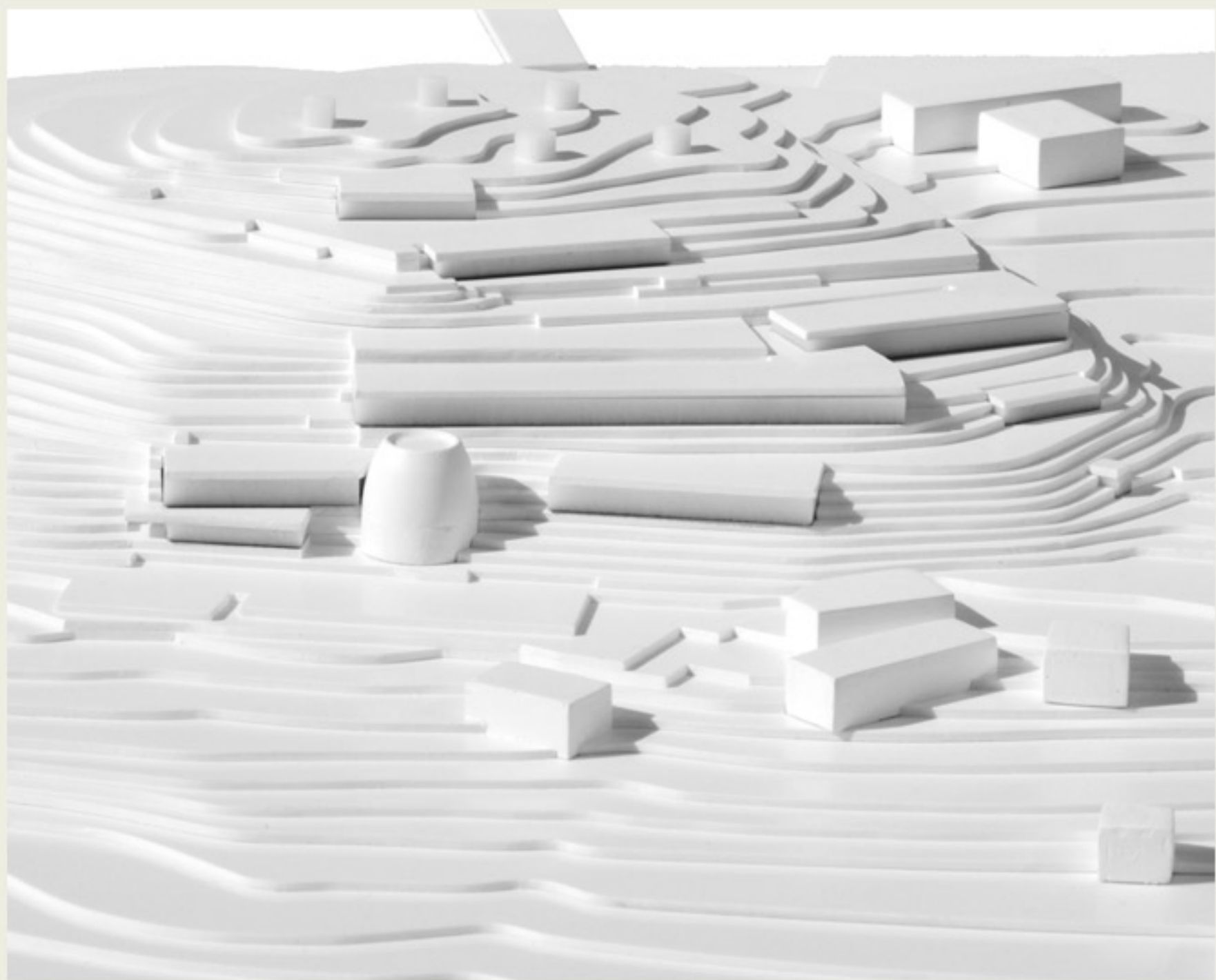


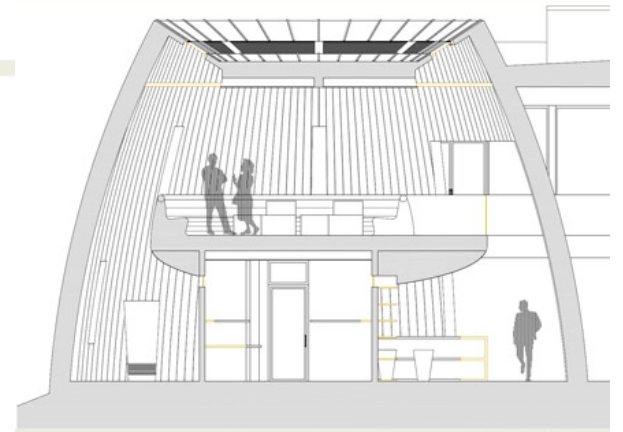
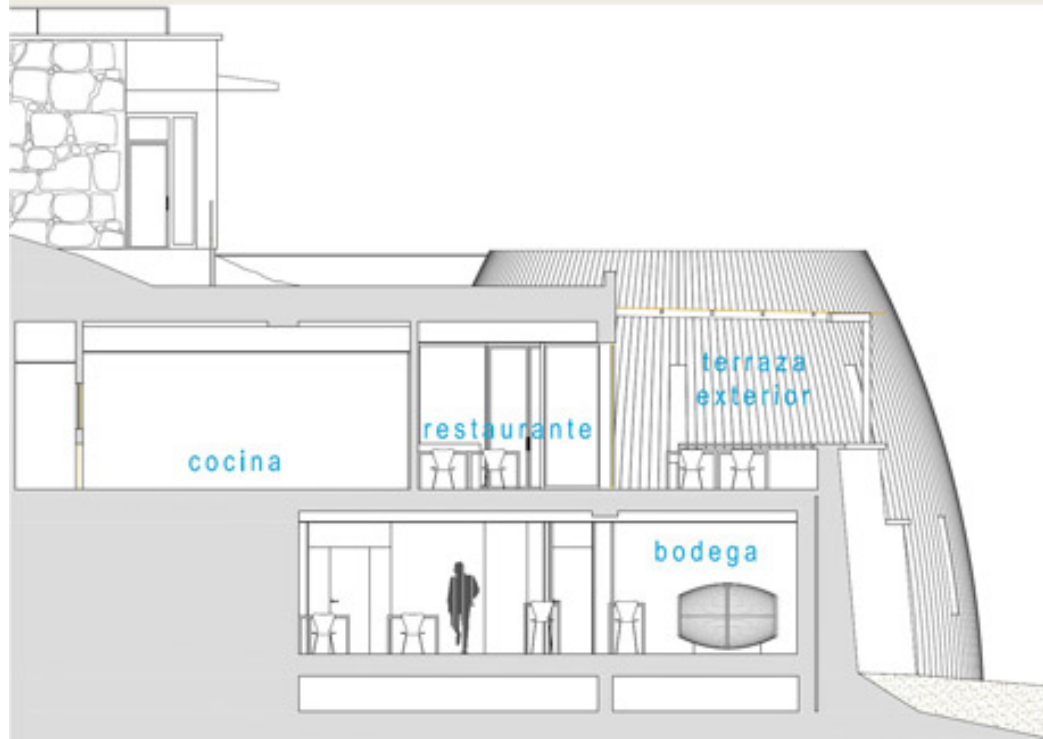
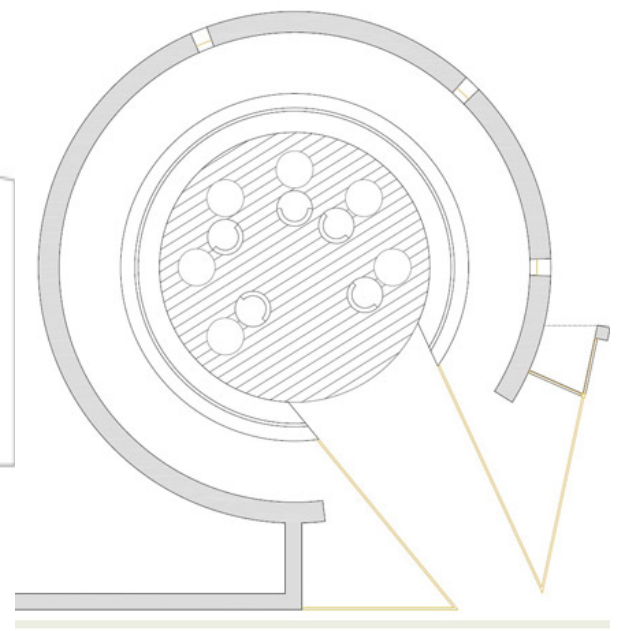
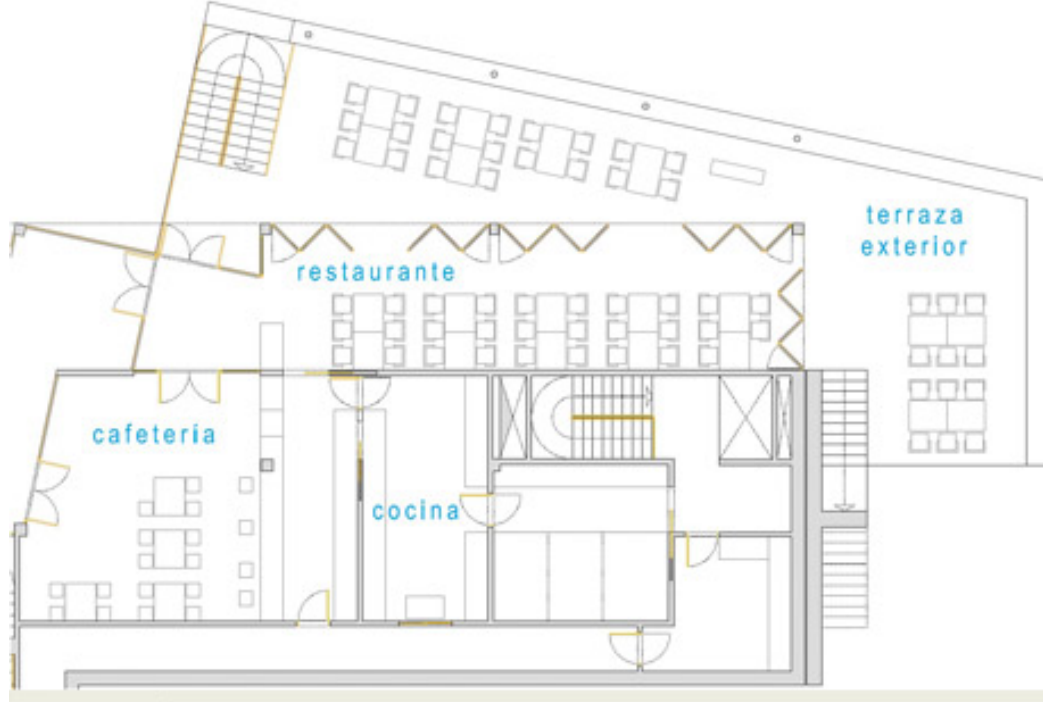


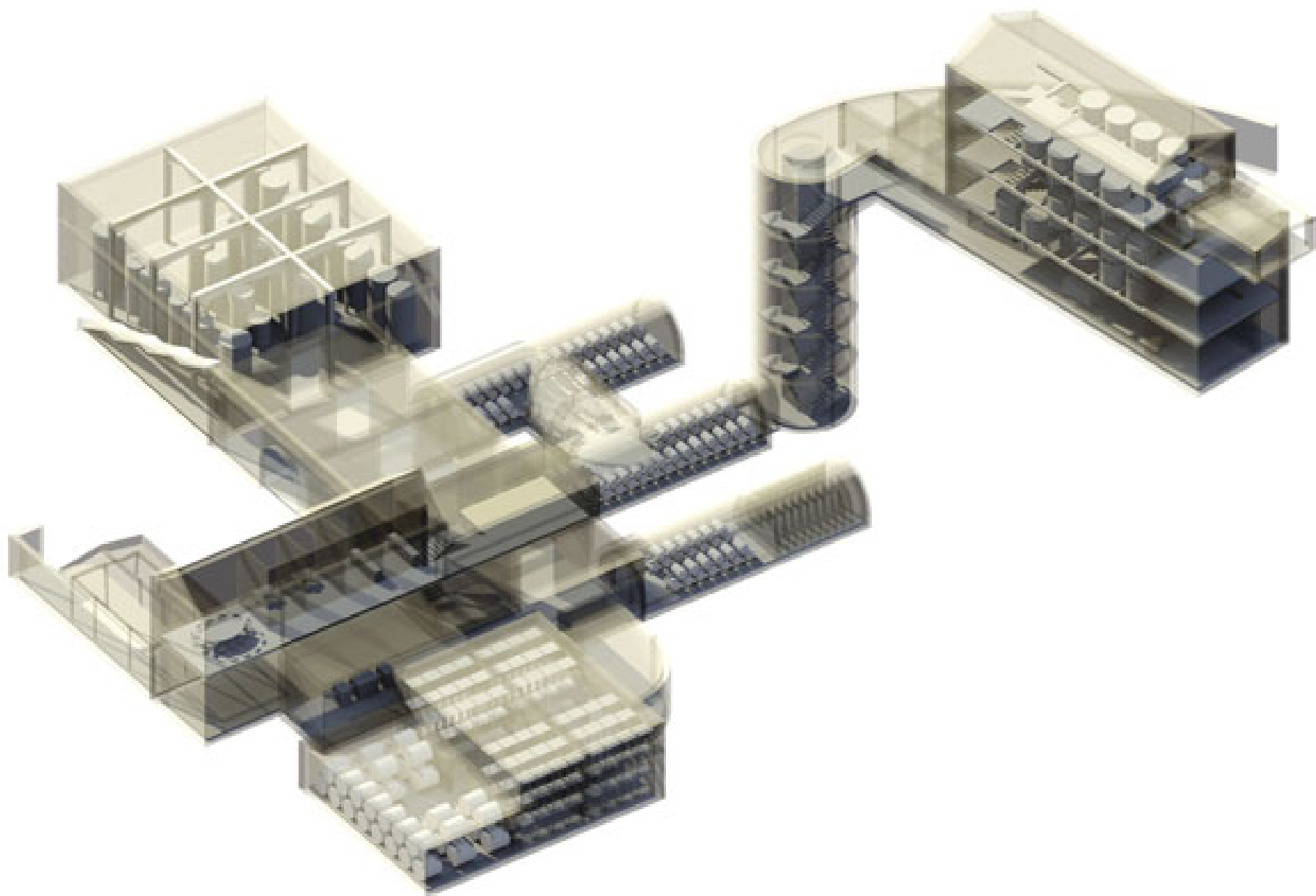
alison ledwith

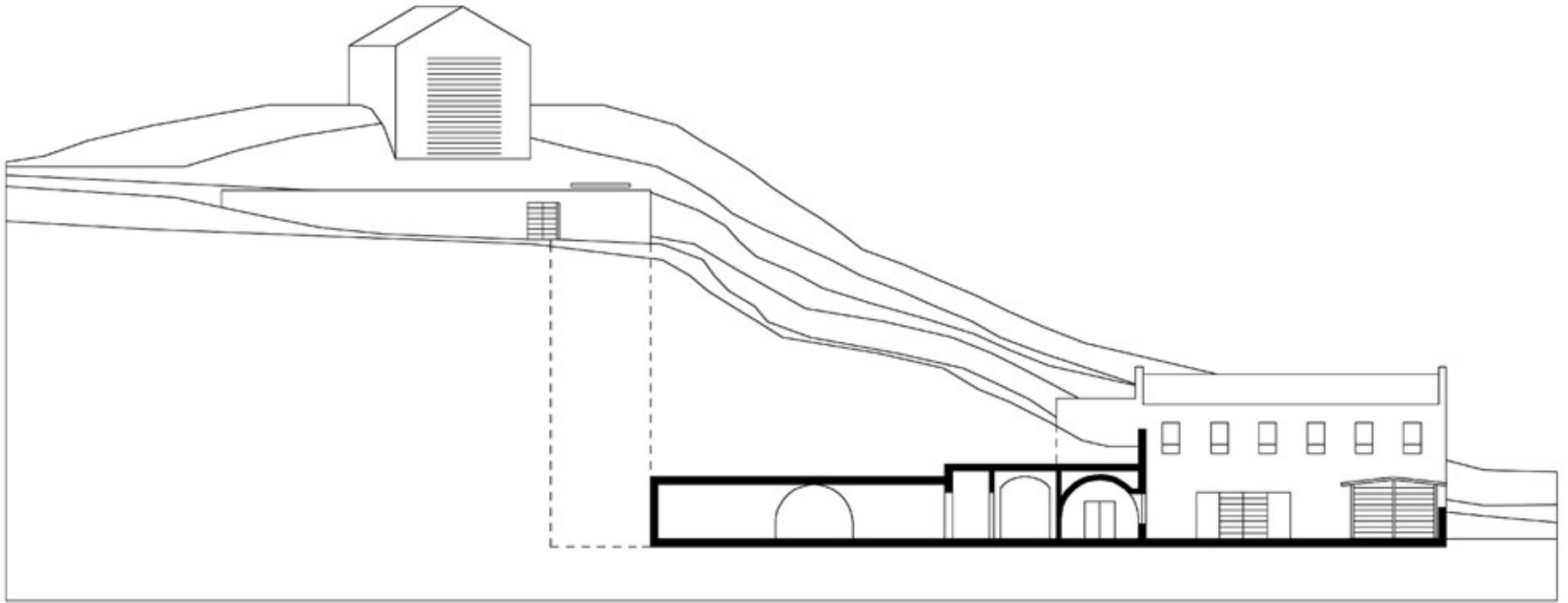


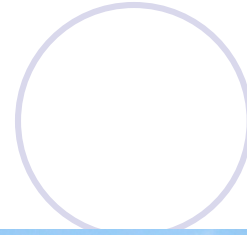
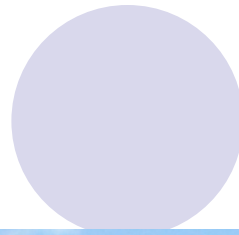
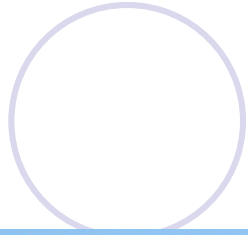


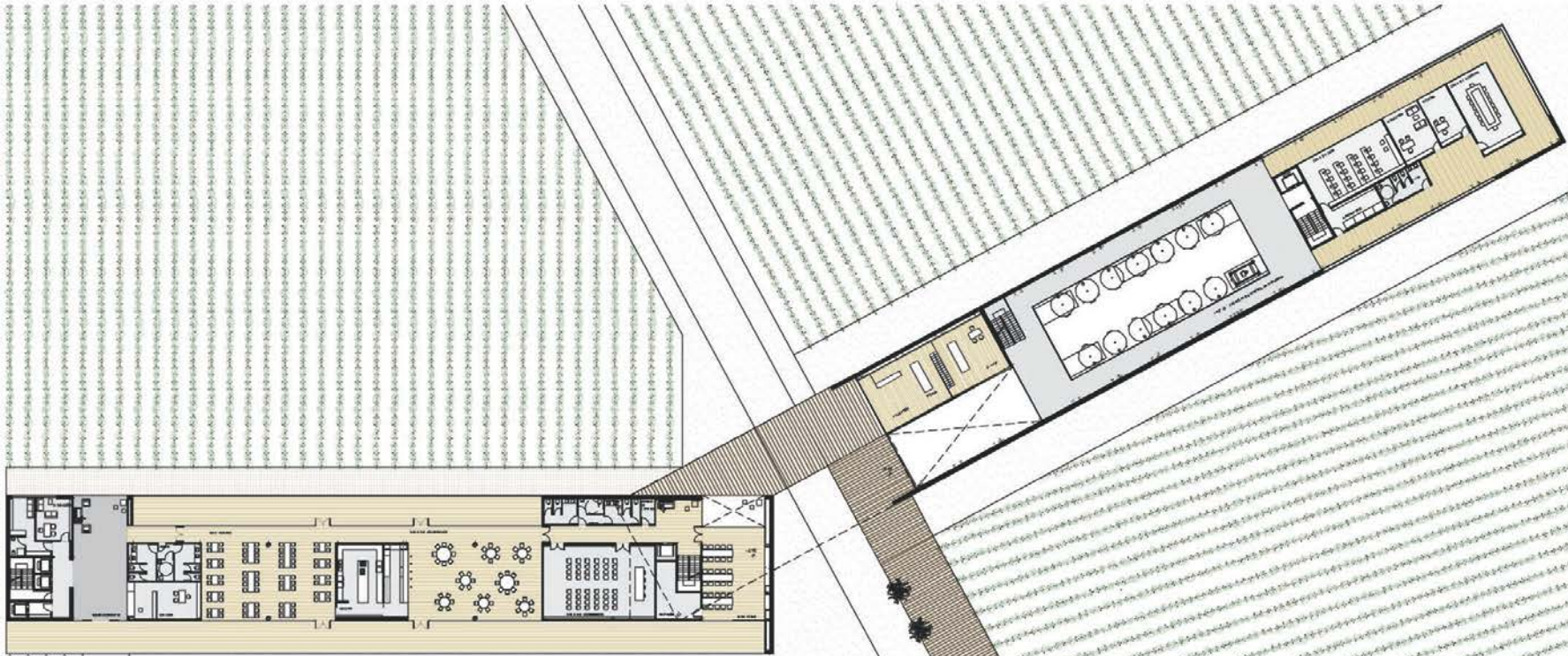






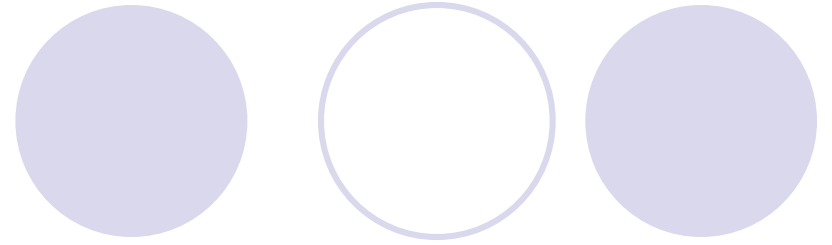
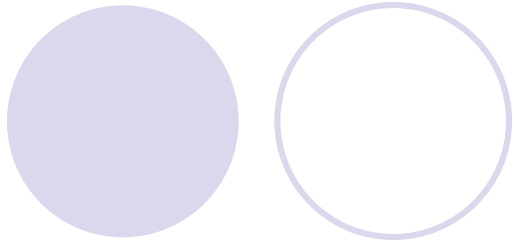






Architectural floor plan showing a long, narrow building with a central corridor and various rooms. The plan includes a kitchen area, a dining area with circular tables, and several smaller rooms. The building is situated on a sloped terrain, with a road and a parking area visible to the left.







St. Omer

