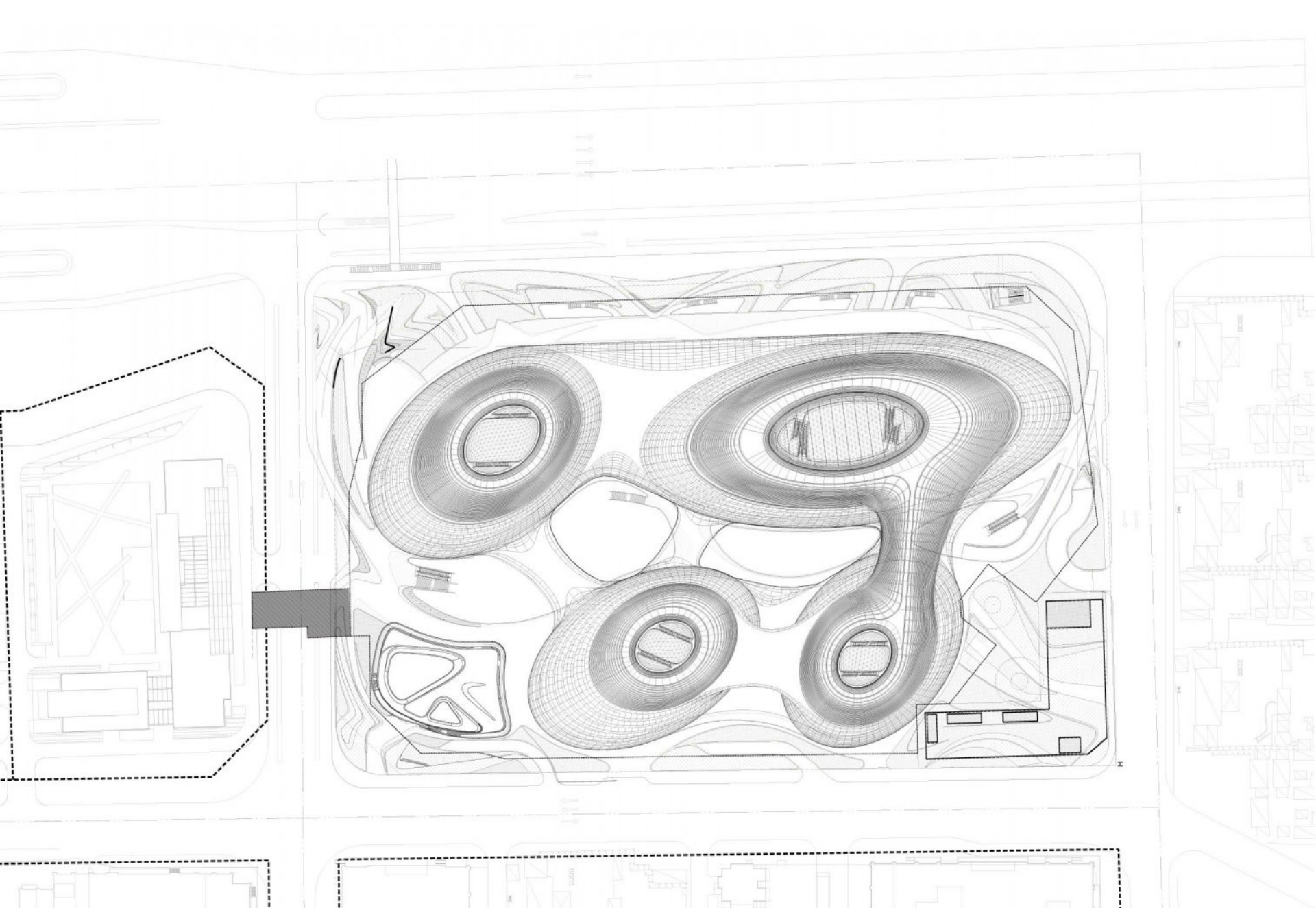


BIOMORFNE I EKO-FORME



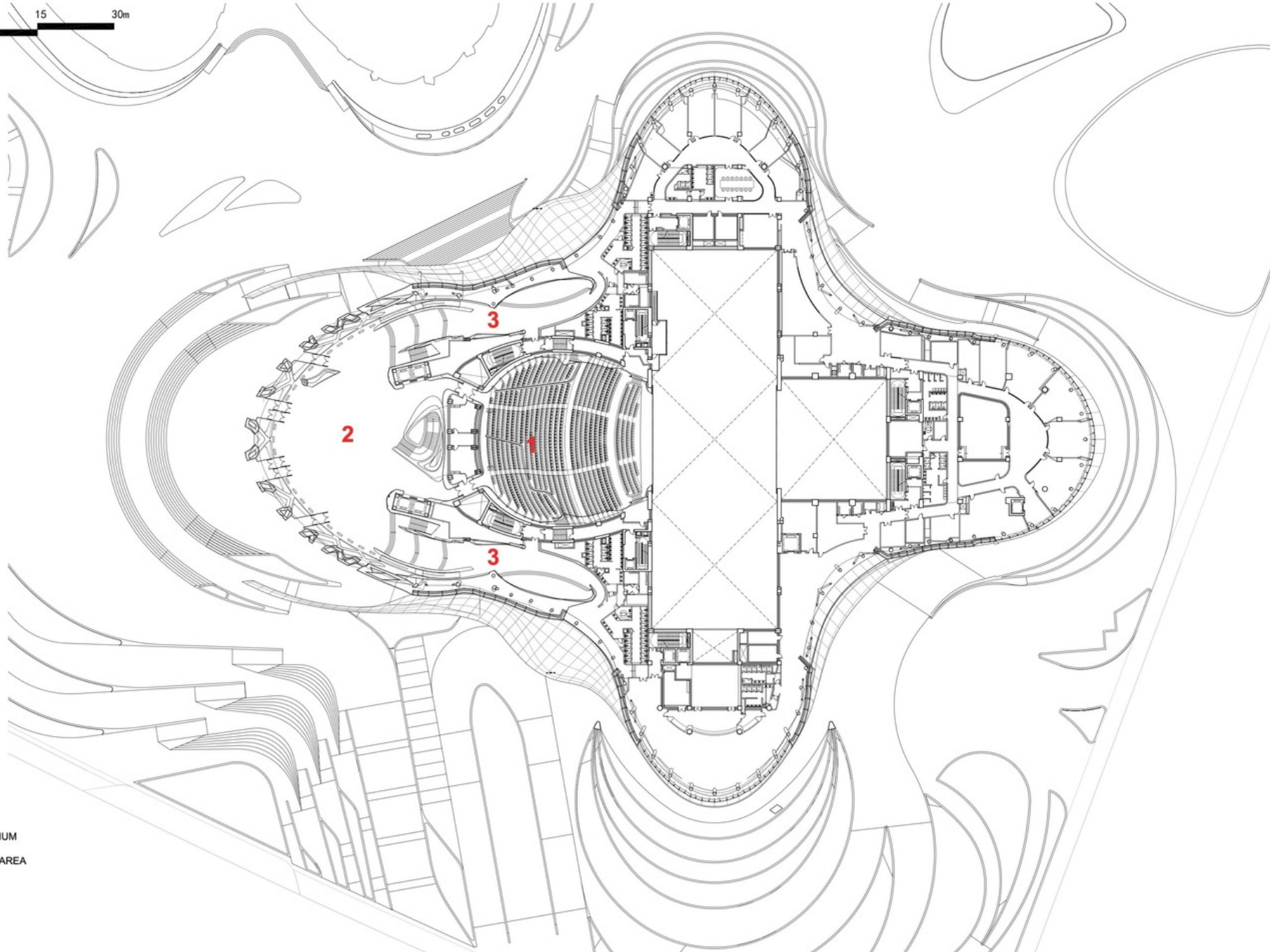
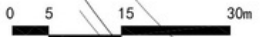


Changsha Meixihu International Culture and Art Centre Zaha Hadid Architects, CHANGSHA SHI, CHINA, 2019

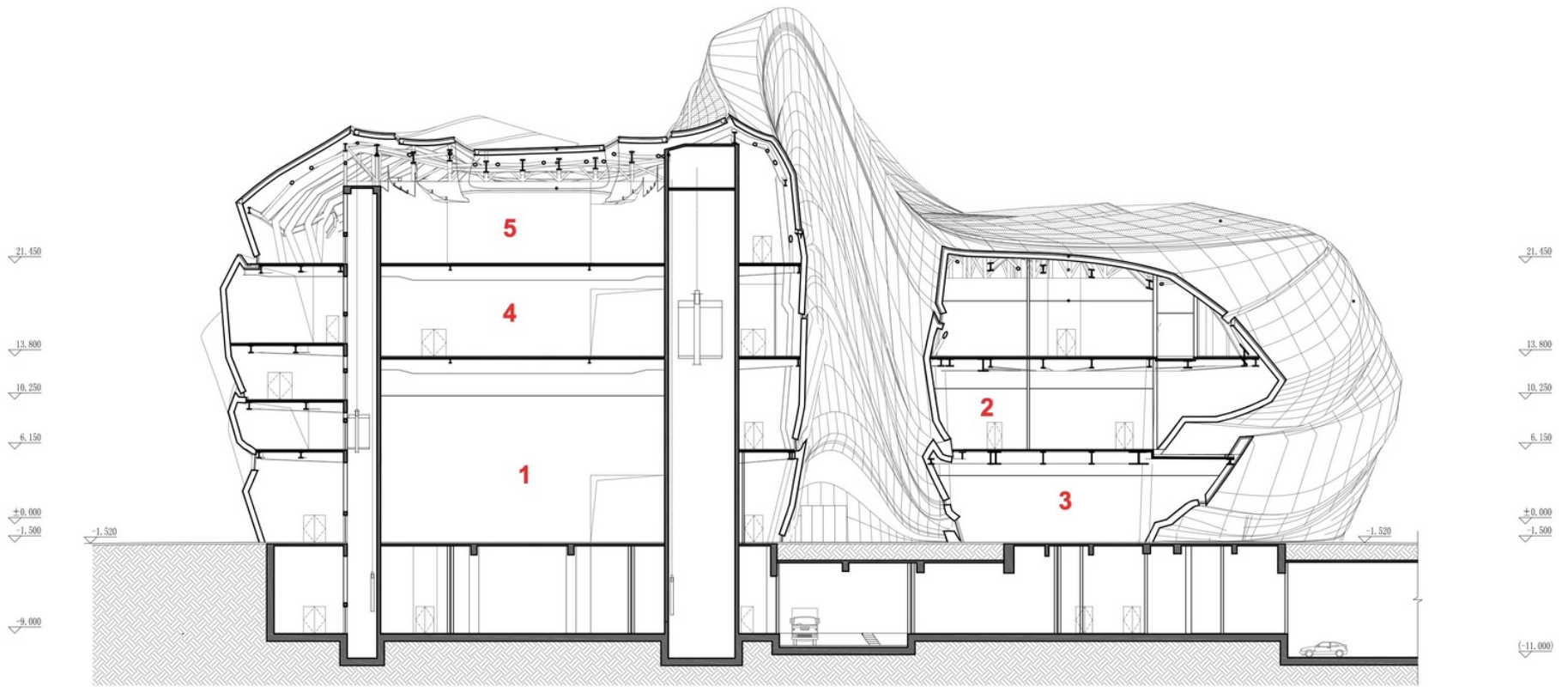




CHANGSHA MEIXIHU INTERNATIONAL CULTURE & ART CENTER - GRAND THEATRE 2F PLAN



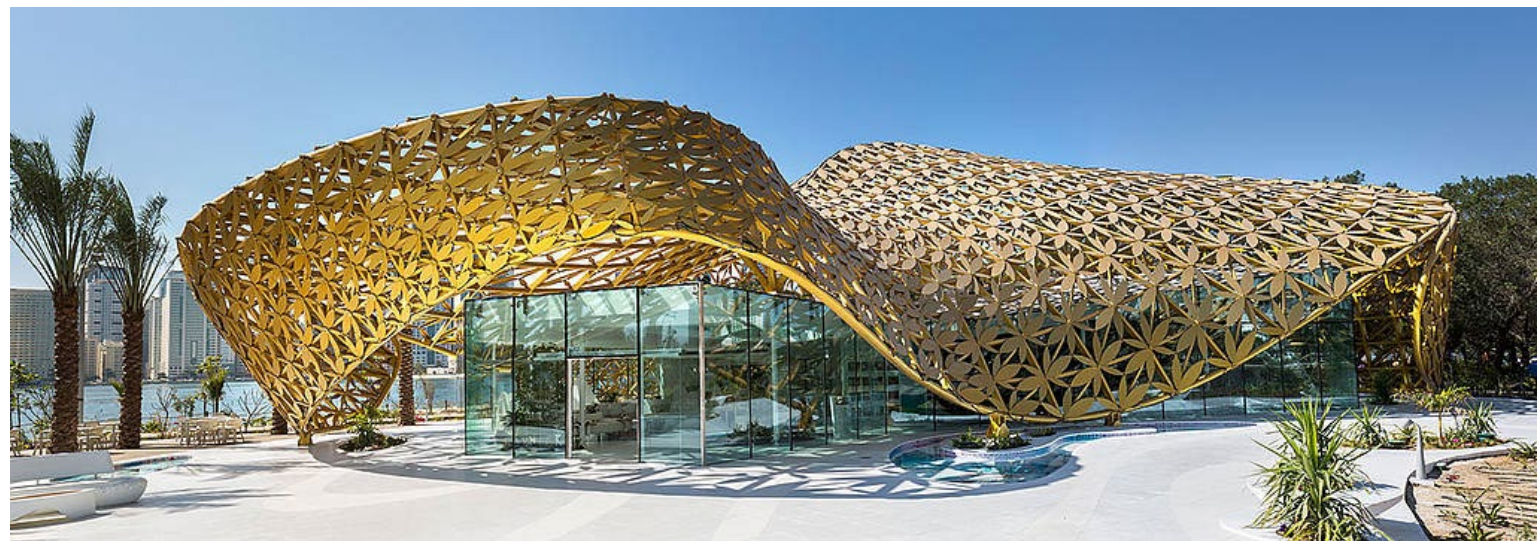
- 1. AUDITORIUM
- 2. FOYER
- 3. WAITING AREA



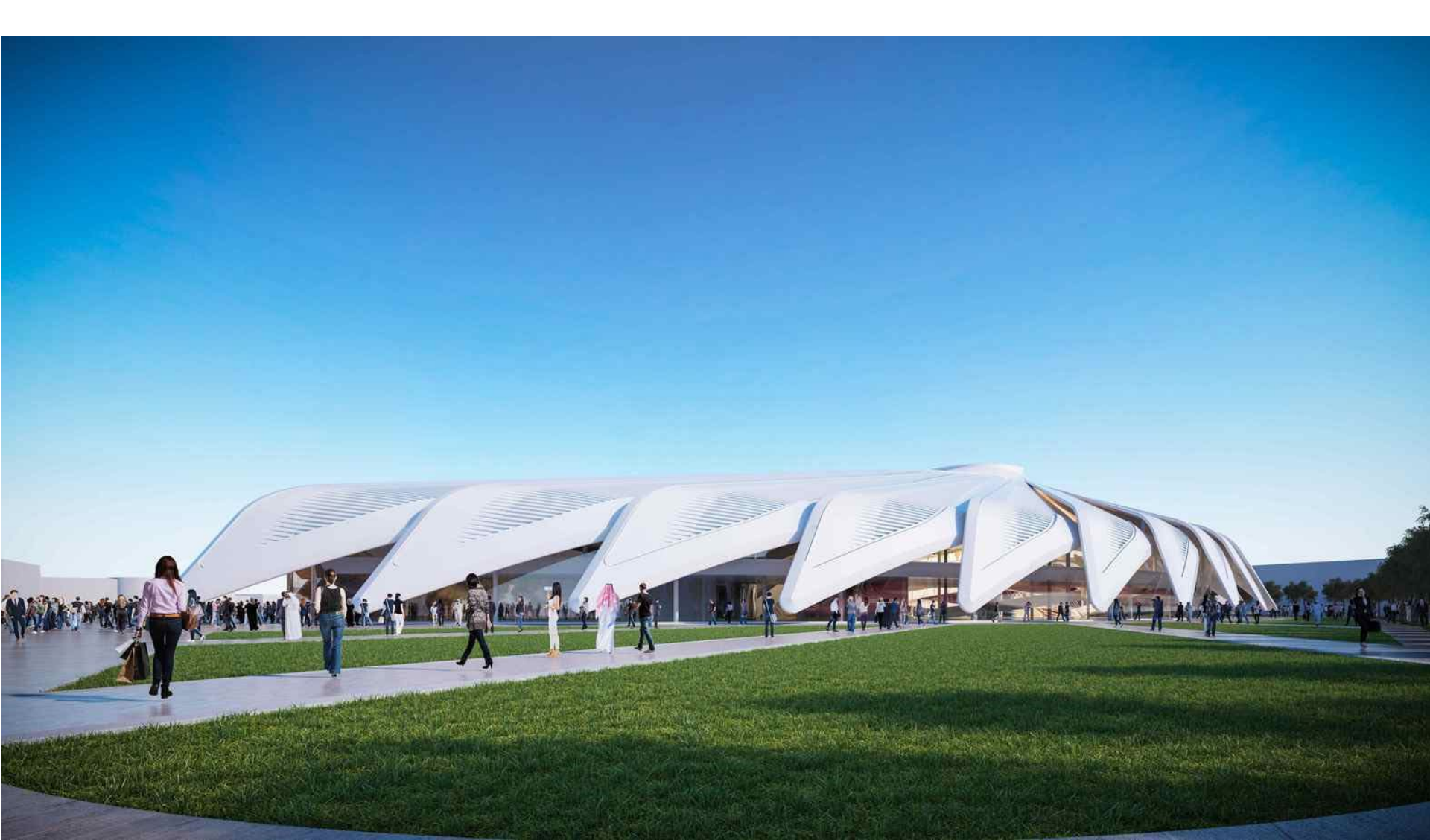
- 1. BIG BOX SPACE
- 2. CLASS ROOM
- 3. CAFE
- 4. INTERNATIONAL EXHIBITION SPACE
- 5. PERMANENT COLLECTION













Studio Libeskin, Milano, Vanke Pavilion, Expo 2015



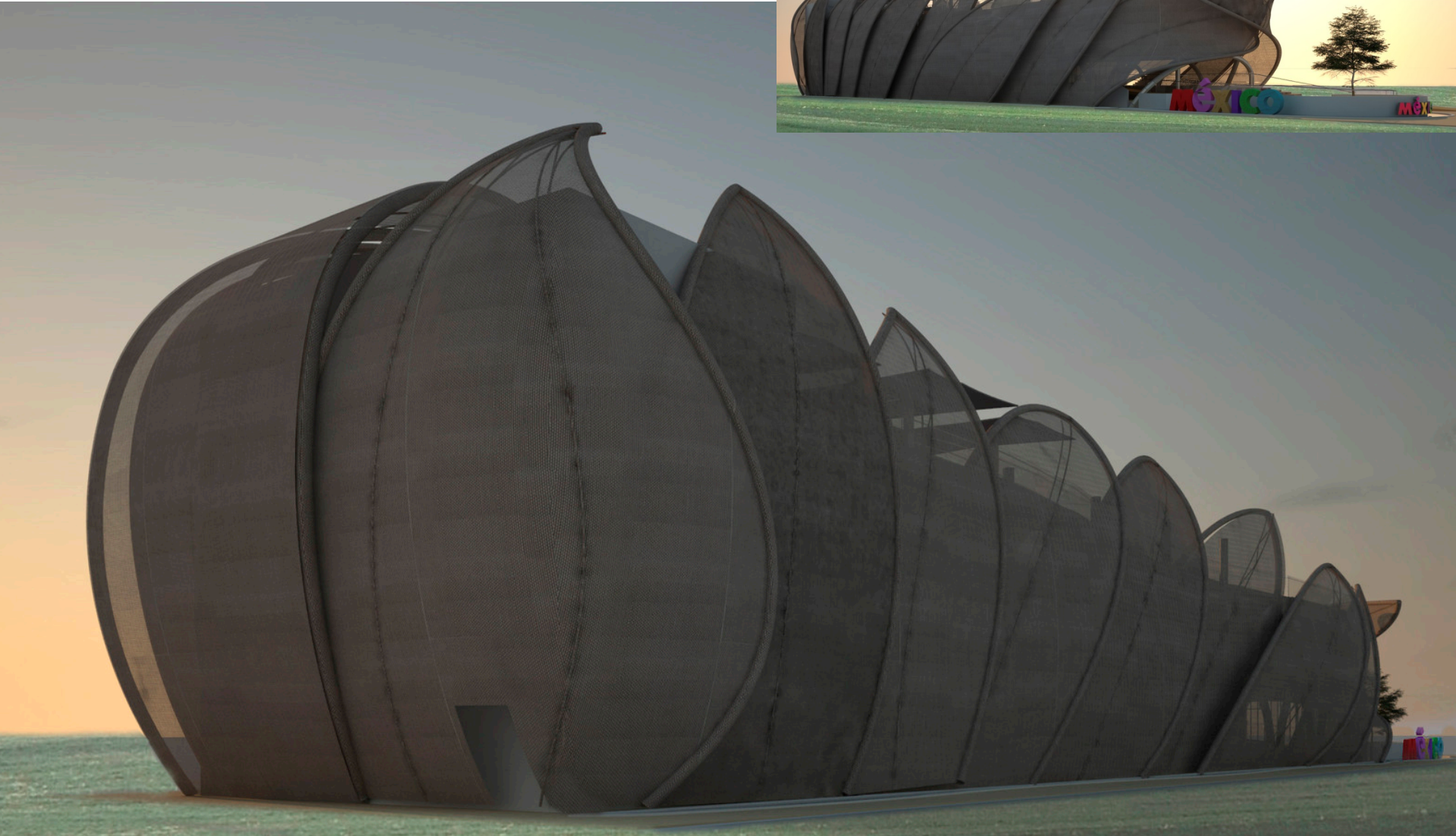
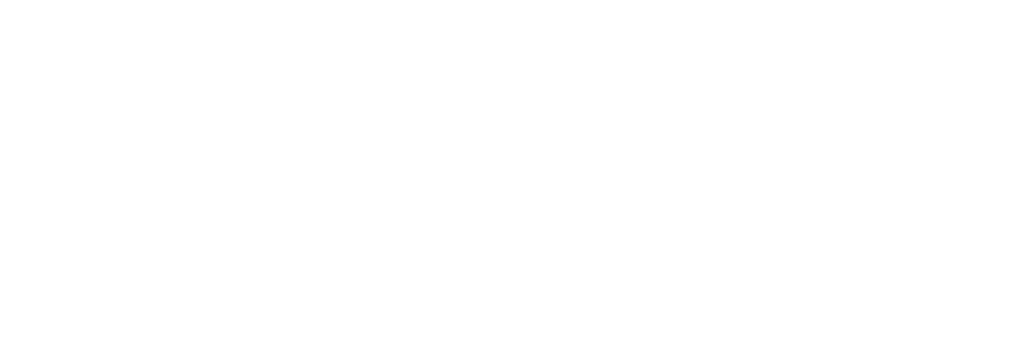


Vanke Pavilion

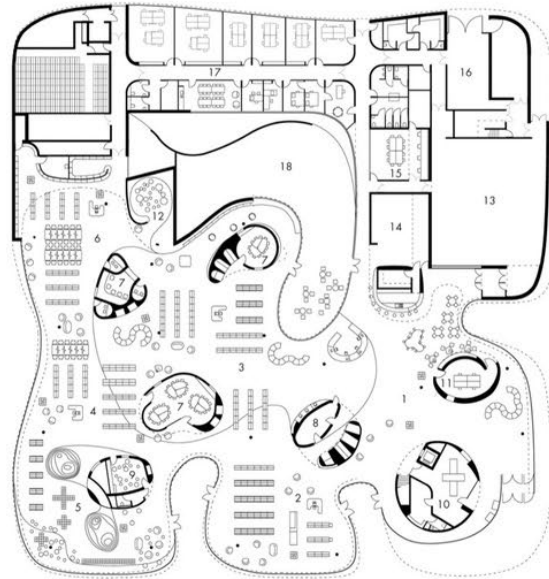


MILWAUKEE ART MUSEUM, QUADRACCI PAVILION





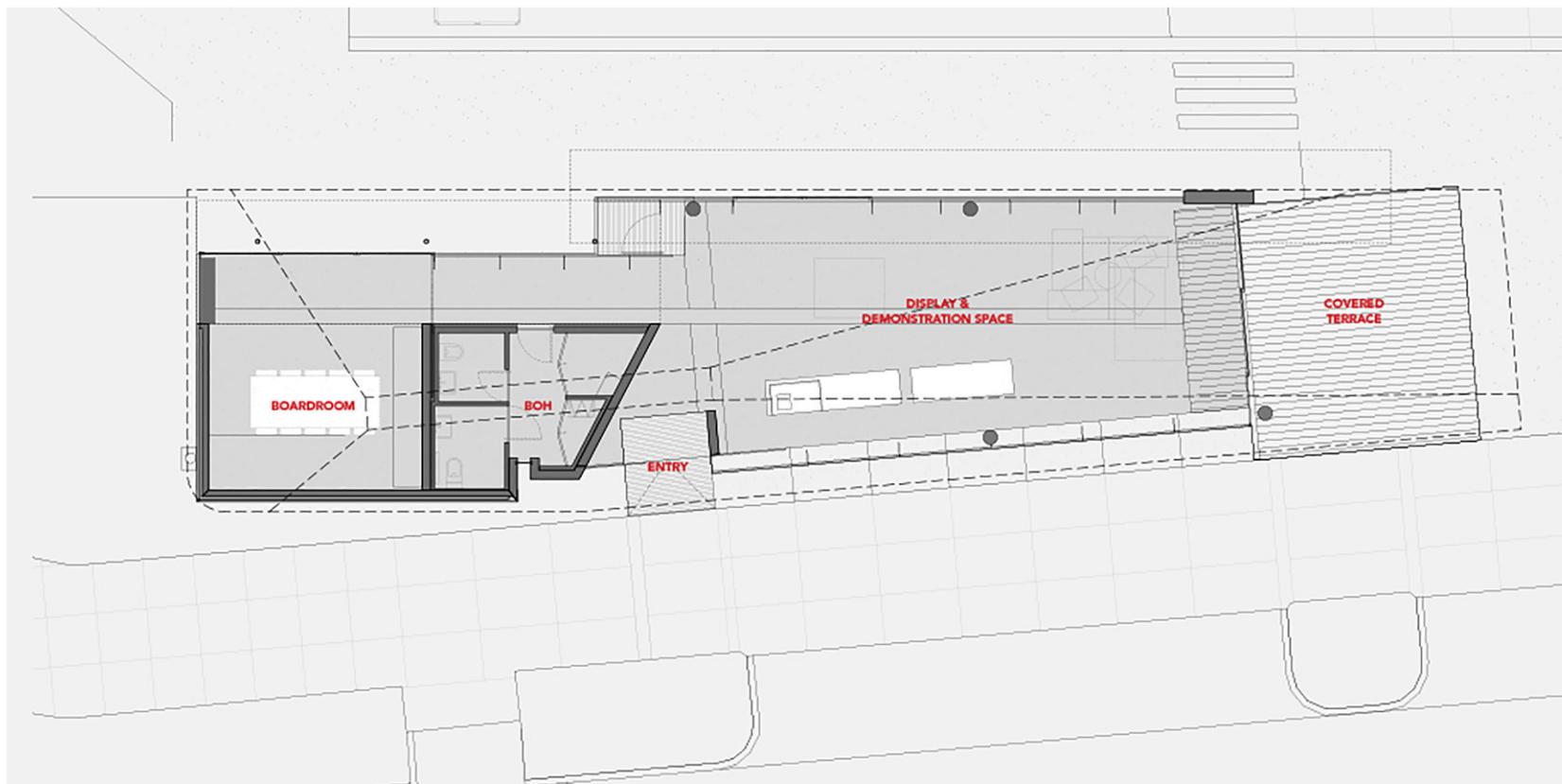




'third place' media library in thionville

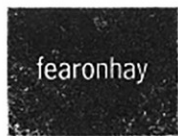
Te Kaitaka - The Cloak / Fearon Hay Architects, Auckland, [New Zealand](#), 2014





FLOOR PLAN

0m 1m 5m





Atlas Hotel Hoian VTN Architects, TP. HỘI AN, VIETNAM, 2016





House for Trees VTN Architects,TAN BINH DISTRICT, VIETNAM, 2014

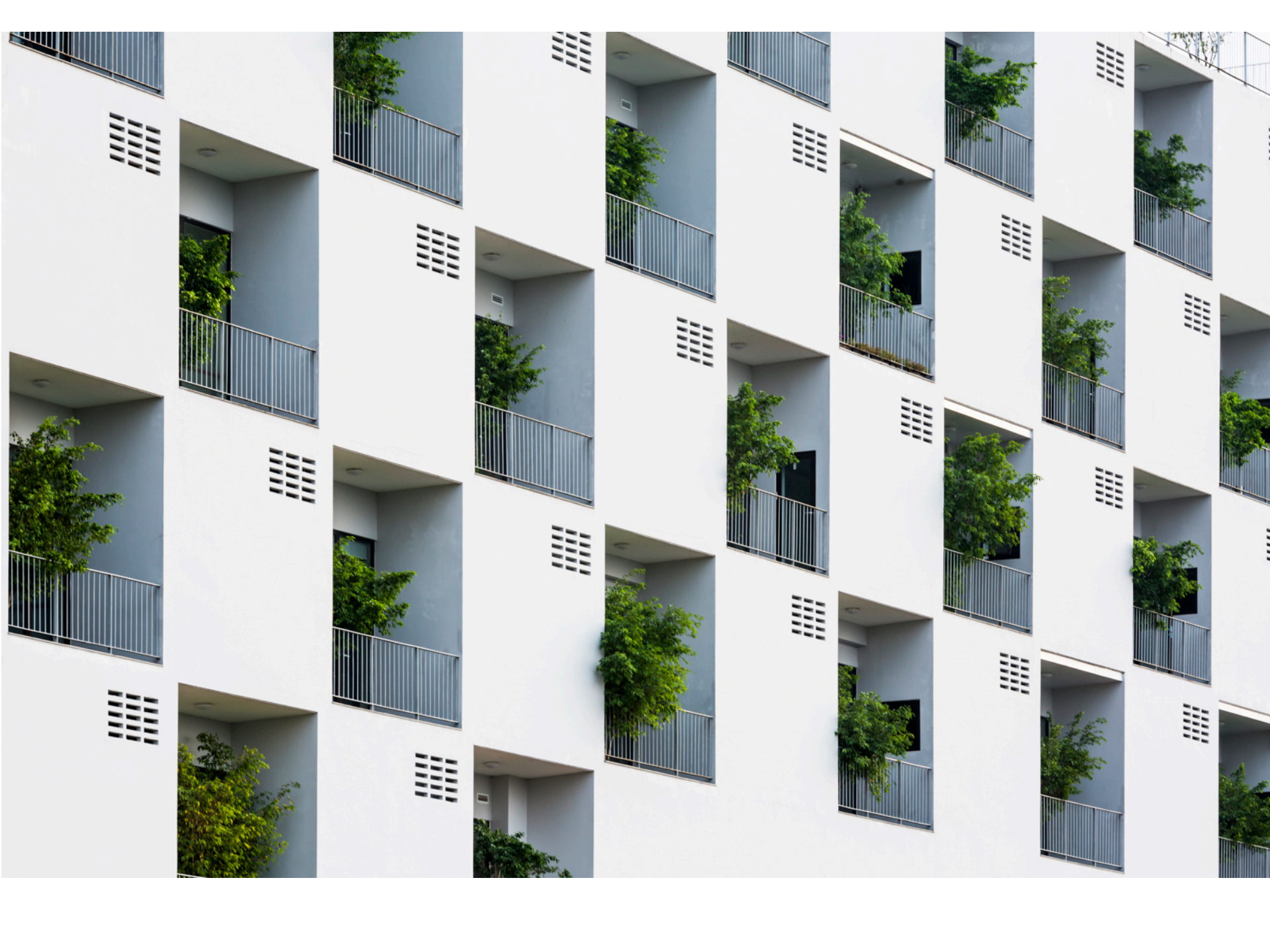




◀ to street





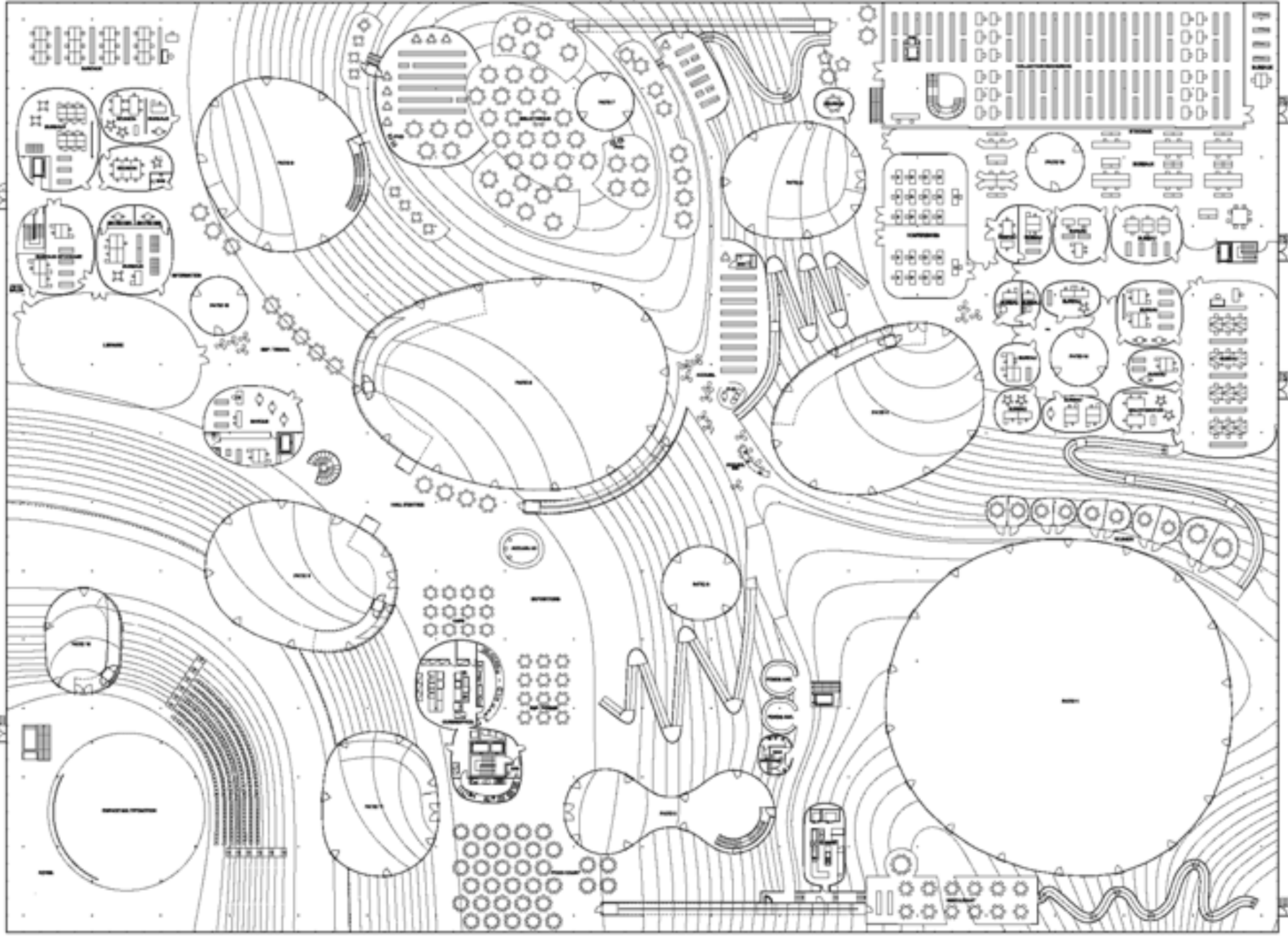




FLUIDNE I KINETIČKE FORME

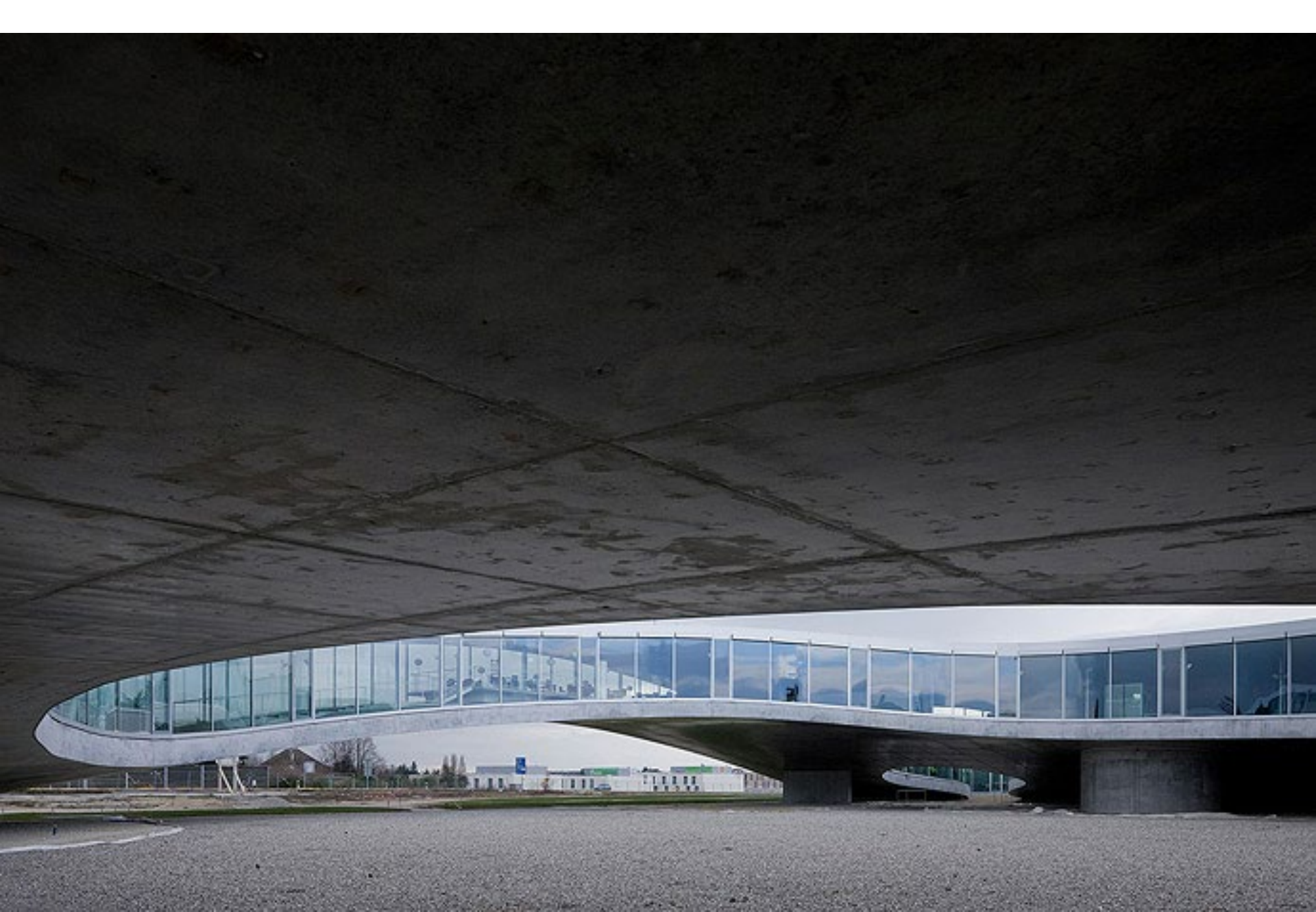
**Rolex Learning Center / SANAA, at the Ecole Polytechnique
Fédérale de Lausanne in [Switzerland](#), 2010.**





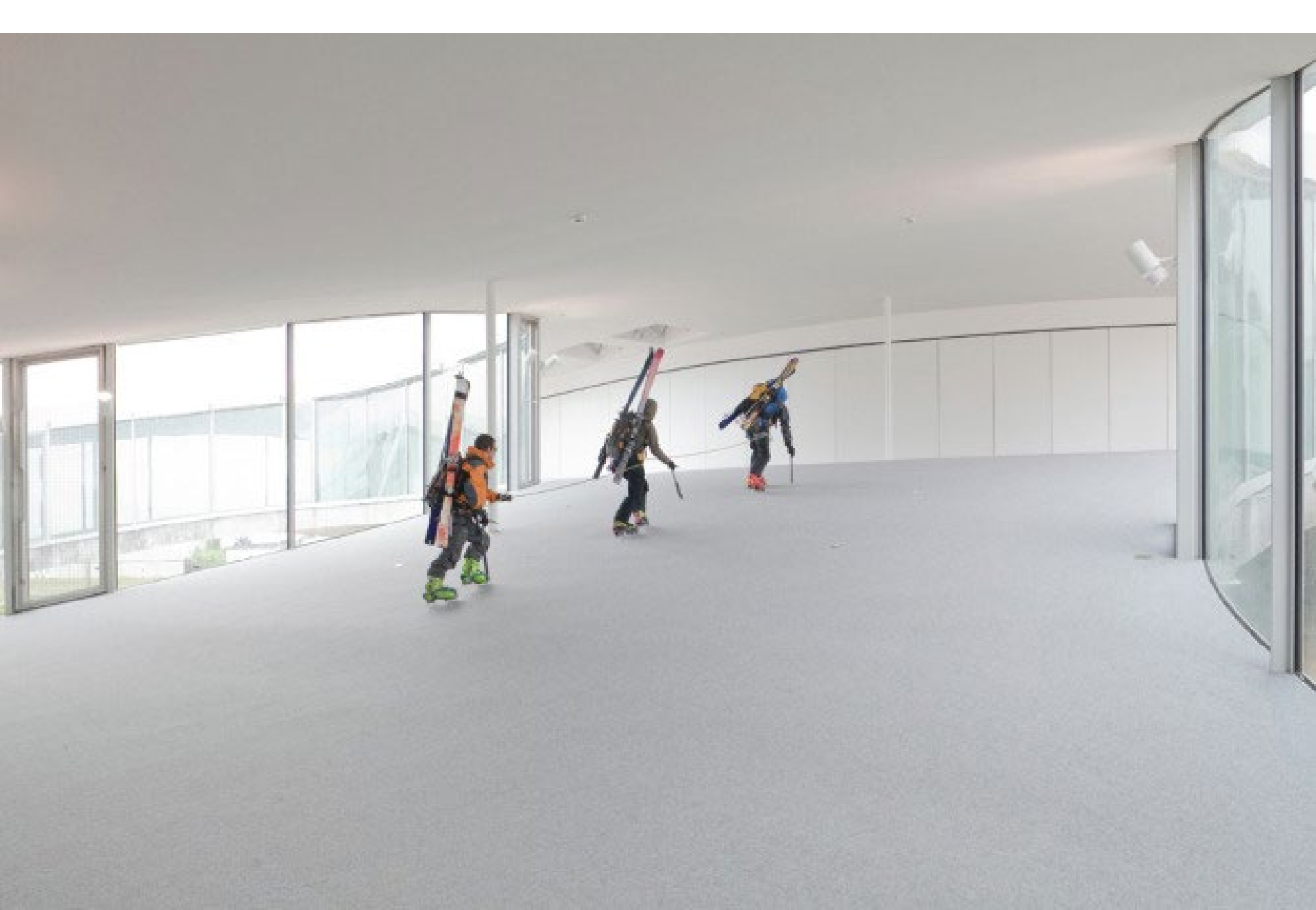




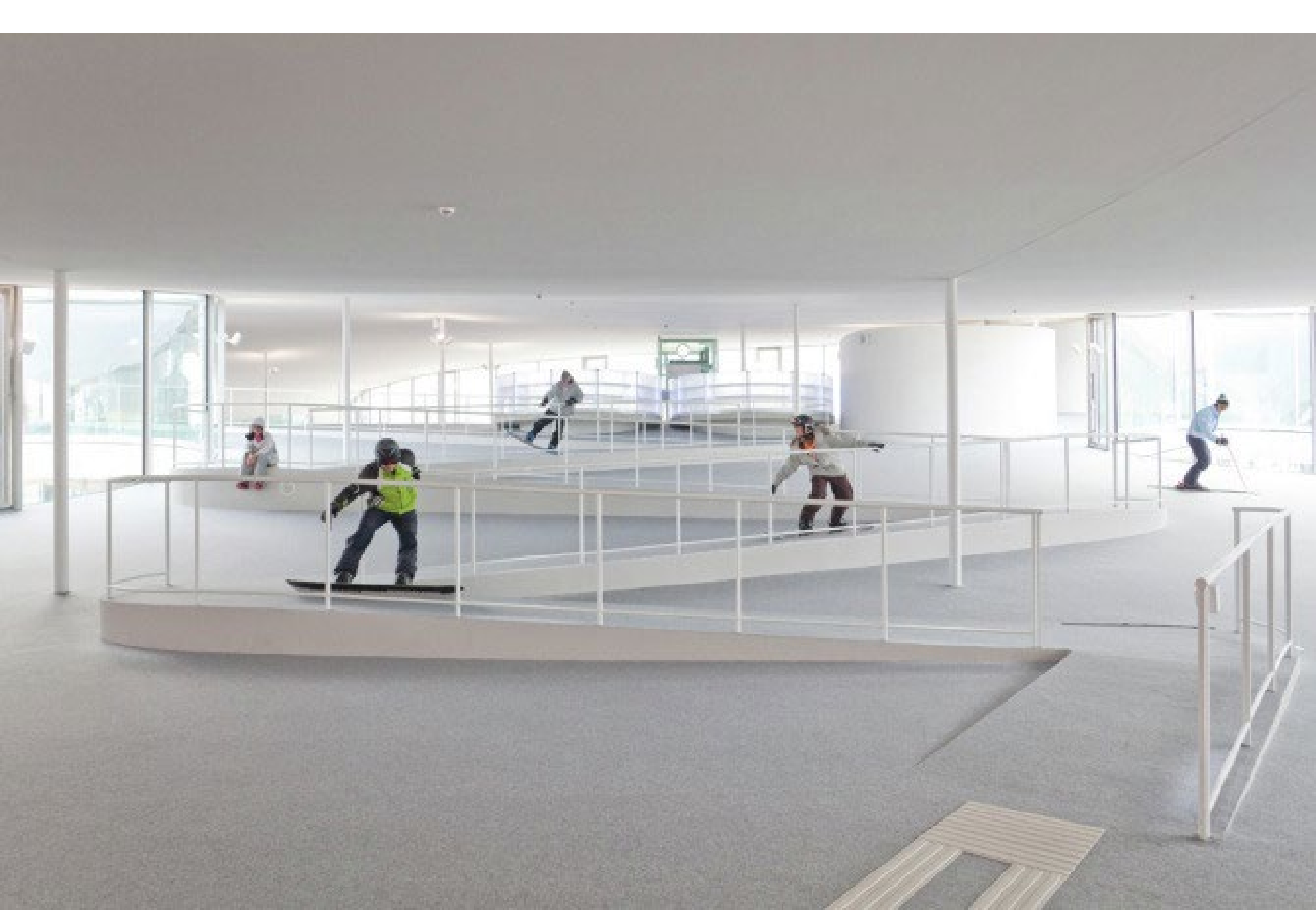




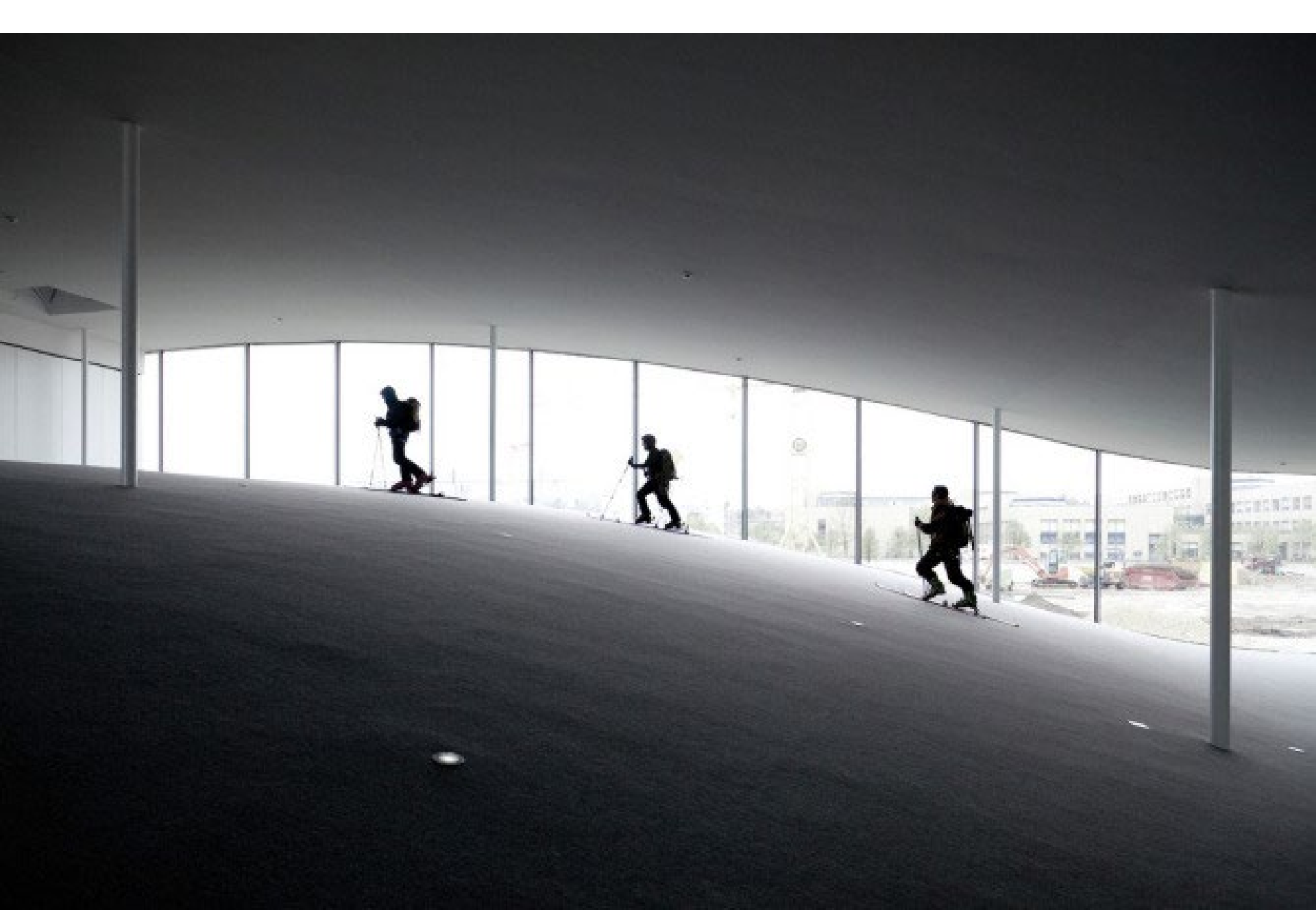










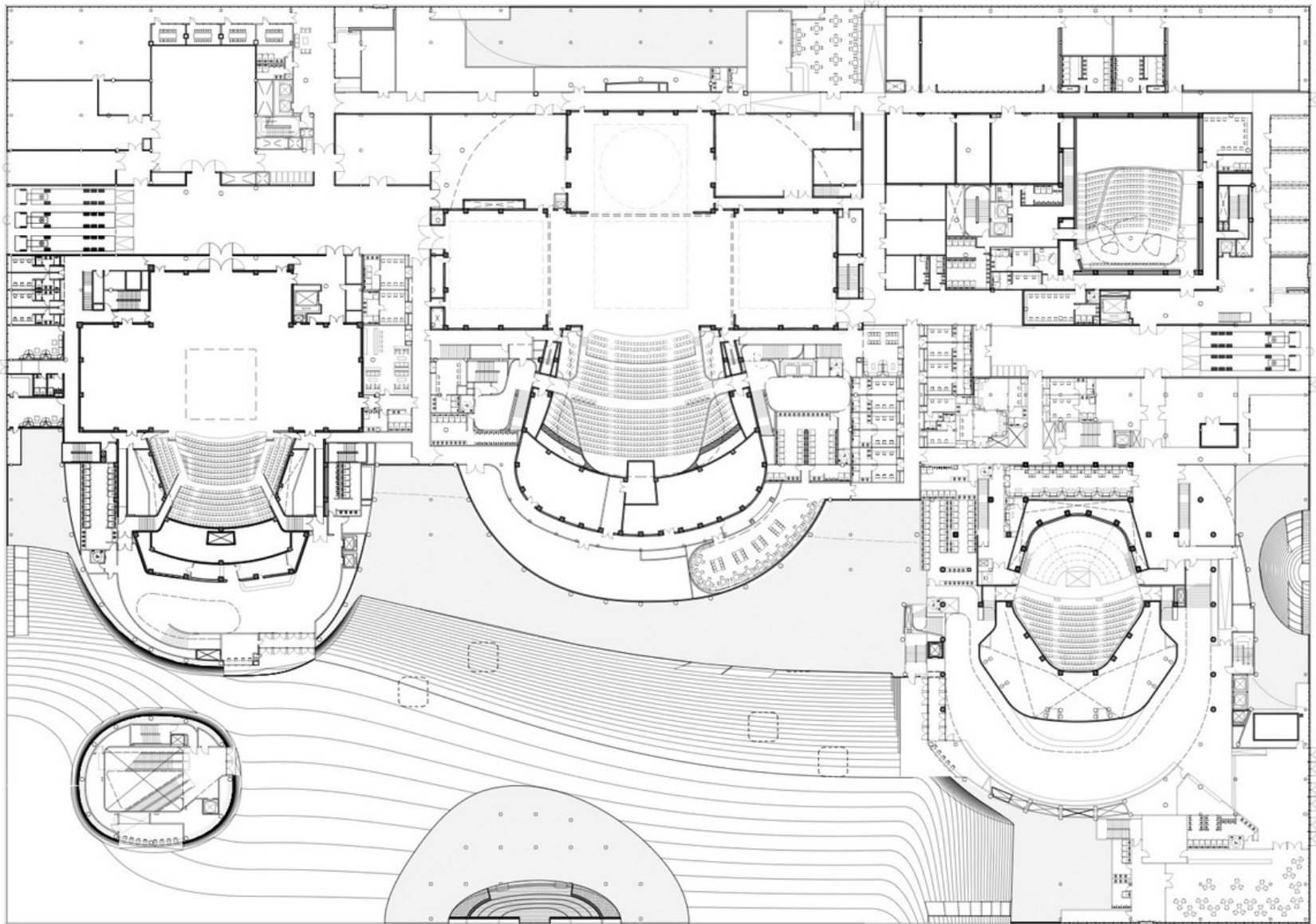




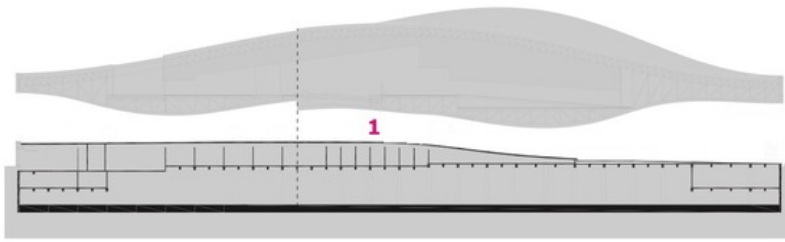
National Kaohsiung Center for the Arts- Mecanoo, Kaohsiung City Taiwan 2018



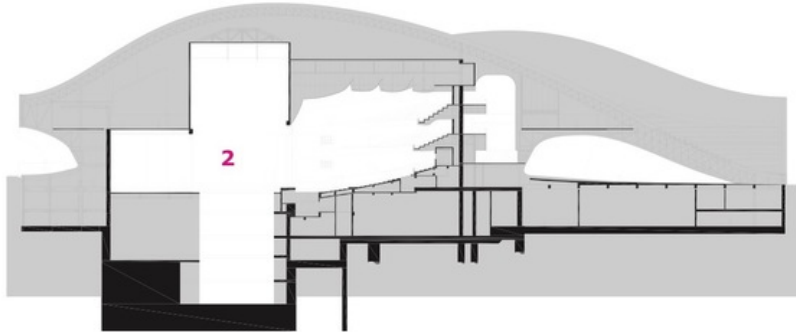




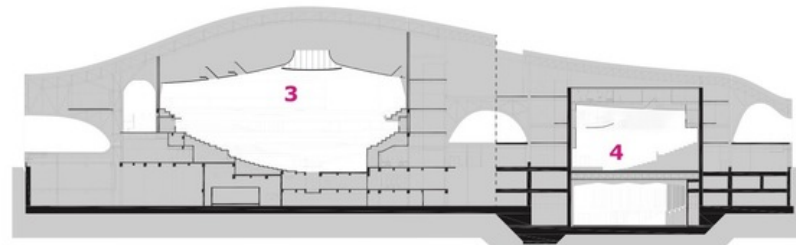
The floor plan shows the structure of the building: an open public space arranged around six bubbles' and an open air amphitheatre. The four performance halls are accompanied by foyers, entrances and service access points.



The Banyan Plaza [1]

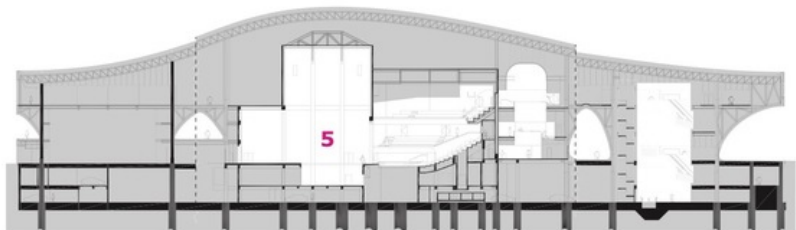


The Lyric Theatre [2] (2250 seats) has vast fly wings above, backstage storage behind the stage and a vast underground technical storage facility.



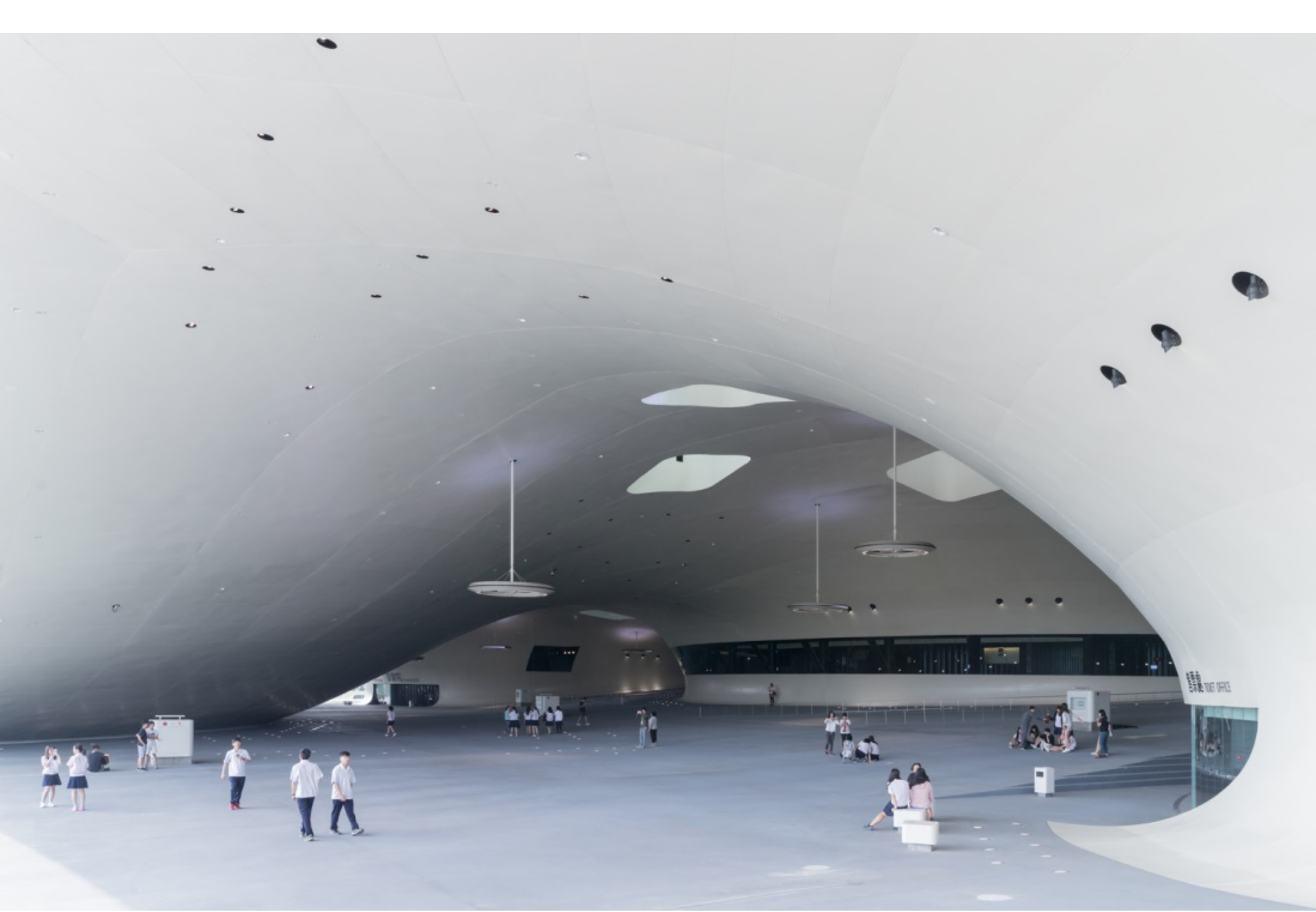
The Concert Hall [3] (2000 seats) is a performance space 'in the round'. In this space the largest double organ in Asia will be assembled.

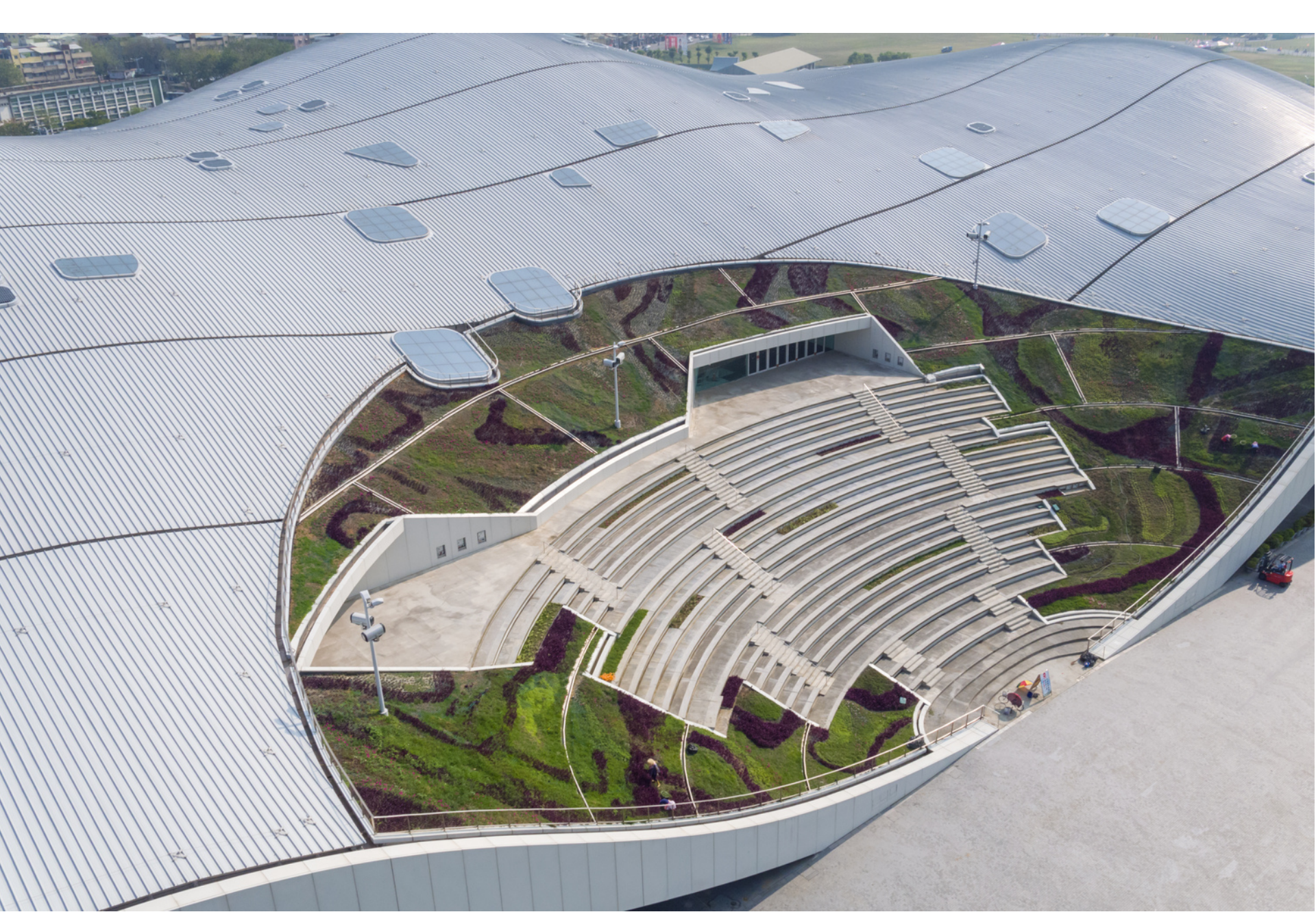
The Recital Hall [4] (470 seats) with its asymmetrical layout.



The Playhouse [5] (1250 seats) is the most flexible performance venue, designed for a wide variety of drama and dance events.







Exhibition Center of Xiake Pure Island Pure Life/ SHUISHI,WUXI, CHINA, 2020



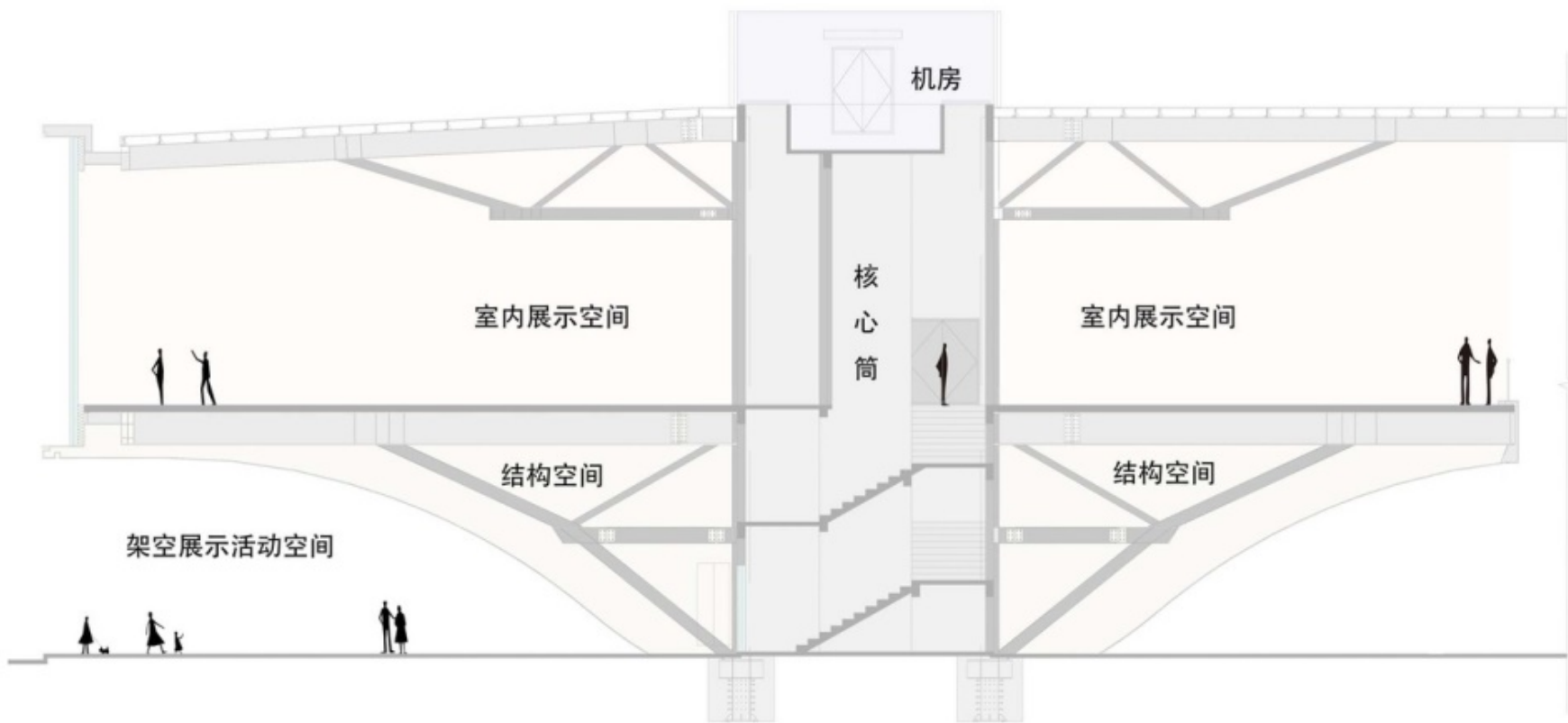






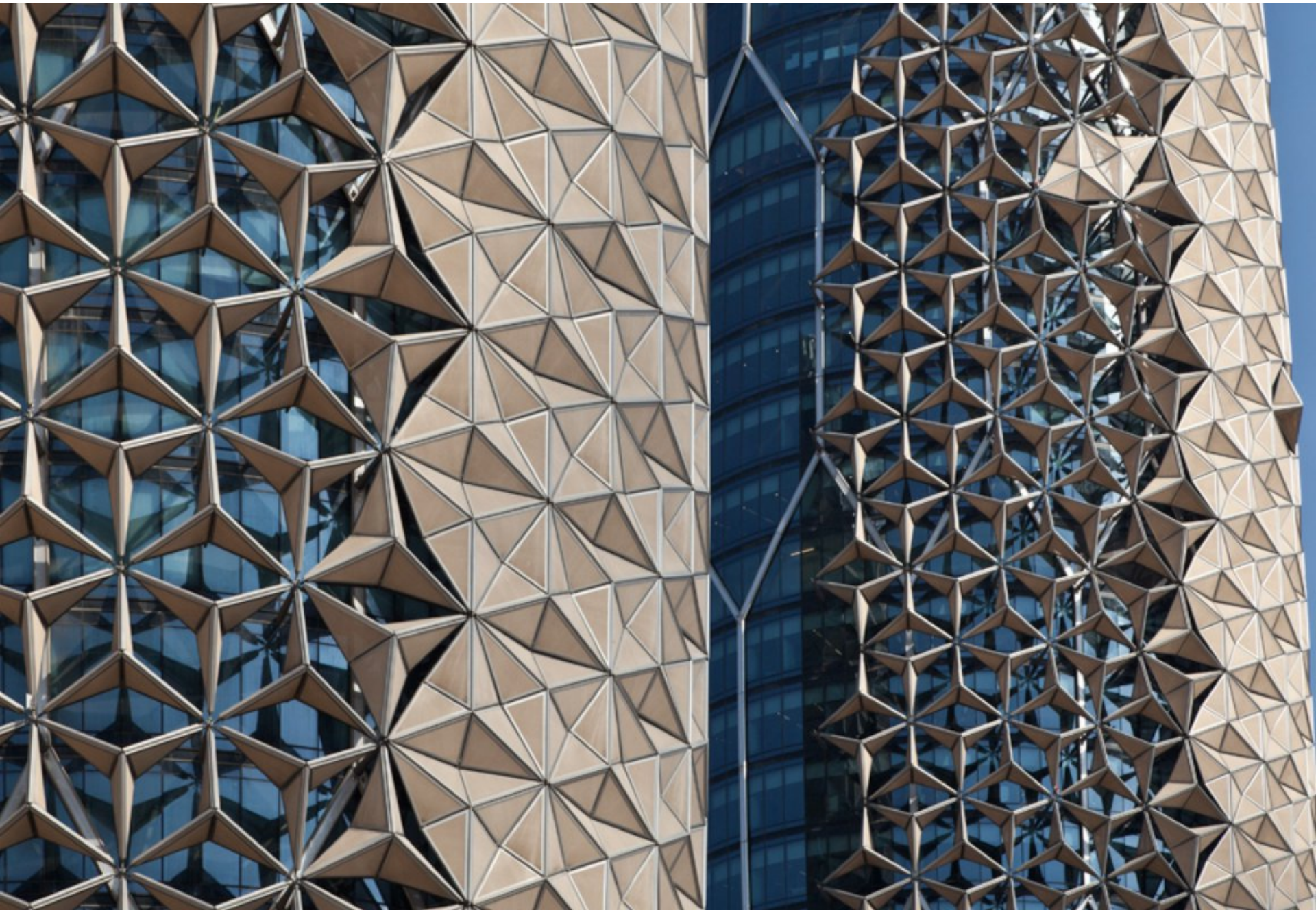






Al Bahar Towers/ Aedas Architects, Abu Dhabi, UAE



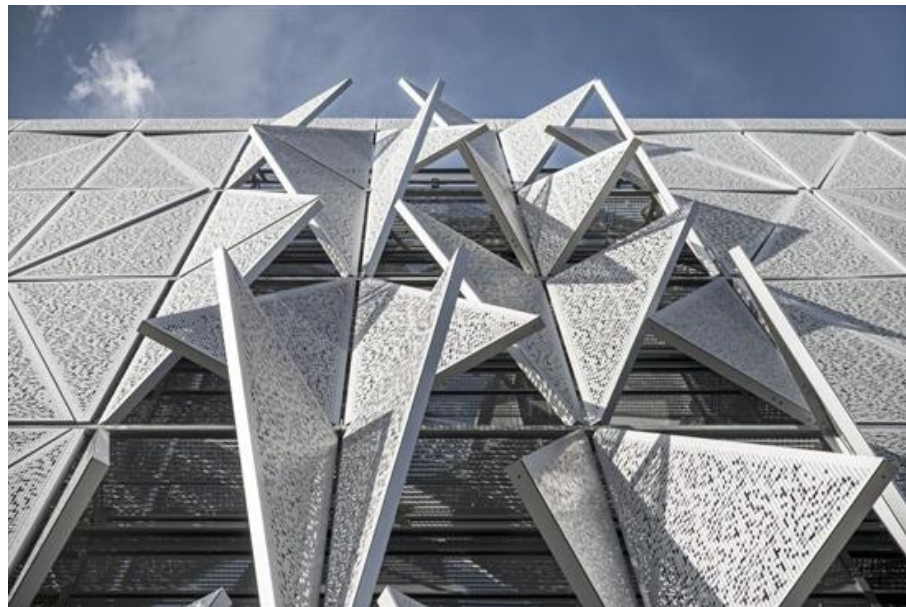




One Ocean Thematic Pavilion, Yeosu, South Korea, 2012



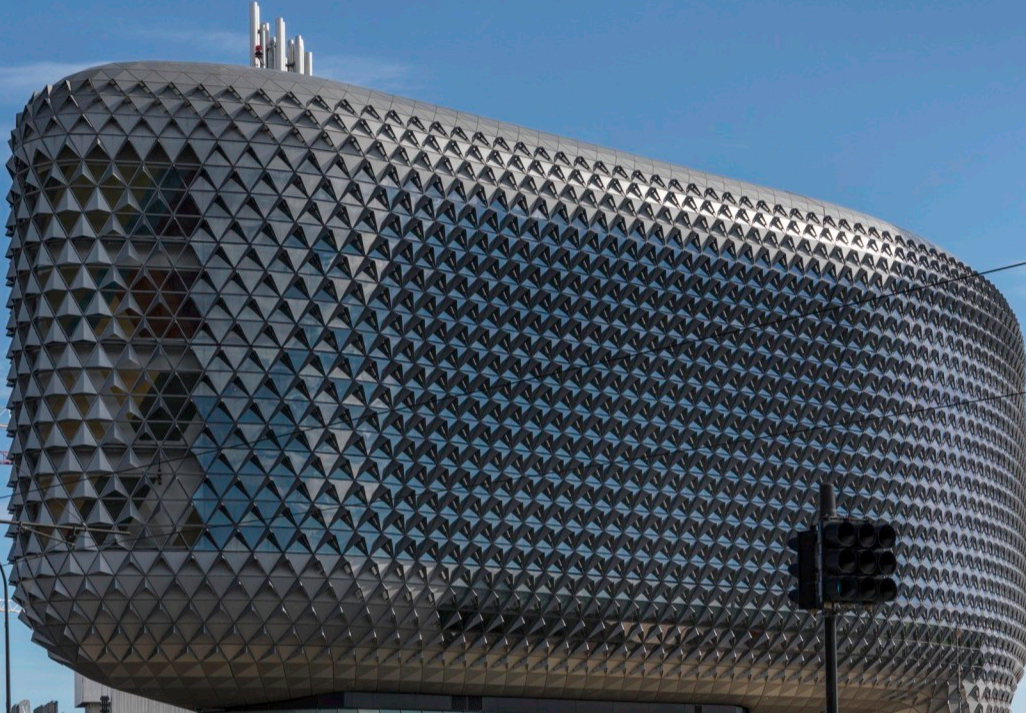
Kolding Campus, University of South Denmark



**Kiefer technic showroom, „Harald Kiefer Metallbau GmbH“/
Ernst Giselbrecht, Bad Gleichenberg, Austria, 2007**







KEEP LEFT

LANE

